

## Aspen Quick Start

Version 1.0 NPD 2nd October 2015

Edited EPN 17 Nov 2015

### Overview

These instructions cover installation of an Aspen workflow system comprising four RIPs to drive a single-head Aspen unit. In this respect the instructions are theoretical. Currently we support between 1 and 3 RIPs on a single computer driving a single Aspen print engine. While this document covers up to 4 RIPs driving a single print engine, we do not currently have installations with any more than 3 RIPs driving a single print engine.

They cover:

- Installation of a single-RIP system.
- Duplicating to four RIPs using Multi-RIP Utility.
- Configuring the Navigator workflows.

Steps you need to take are preceded by a checkbox, to allow you to print out this document and check them off as you proceed.

The procedure should take one to two hours.

### Preparation

These instructions assume that there is no existing Xitron Workflow installation.

Either for LDK security you will need:

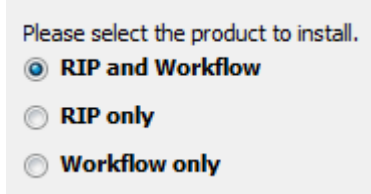
- An LDK Product Key to enable Navigator.
- Passwords for HDS, HVD and Color Pro.
- A Xitron Navigator Workflow dongle.
- A password to enable the Aspen printer plugin against the Workflow dongle.

Or for HLS security you will need:

- A Xitron Navigator RIP dongle.
- Passwords for HDS, HVD and Color Pro.
- A Xitron Navigator Workflow dongle.
- A password to enable the Aspen printer plugin against the Workflow dongle.

### 1. Installation

- ☐ Start the installer (NavigatorInstaller.exe).
- ☐ Accept the License Agreement.
- ☐ Select RIP and Workflow.






## Aspen Quick Start

- ☐ Enter the Printer, HDS, ColorPro and HVD passwords when prompted.
- ☐ Enter the LDK key when prompted.
- ☐ On the Destination Folder dialog, select the installation location. It is recommended that you use a unique folder name.
- ☐ On the Select Program Folder dialog, enter the name for the folder which the installer will make in the Start menu.
- ☐ Wait for the installation to finish.


## 2. Configuration

- ☐ If you are using LDK security, select 'Convert to LDK' from the Start→Navigator menu. This only needs to be done before the first run.

### 2.1 Start the workflow software

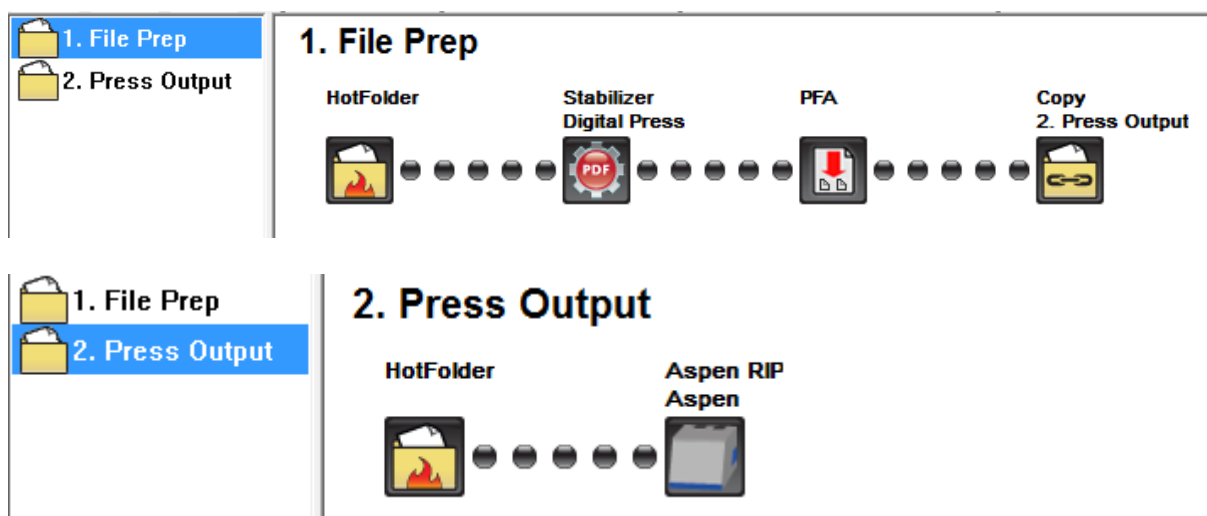
- ☐ Start the Navigator Server: Start→Navigator→Navigator Server, . The Navigator RIP,  will also run, and this in turn will launch Durango Spooler, .

- ☐ Allow ten seconds for the Server to settle; then start the Navigator Client:

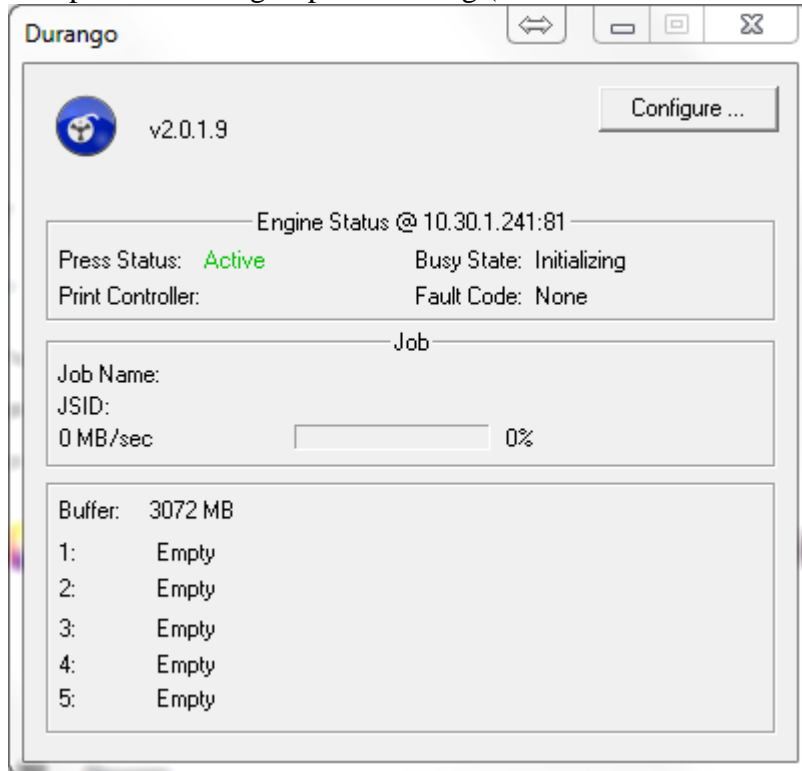
Start→Navigator→Navigator, .

- ☐ In the Navigator Client, log into the Server as user 'Administrator', with no password. (You can assign one if needed).

The Navigator Client window will show two pre-configured workflows, File Prep and Press Output.



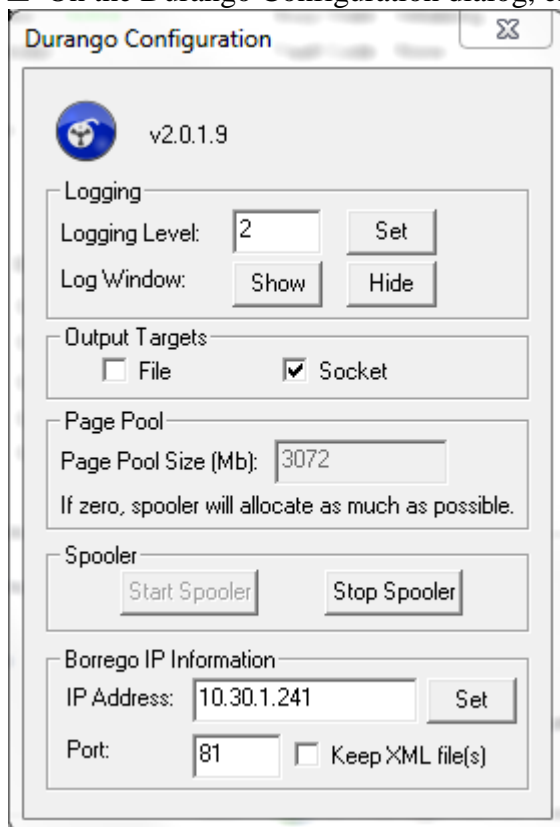
- Open the Durango Spooler dialog (click its icon on the Taskbar):



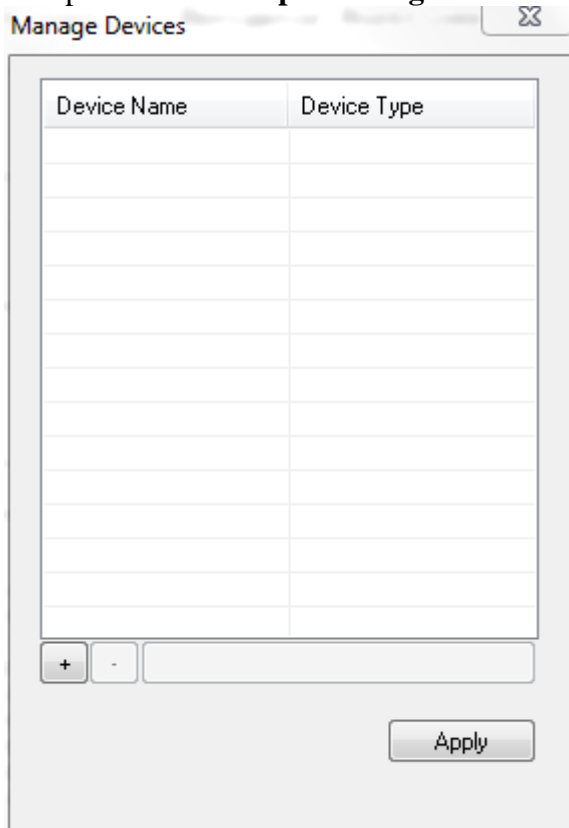
- Choose Configure... and select 'Yes' on the confirmation dialog.

## 2.2 Configure the printer network address

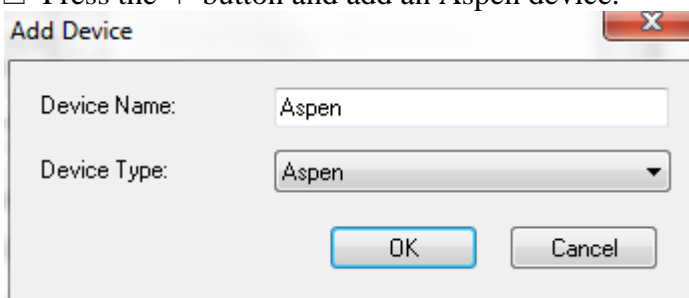
- On the Durango Configuration dialog, ensure that 'Socket' is the selected Output Target.



- ☐ Press the 'Stop Spooler' button if it is available. Enter the IP address and port number of the Borrego, and press 'Set'. Then 'Start Spooler'. Close the Durango Configuration window, and leave Durango running (if you minimize it, it will not be shown in the Taskbar and can be found in the System Tray).
- ☐ **Log into Navigator Server**, Server Setup→Administrator Login... User Name 'Administrator' with no password (you can configure one).
- ☐ Open **Server Setup→Manage Devices...**,



- ☐ Press the '+' button and add an Aspen device.



- ☐ Configure for Press Head Count=1, RIPs per head=4 (so a total of four RIPs) for example.
- ☐ If the Press Head Count is more than one, check 'Is a Descanso'.
- ☐ Set the IP Address and Port number to the same values as the Durango configuration above.

## Aspen Quick Start

Device Name	Device Type
Aspen	Aspen

Device Configuration

Device Name: Aspen

IP Address: 10 . 30 . 1 . 241

IP Port: 81

Aspen Configuration

Tickle (MS): 5000 How often we check the status.

Flags

☐ Save XML ☐ Is a Descanso

Thread Control

Thread State: Not Running

☐ Auto Set Press Speed 0 IPS

Max Press Speed: 45 IPS

Press Head Count: 1 Rips Per Head: 4 ☐ Duplex Press

☐ Make sure to press 'Start Thread' and then 'Apply' or the changes will be lost; then close the Manage Devices dialog.

*There is no need to configure the Aspen device in the Navigator RIP, Navigator->Device Manger... as an Aspen device will already be present. Although this has an Address field, this may be left empty.*

### 2.3 Duplicate the one RIP to four

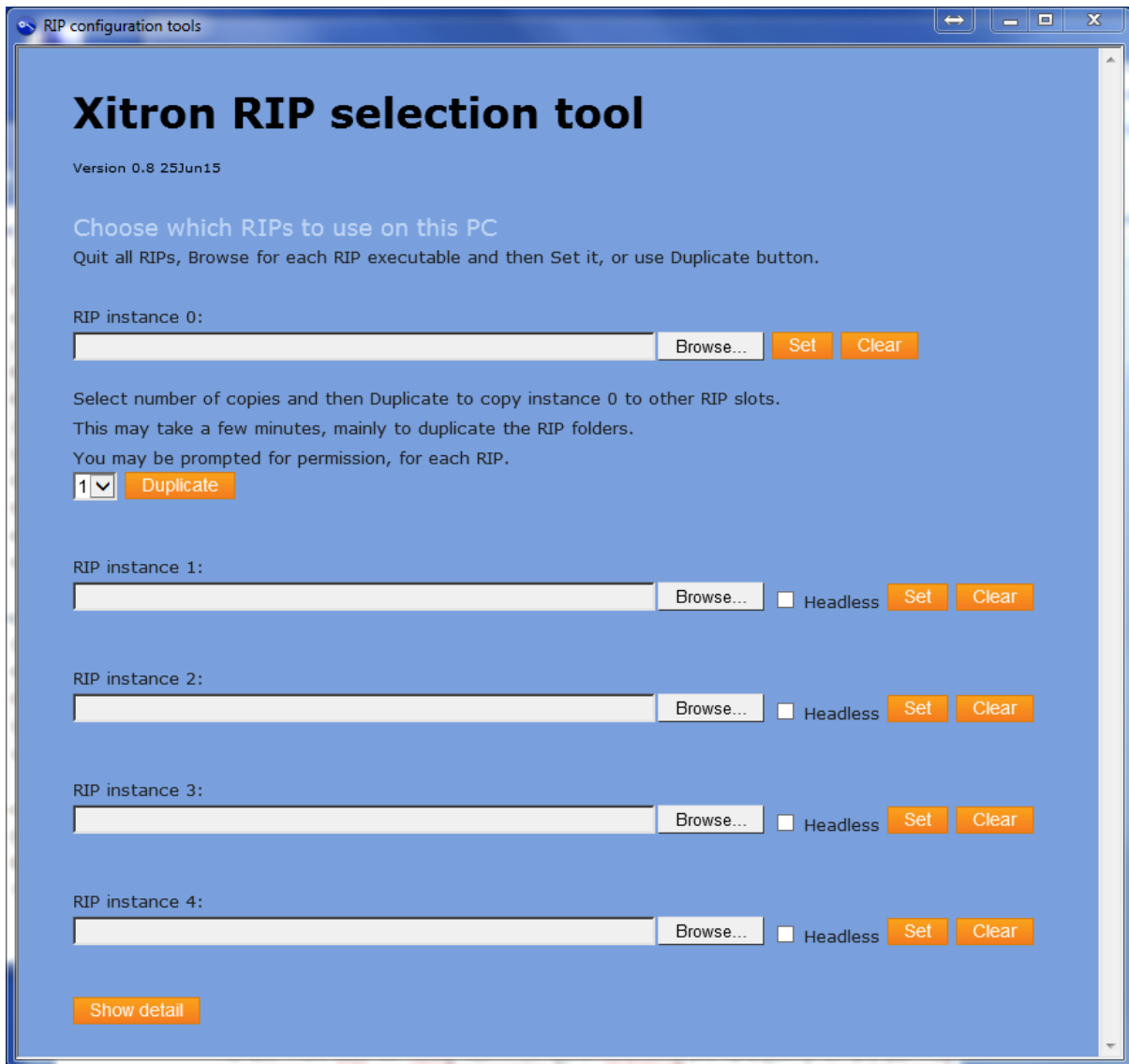
Multiple RIPs on the same PC have unique instance numbers to identify them.

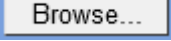

At the moment we have one RIP, set to instance 0. We need to duplicate this to four RIPs, instances 1,2,3,4.

☐ Exit Navigator Server and Client. The Navigator RIP and Durango Spooler should also exit.

☐ Run the **Multi-RIP Utility** from Start→Navigator→Multi-RIP Utility.






- ☐ Press the top  button for RIP instance 0.
- ☐ Browse to your RIP folder, e.g. C:\Navigator\Navigator 10.0r1
- ☐ Select Xitron.exe.
- ☐ Press  for RIP instance 0.
- ☐ Select 4 for four RIPs and press Duplicate.



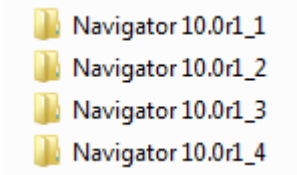
Your RIP instance 0 will be duplicated to instances 1,2,3,4; this will take a few minutes.

*You might see a 'Stop running this script?' warning; if so, select 'No'.*

- ☐ Finally, we need to  RIP instance 0, otherwise it will be started when Navigator Server starts. The RIP itself is not deleted, so you can duplicate from it in future if necessary.
- ☐ When the Clear operation has finished, close the Multi-RIP Utility.

## Aspen Quick Start

In the Navigator folder we now have four new RIP folders named like this:

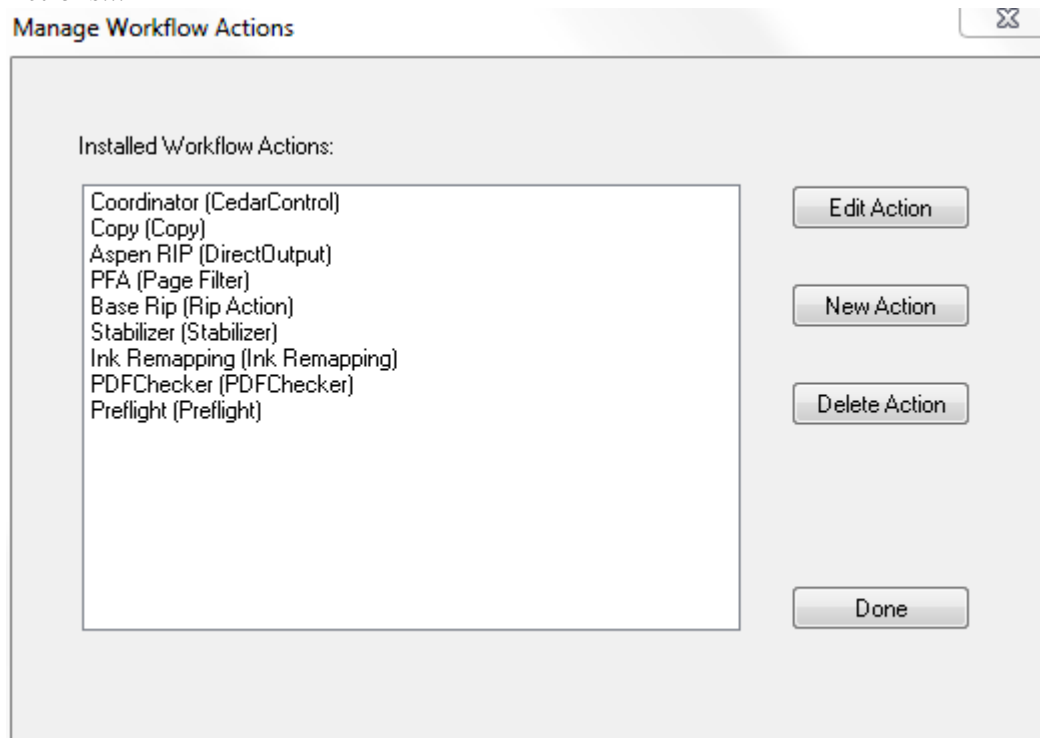


There will now be four new shares, 'xipgb1'...'xipgb4', one each for the four RIPs' PGBDIRs (pagebuffer directories).

- ☐ Start Navigator Server again. Four Navigator RIPs and one Durango Spooler will start.
- ☐ Start Navigator Client and log into the Server as Administrator.

### 2.4 Add RIP Actions to Navigator Server

- ☐ Log into **Navigator Server** as Administrator, select Server Setup→Manage Workflow Actions...



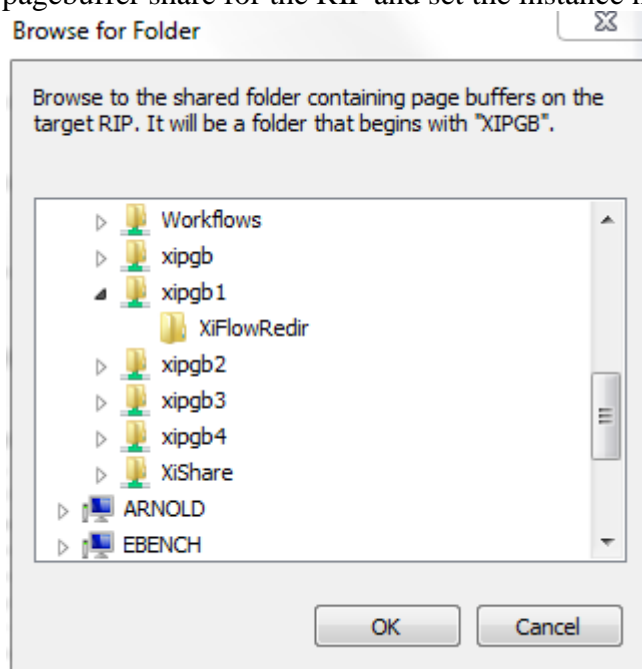
*The naming convention is to have the SOAR RIP Actions and Direct Output Actions' names end with \_<platform number><RIP instance number>, for instance \_24.*

- ☐ Create four RIP Actions named RIP\_11, RIP\_12, RIP\_13, RIP\_14.

## Aspen Quick Start

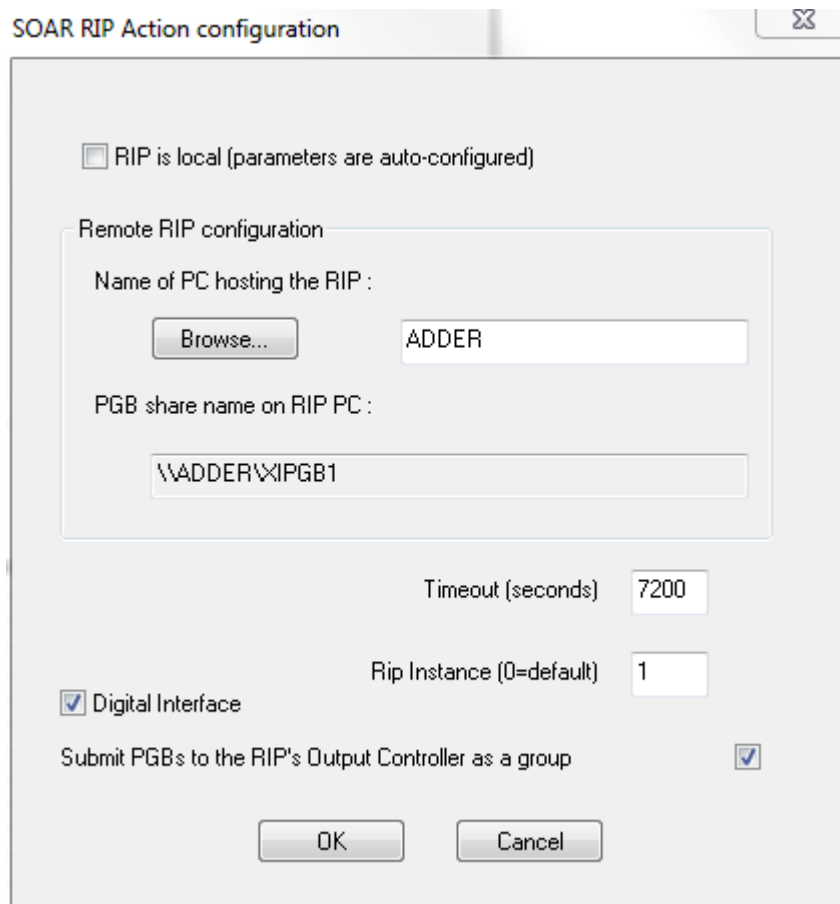


- ☐ For each, uncheck the 'RIP is local' flag and point the RIP Action at the respective pagebuffer share for the RIP and set the instance number in the RIP configuration dialog.



- ☐ Check the 'Digital Interface' checkbox.





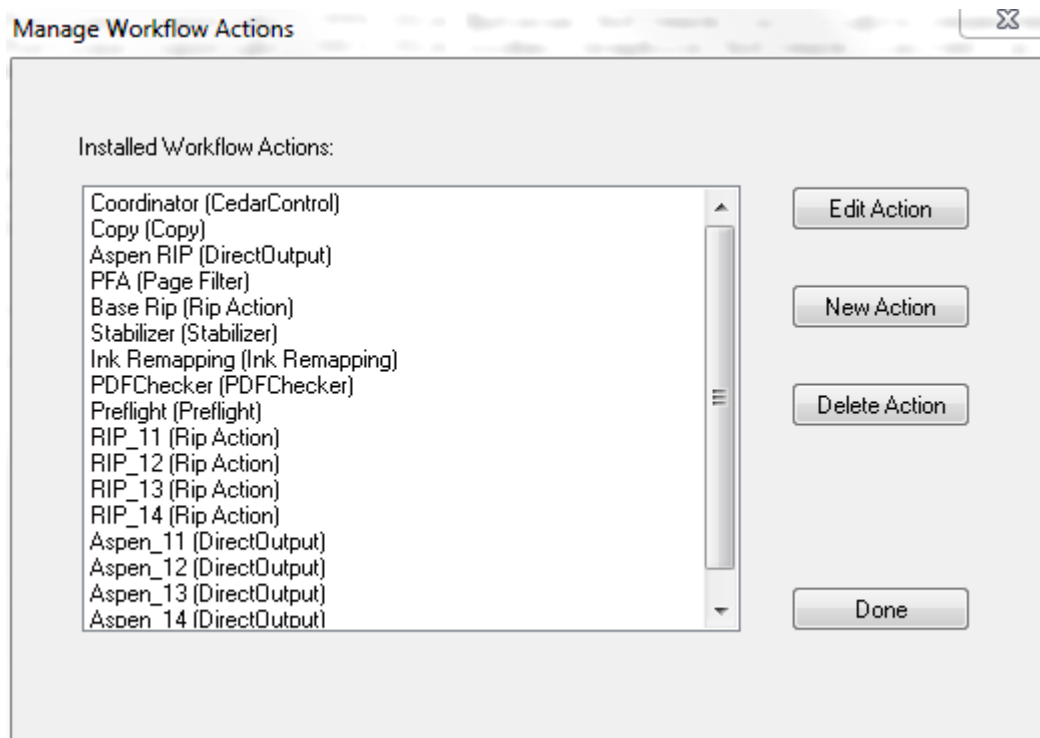
The image shows a Windows-style dialog box titled "SOAR RIP Action configuration". At the top right is a close button (X). The main content area has a checkbox labeled "RIP is local (parameters are auto-configured)". Below this is a section titled "Remote RIP configuration" which contains two text input fields. The first field is labeled "Name of PC hosting the RIP :" and contains the text "ADDER", with a "Browse..." button to its left. The second field is labeled "PGB share name on RIP PC :" and contains the text "\\ADDER\\XIPGB1". Below these fields are two more input fields: "Timeout (seconds)" with the value "7200" and "Rip Instance (0=default)" with the value "1". There are two checkboxes: "Digital Interface" which is checked, and "Submit PGBs to the RIP's Output Controller as a group" which is also checked. At the bottom are "OK" and "Cancel" buttons.

- ☐ Highlight the existing Base Rip (Rip Action) and select Delete Action.

## 2.5 Add Direct Output Actions to Navigator Server

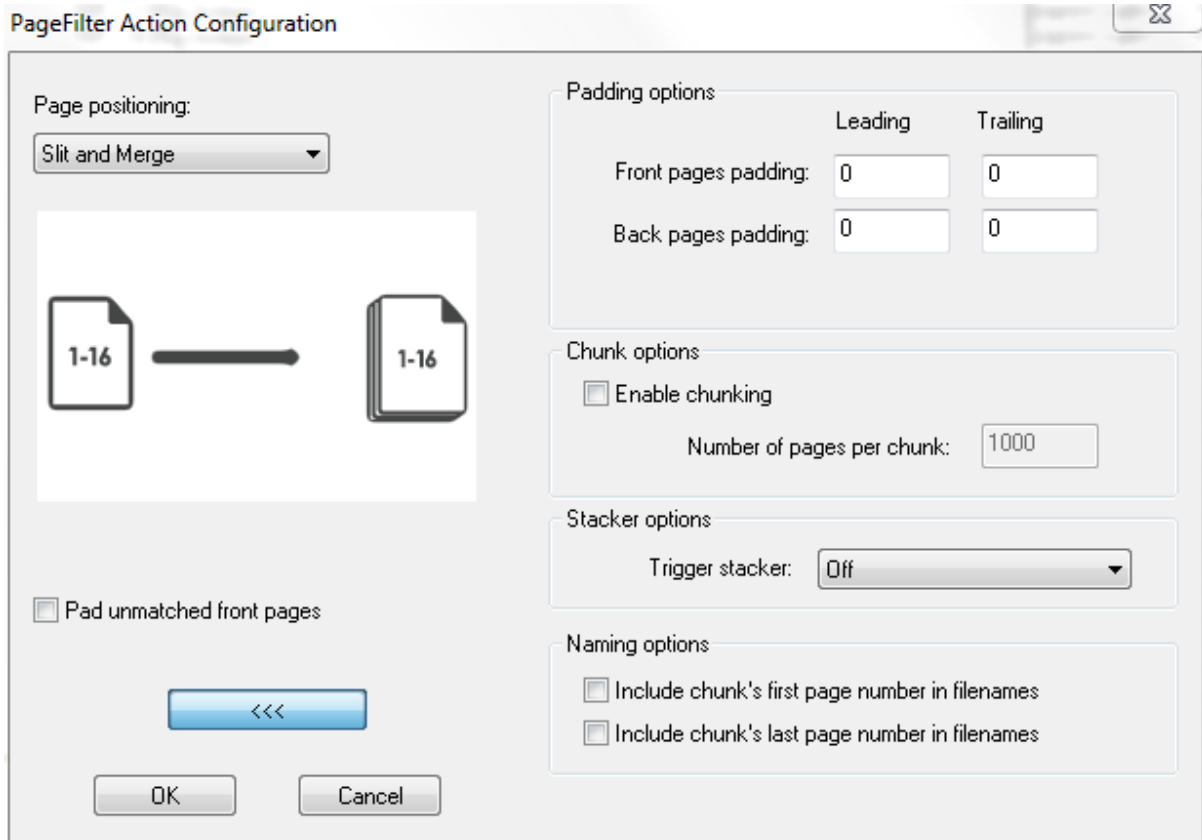
- ☐ In **Navigator Server**, create four Direct Output Actions. Name them Aspen\_11 ... Aspen\_14.

The final result is like this:



### 2.6 Configure the Page Filter Action

- ☐ In **Manage Workflow Actions** dialog, edit the PFA (Page Filter) Action; press Configure.
- ☐ Press the '>>>' button and uncheck the Enable chunking checkbox.



- ☐ Click 'OK', 'OK', 'Done'.


## 2.7 File Prep workflow in Navigator RIP Manager

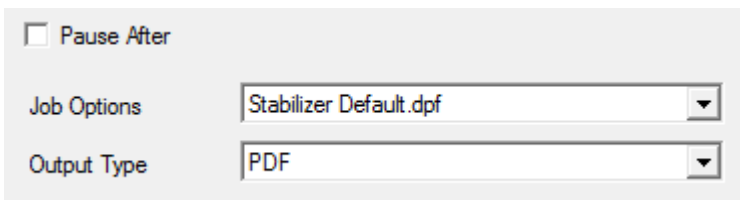
There should already be a **File Prep** workflow containing

Hot Folder → Stabilizer Action → Page Filter Action → Copy Action.

This is the workflow to which PDF jobs will be submitted.

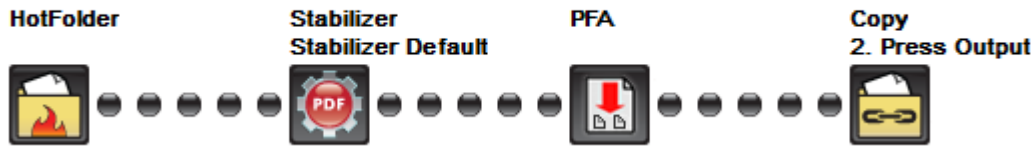
The Copy Action will have "Expand Group File to Multiple Jobs" checked.

- ☐ Use the Wrench button,  to edit the File Prep workflow.
- ☐ In the Stabilizer tab, Job Options, **select** Stabilizer Default.dpf.



- ☐ Press the Wrench again to exit workflow edit mode.


## 1. File Prep



### 2.8 Press Output workflow in Navigator RIP Manager

There should already be a **Press Output** workflow containing  
Hot Folder → Direct Output Action.

RIP Page Buffering will already be set to to 'Single if required'.

- ☐ In **Navigator Client**, edit the Press Output workflow via the Wrench button, , delete the existing Aspen RIP Direct Output Action (right click it; Delete Step)
- ☐ Add two Direct Output Actions, Aspen\_11 and Aspen\_21 the second beneath the first, in a branched workflow.

These should like this

Aspen\_11  
Aspen



not like this

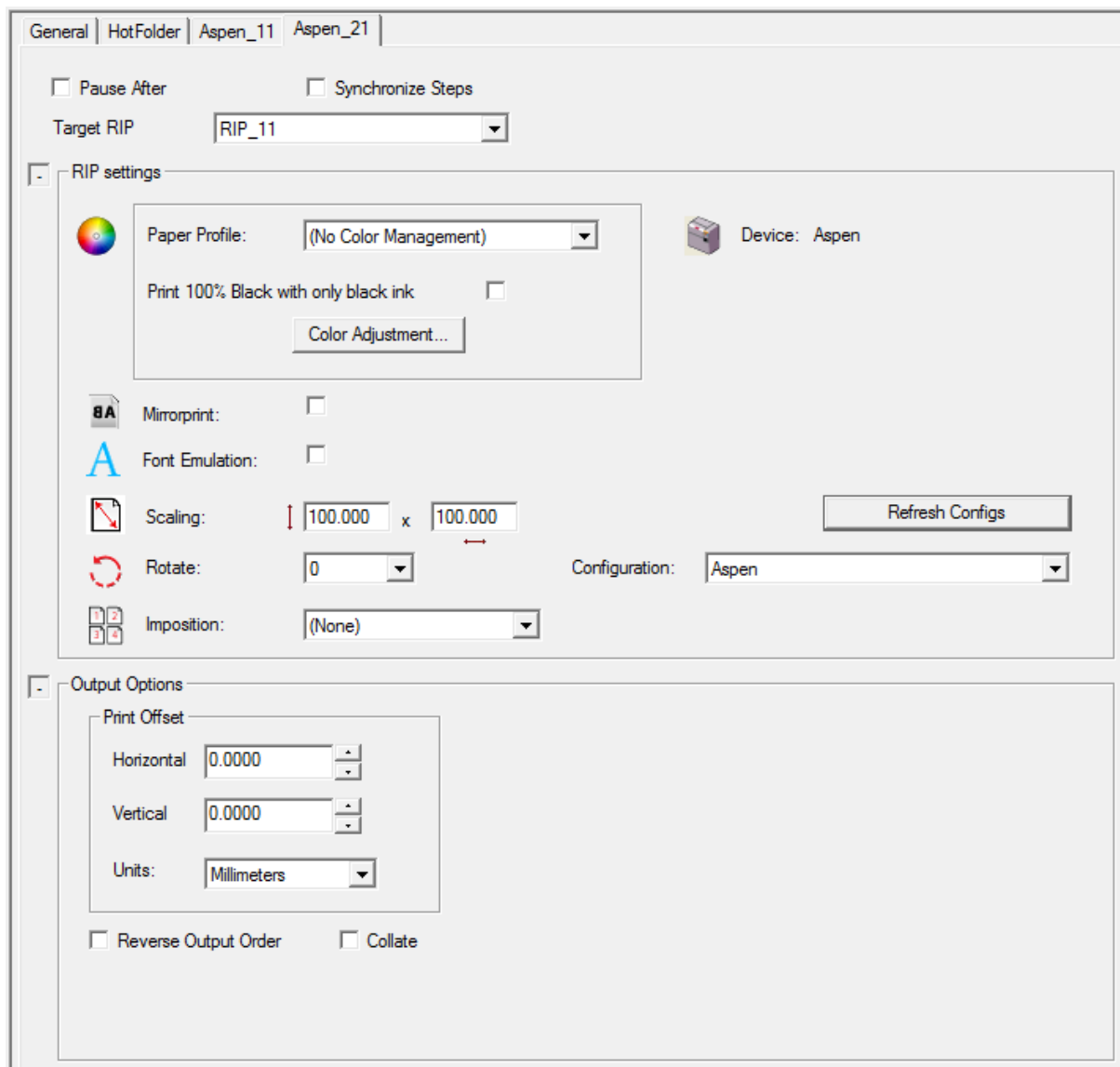
Aspen\_11  
Not Ready



which indicates that the Durango Spooler cannot see the printer.

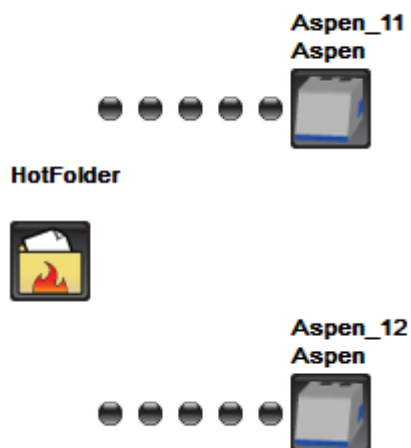
- ☐ In the tab for each Direct Output Action, select the target RIP, as RIP\_11 and RIP\_12.
- ☐ In each Aspen tab, select Refresh Configs. Select Aspen as the configuration.

The Direct Output Actions should now look like this:

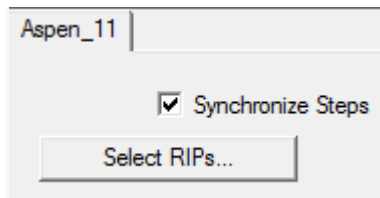


The Press Output workflow should look like this:

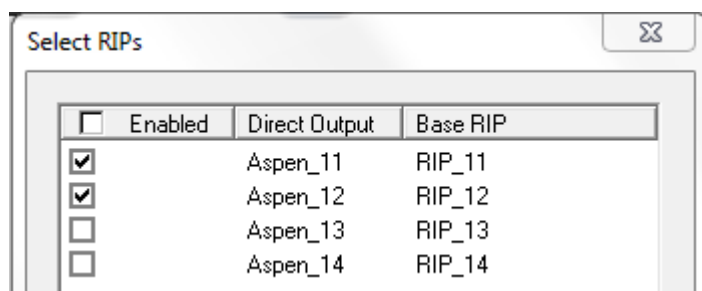
## 2. Press Output



- ☐ Check the Synchronize Steps checkbox on the Aspen\_11 tab. It should now look like this, with the second Direct RIP Output Action tab hidden.



- ☐ Press the 'Select RIPs' button:



- ☐ Select the other two RIP checkboxes and press OK. This will merge the four RIPs and show them as one in the workflow, labelled 'x4', like this:

## 2. Press Output

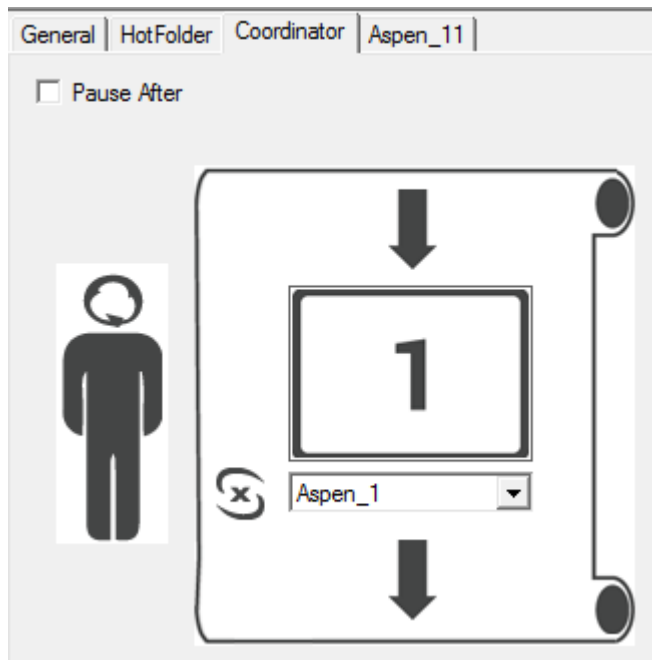


*Alternatively, add all four Direct Output Actions manually and select the corresponding RIP for each; then check Synchronize Steps to merge them into one.*

- ☐ Add a Coordinator Action after the Hot Folder Action of the Press Output workflow:



- ☐ In the **Coordinator Action tab** of the Workflow Editor, set it to use RIP 1 and Aspen 1.



- ☐ Press the Wrench button to exit workflow editing mode.

### 3. Usage

- ☐ Submit jobs to the **File Prep** workflow by selecting File→New Job... in the Navigator Client, and on the **Press Output** workflow check that they are correctly processed and printed.