

Installing Aspen R7 on a two-head system

Document v1.3 12Feb16. *Master is in SVN.*

Requirements

Aspen installer 6212 or later.

ABTtoTIFF.exe.

Python 3 installer, if using ConvertABTsToTIFF.py (or do the conversion manually).

StitchTiff.exe.

FakeBorrego folder (if a two-head printer is not available).

Aspen v2 quick start v1.0.docx.

Aspen v2 XEncrypt code.

Procedure

If you don't have a two-head printer

1. For testing a two-head stitching system in the absence of a printer, set up as follows:

1.1 Copy the FakeBorrego folder into

C:\Users\<username>\AppData\Roaming\Xitron\durangospooler

on PC 1 and PC 2.

1.2 On PC 1 and PC 2 Configure Durango to output to File instead of Socket.

1.3 On PC 1 double-click "FakeBorrego.exe - Descanso.cmd" to run Fake Borrego as Descanso on Port 82.

1.4 On PC 1 and PC 2 double-click "FakeBorrego.exe - Y_CMK.cmd" to run Fake Borrego as Y_CMK to Port 81.

Install a single-head two-RIP system on PC 1

2. Follow the Aspen 2-head Quick Start, "Aspen v2 quick start.docx" to install a single-head system on PC 1. **Before starting Step 2.3 (duplicating the RIPs) in the Quick Start**, follow Steps 2.1 to 2.4 below.

2.1 If you are upgrading an existing system, check that the Stitch Overlap (Pixels) setting in the Aspen v2 plugin settings in the RIP is set to 16.

2.2 Edit C:\Users\user\AppData\Roaming\Xitron\Navigator\XiflowServer.ini and check that it contains a section defining the Page Filter Action Stitch Overlap:

```
[PFA]
StitchOverlap=16
```

2.3 Now resume the Aspen v2 Quick Start with the Multi-RIP Utility step.

2.4 If you are installing without a printer present, double-click

Install two RIPs on PC 2

3. On PC 2, run the Aspen installer to install a RIP as 'RIP only'.

3.1 On PC 2, if you are upgrading an existing system, check that the Stitch Overlap (Pixels) setting in the Aspen v2 plugin settings in the RIP is set to 16.

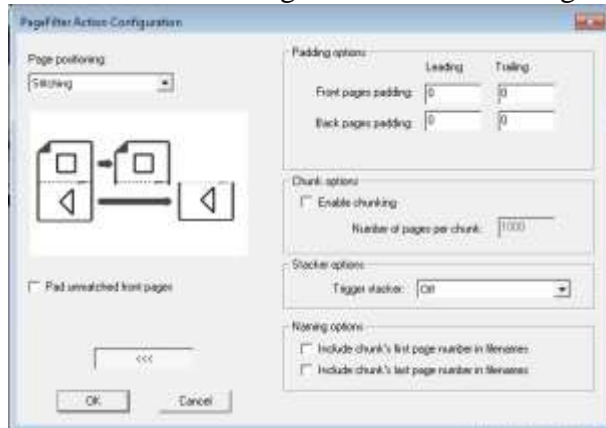
4. On PC 2 use the Multi-RIP Utility to duplicate instance 0 to instances 1 and 2 and then clear instance 0. This is very similar to Step 2.3 in the Aspen v2 QuickStart.

Configure RIP Manager to use the RIPs on PC 2

5. On PC 1, add RIP Actions to Navigator Server for the two RIPs on PC 2 as RIP_21 and RIP_22. Similar to step 2.3 in the Aspen v2 QuickStart.

Complete the configuration

6. Edit the Page Filter Action on the Server and set it to Stitching Mode. Make sure Chunking is turned off in the Page Filter Action settings as well.



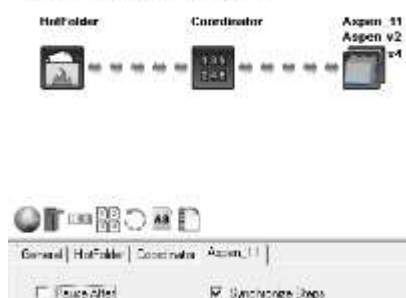
7. Configure the Press Coordinator Action:

7.1 In the Client, Duplicate the Press Output workflow and name it Press Stitched Output.

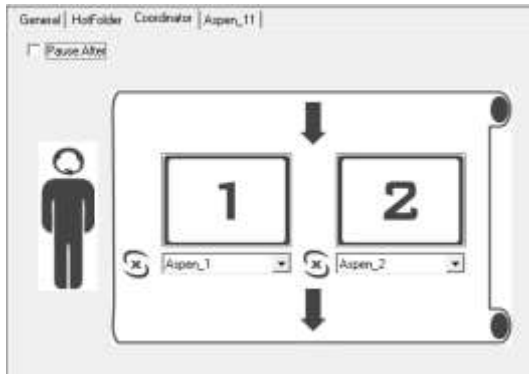
7.2 Add a Press Coordinator Action before the Direct Output Step

7.3 Add a second Direct Output Step and use the Synchronize checkbox and Configure RIPs button to add the rest of the steps for all of the RIPs.

2. Press Stitched Output



7.4 Configure the Press Coordinator Action to match the newly added RIP platforms in the workflow.



8. In the Client, Edit the File Prep Workflow and change the Copy Action destination to the Press Stitched Output workflow.



Replicate the master RIP settings into the other RIPs on PC 1 and PC 2

9. Run XiRemote Master and Servant on PC 1. Run XiRemote Servant on PC 2.

10. Use XiRemote to duplicate RIP instance 1 on PC 1 over RIP instance 2 on PC 1 and over both RIP instances on PC 2 as follows:

10.1 On PC 1 XiRemote Master, click the 'Add' button to add PC 2. Make sure that none of the RIPs on either PC have dialogs left open other than the base 'Navigator - SOAR' dialog showing the RIP log.

10.2 On PC 1 XiRemote Master, select PC 1 and PC 2 in the list of PCs; select 'Copy RIP configuration' from the drop-down list; press the 'Run Command' button to duplicate the RIP settings. The RIPs will automatically be stopped before the copies are done, and restarted afterwards.

If you have a two-head printer

11.1 On PC 1 start Navigator Server. The two RIPs on both PC 1 and PC 2 will launch.

11.2 On each PC, one of the RIPs will launch Durango spooler to the fake Borrego on Port 81. (The other RIPs won't launch it as it's already running.)

11.3 Output jobs which are wide enough to span the gap between the left and right print heads, and check that they are correctly aligned.
END

If you don't have a two-head printer

11. For testing a two-head stitching system in the absence of a printer, set up as follows:

11.1 On PC 1 start Navigator Server. The two RIPs on both PC 1 and PC 2 will launch.

11.2 On each PC one of the RIPs will launch Durango spooler to the fake Borrego on Port 81. (The other RIPs won't launch it as it's already running.)

12. Output jobs and check that they will be correctly stitched on a two-head printer:

12.1 On PC 1 and PC 2 Install Python 3.x if not already available on the PC.

12.2 On PC 1 and PC 2 Copy the ConvertABTsToTIFF.py script to the C:\Temp\Durango folder, and double-click it to run. (or convert ABT files to TIFF manually). It will run continuously and monitor the folder; any .abt files it sees will be converted to TIFF and moved into a folder named 'Done'.

13. Recombine the left- and right-head TIFF images and stitch them together. This simulates the action of the printer, overlaying the left and right images, with overlap, into a single image:

13.1 Gather the TIFF files from : \Temp\Durango\Done to a folder on PC 1.

13.2 On PC 1 Run StitchTiff.exe.

Press 'Select the source folder' and select the folder containing your TIFF images.

The left and right TIFF file menus will be populated with the set of image names.

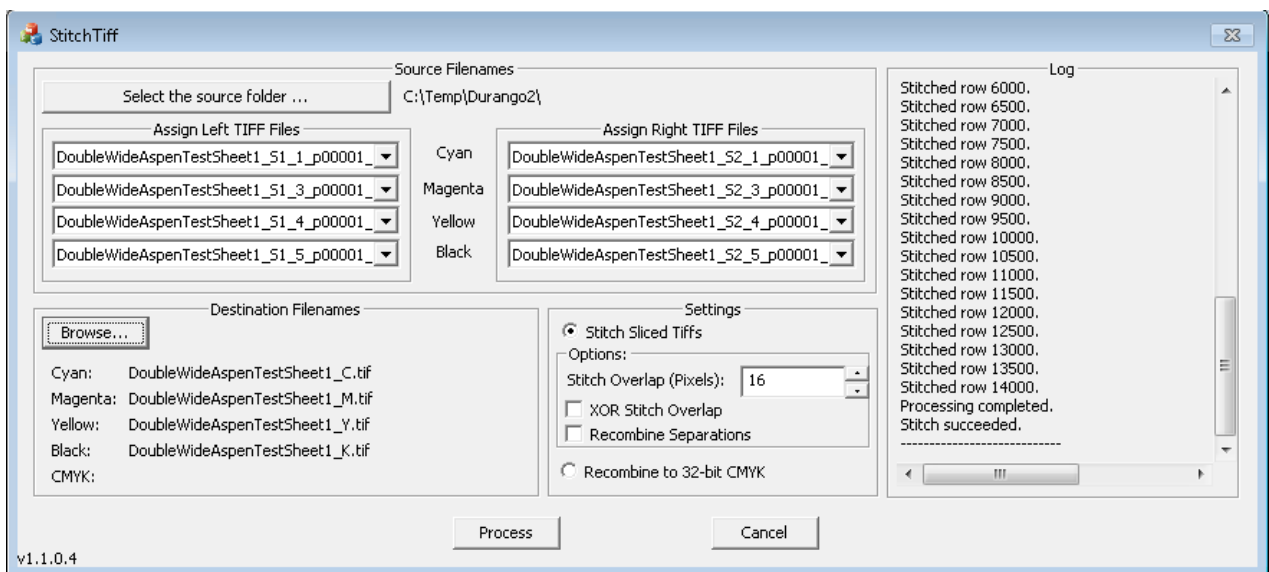
Select the images to combine, in the left and right hand side 'Assign' boxes.

Select 'Stitch Sliced TIFFs'.

Select the Recombine Separations checkbox.

Enter the Stitch Overlap (Pixels) you used when preparing the images, e.g. 16.

In the Destination Filenames section, Browse to a folder where you wish to place the stitched images.



13.3 Press the 'Process' button to stitch the TIFF images together to single recombined TIFF image; carefully inspect result has no misalignment. If instead you do not have the Recombine Separations checkbox, the output will be a stitched TIFF image for each color channel.

13.4 For checking alignment, there are alternative screen patterns available in the 'Test screens' folder: TESTCoarse27648 and TestHDSMedium. To use these, copy these folders to C:\ProgramData\Xitron\XiShare\Dithers\Corrected and select them in the Aspen v2 settings dialog in the RIP. These screen patterns have black vertical lines every twenty pixels, so you

can zoom into the resulting stitched file, and count the pixels to ensure that after stitching the lines still occur every twenty pixels across the head boundary.

The Troubleshooting guide, which used to be here, is now available as a separate document.