



NAVIGATOR

ROOM Proof



YOUR BUSINESS. OUR DRIVE.

Foreword

Room Proof is an optional module for Navigator Server 4.5 and later. The module's purpose is to gather 1 bit TIFF files, recombine, descreeen, and colorize them for the purpose of creating hard copy and soft proofs. **The companion manual “File Name Analysis” will also be necessary for successful configuration of ROOM Proof.**

If you just want to get on with ROOM Proof as quickly as possible, consult our “ROOM Proof Quick Start Guide”.

All of our documentation is available on the Navigator installation disk and on our website, Xitron.com.

Introduction

The ROOM Proof Workflow Action is used to combine separated TIFF files into composite TIFFs for proofing and general output purposes.

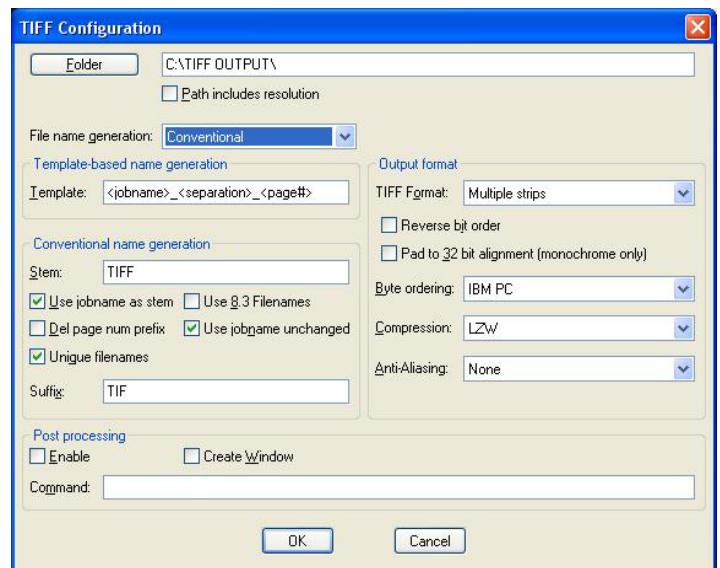
ROOM Proof configuration consists of 3 steps:

1. Configure file name recognition to properly recognize TIFFs to combine.
2. Configure descreeening and resolution for the resultant proof
3. Create a workflow which uses both of these configuration settings to accept files and create proofs.

This document will explain how ROOM Proofing is configured with two different types of workflows. The first example shows a workflow with the ROOM Proofing Action configured using a Navigator RIP. The second example will show you how to configure the ROOM Proofing Action using 1bit tiffs imported from any RIP or workflow system.

Configuring Navigator RIP's Tiff Output

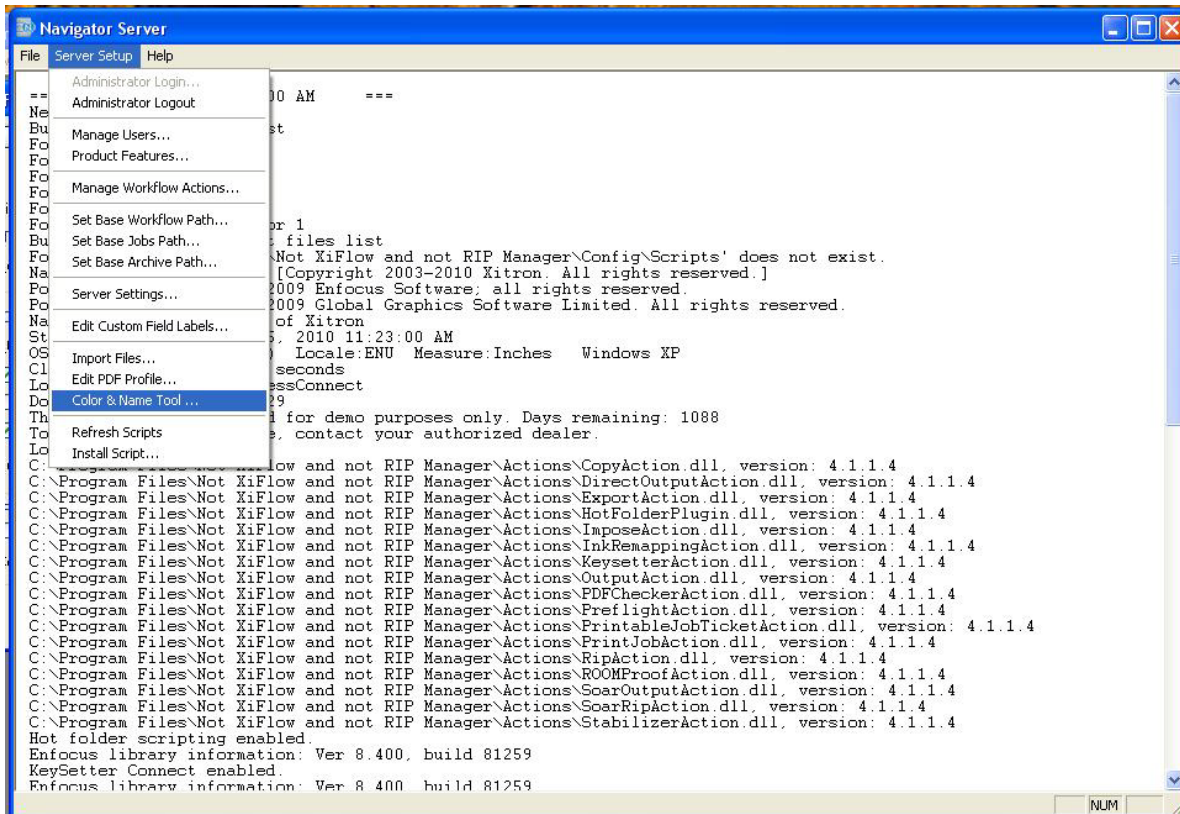
The first step is to create tiff output with a proper *file name generation*, so that Navigator Server can recognize a group of tiffs by colors, pages, and job. In this example we will be using a Conventional file name generation from your Navigator RIP TIFF Page Setup. The TIFF file name generation should be set up as shown below. Check *Use job name as stem*, *Use jobname unchanged* and *Unique filenames*.



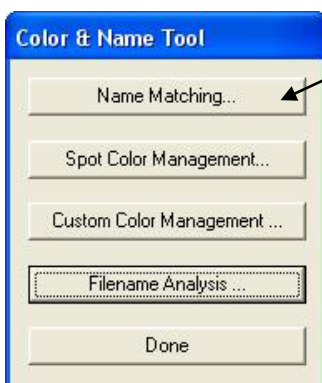
Configuring File name recognition

(Note: We will walk you through the configuration of file name recognition briefly. For any Xitron workflow the system ships with a number of name recognition templates all ready. The file name system can be configured to work with any workflow or RIP you prefer. For more information on that see our document entitled “File Name Analysis”).

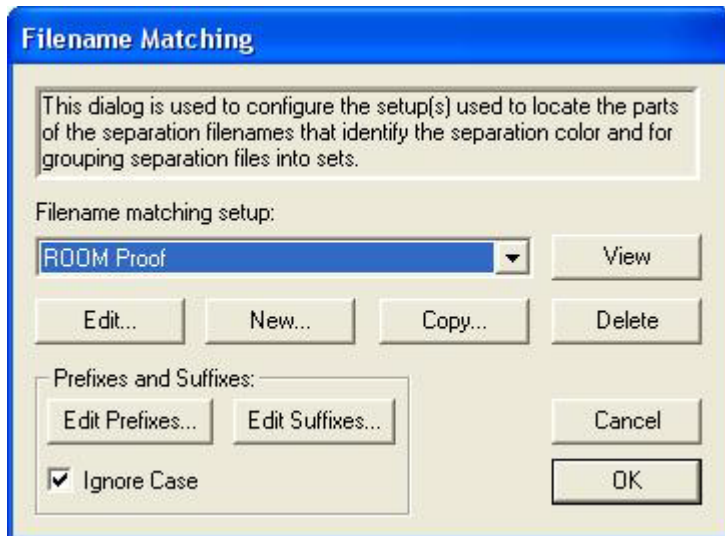
After the RIP Page Setup is set up properly you can configure Navigator Server for TIFF collection and ROOM Proofing. Open Navigator server and select Color & Name Tool... from the Server Setup pull down menu



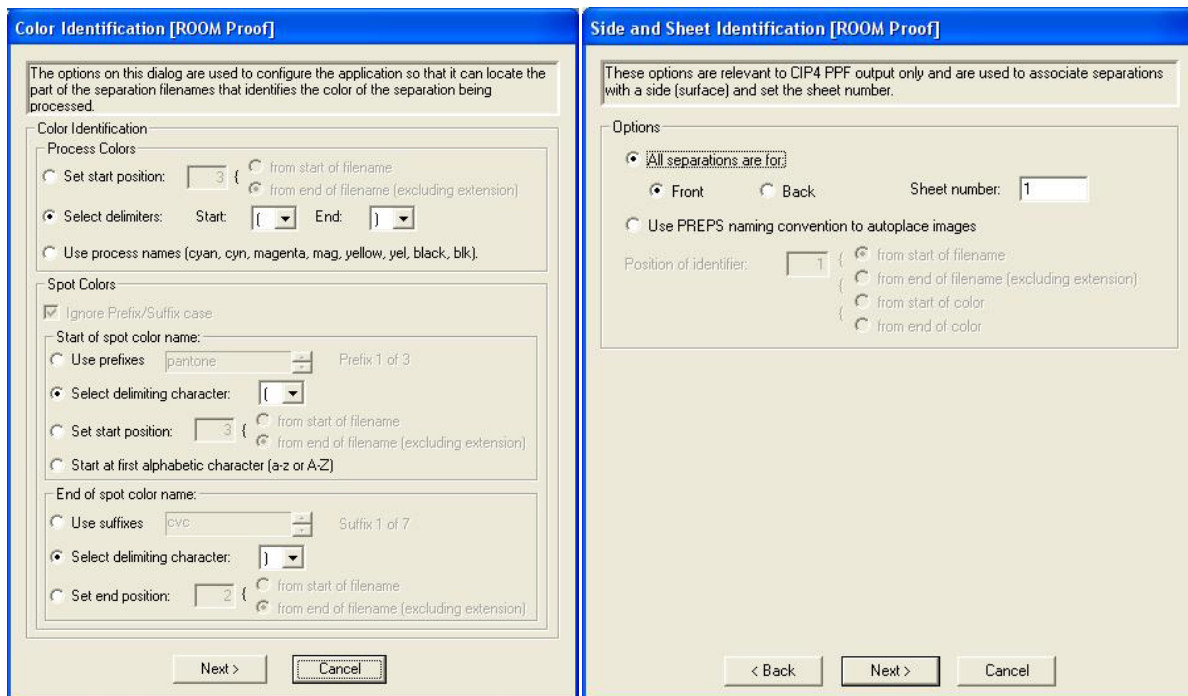
Once the Color & Name Tool is open select Name Matching.



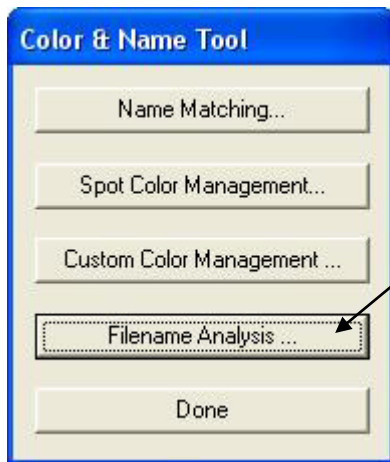
Select New from the File Matching Window.



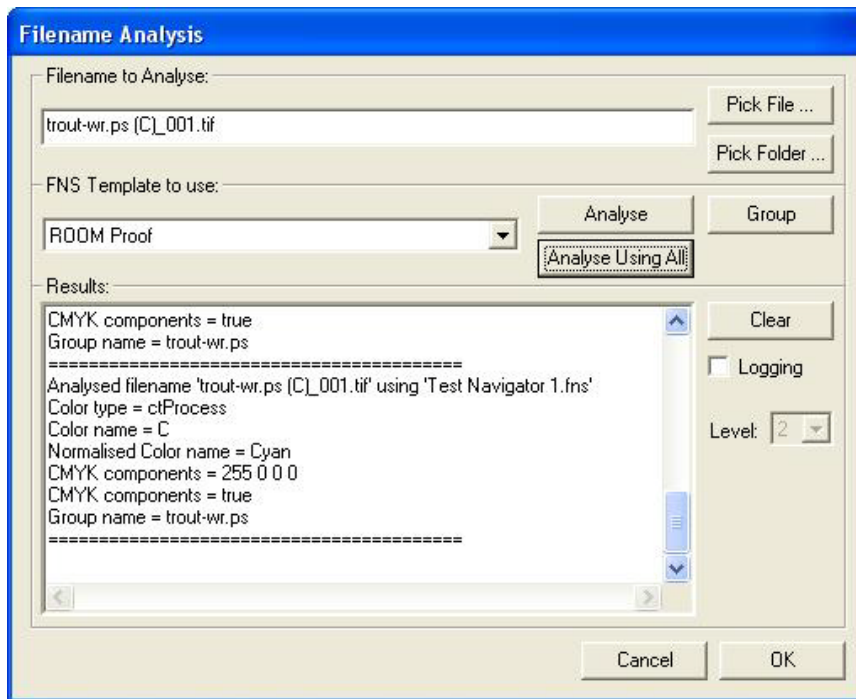
The first configuration window is used for color identification. Select the appropriate settings for detecting colors in your tiff files. The second window is not used for ROOM Proof. You may leave it alone (as shown) and move on. (It is for Keysetter PPF output only). This is the setup we will be using for the conventional Harlequin RIP Tiff naming. Save your setting as ROOM Proof.



To test the validity of your filename configuration we have provided a tool to check your files with your file name configuration. To test your configuration click the Filename Analysis button.

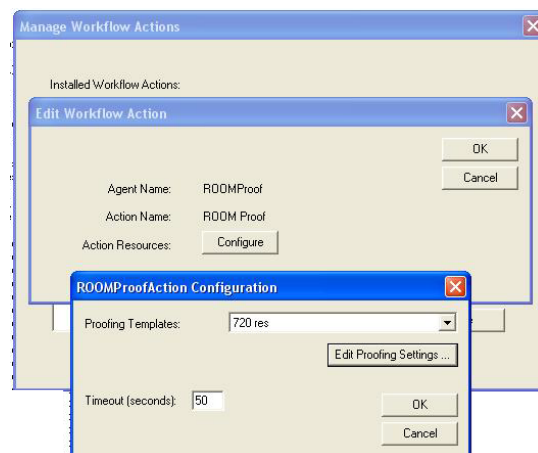


Output some tiff files from your RIP using the name generation we set up in the beginning of this document. Click on Pick File and locate the files. Select one of the tiff files. Select the new File name Template you just created and click *Analyze Using All*. You will see a report within the Results window indicating the interpreted Color type, Color name, CMYK components, and job name.



Configuring a ROOM Proof Workflow Action

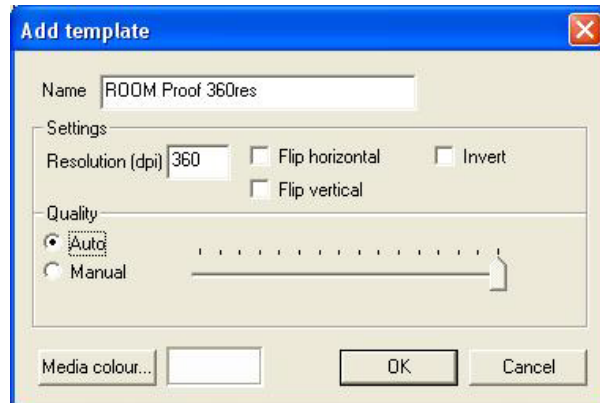
From the Navigator Server Setup pull down select Manage Workflow Actions to create a new ROOM Proofing Workflow Action. Select *RoomProof* from the list and name it ROOM Proof. Click on *configure* to open the ROOMProofAction Configuration window. Click on *Edit Proofing Settings* to open the Add Template window.



The *Add Template* dialog box is where we configure the settings for the ROOM Proof file generation. We will control resolution and page orientation. For best results we suggest that you use a resolution setting that is divisible by the output devices output resolution. In our example we will be using an ink jet printer that images

at 720 dpi resolution, so we will set our ROOM proof to 360 dpi which is half of 720.

The quality setting is used to control the descreening of 1bit TIFFs. If Auto is selected then the TIFFs are descreened to the highest level of descreening. Manual can be used to control the amount of descreening desired by using the slider. We will select Auto.

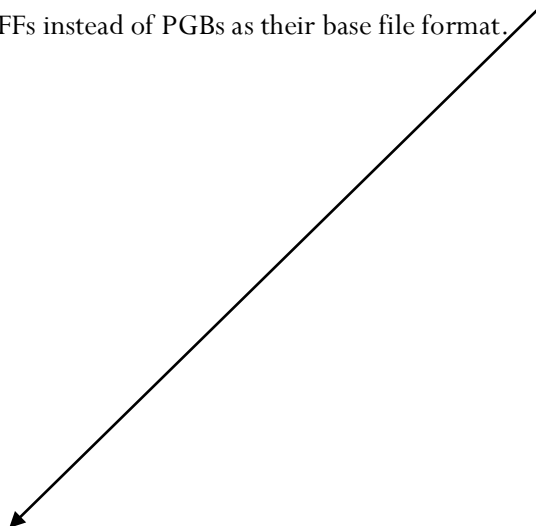


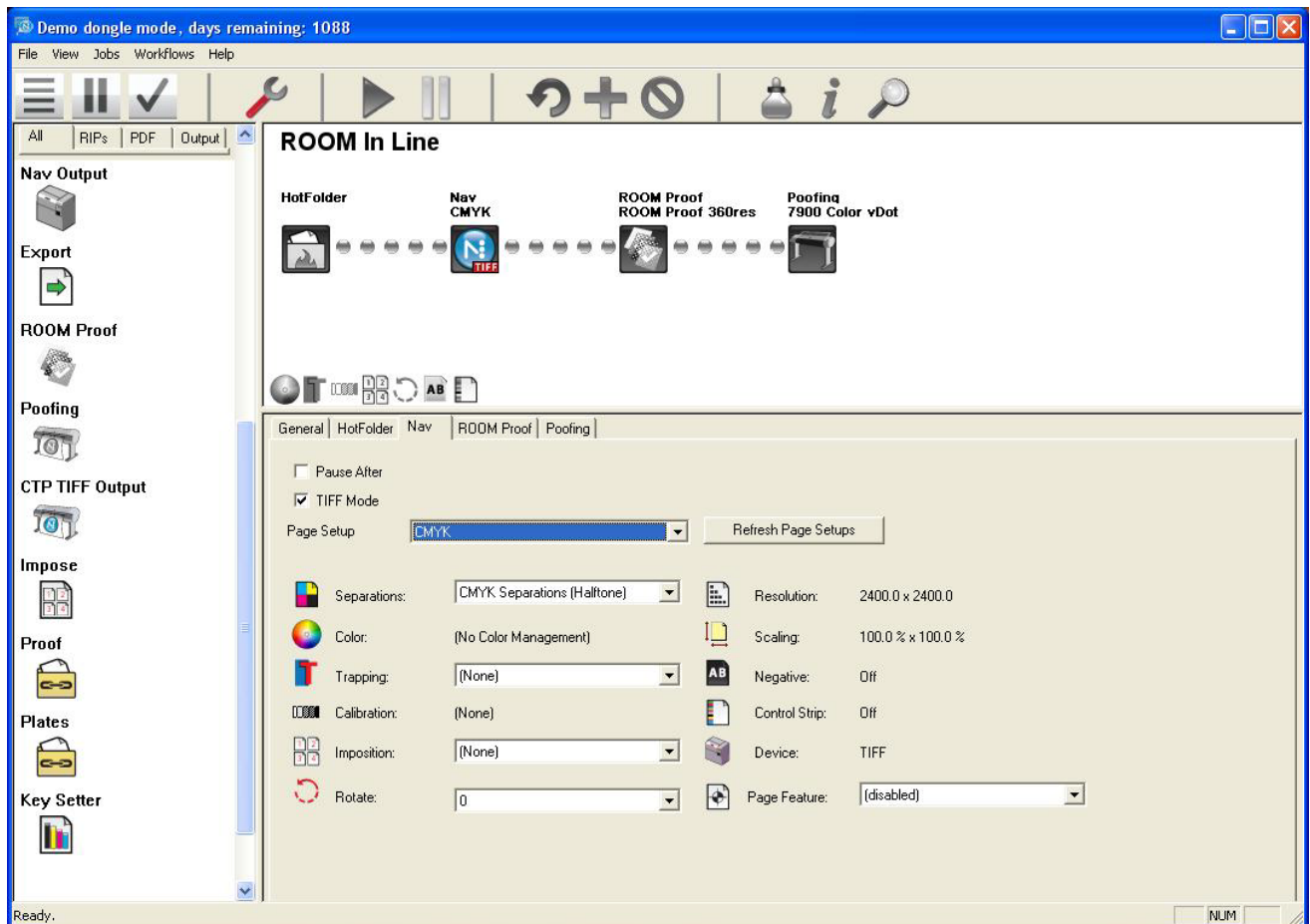
Configuring a Workflow Using ROOM Proofing with Navigator 1bit Tiffs

This example will show you how to create a workflow consisting of a hot folder, Navigator TIFF RIP, ROOM Proof and a Direct Output Action for an Epson 7900. *For more details on any of these Workflow Actions, please consult the Navigator Server Manual.*

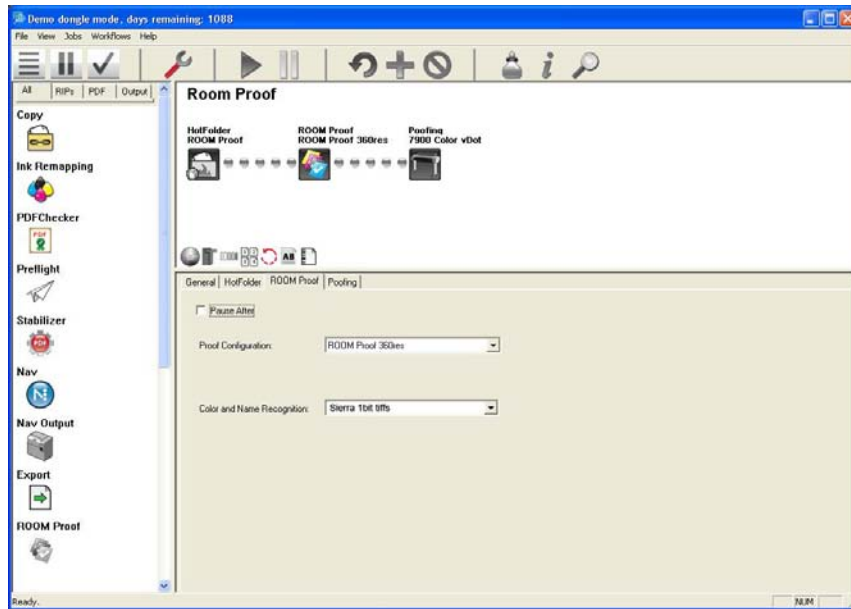
Create a new Workflow Called *ROOM In Line*. Place a RIP action, ROOM Proof Action and Direct Output Action as shown below.

Use a TIFF Output Page Setup for the RIP configuration and select TIFF Mode. By using TIFF Mode the Harlequin RIP will use TIFFs instead of PGBs as their base file format.

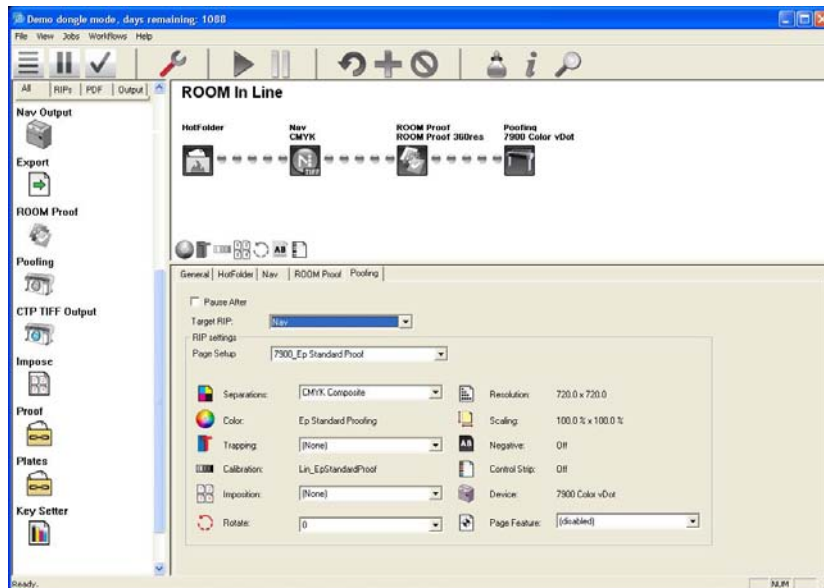




Within the ROOM Proof Action Select the Proof Configuration created (*ROOM Proof 360res*). Then select the Color and Name Recognition Template so that the ROOM Proof module can identify the individual tiffs for compositing (*ROOM Proof*).



The ROOM Proof Action creates a contone tiff of the combined 1bit tiffs. Select a Page Setup that will process the composite ROOM Proof tiff from the Direct Output Action. In this example we are using an Epson 7900 to color manage and output the ROOM Proof.



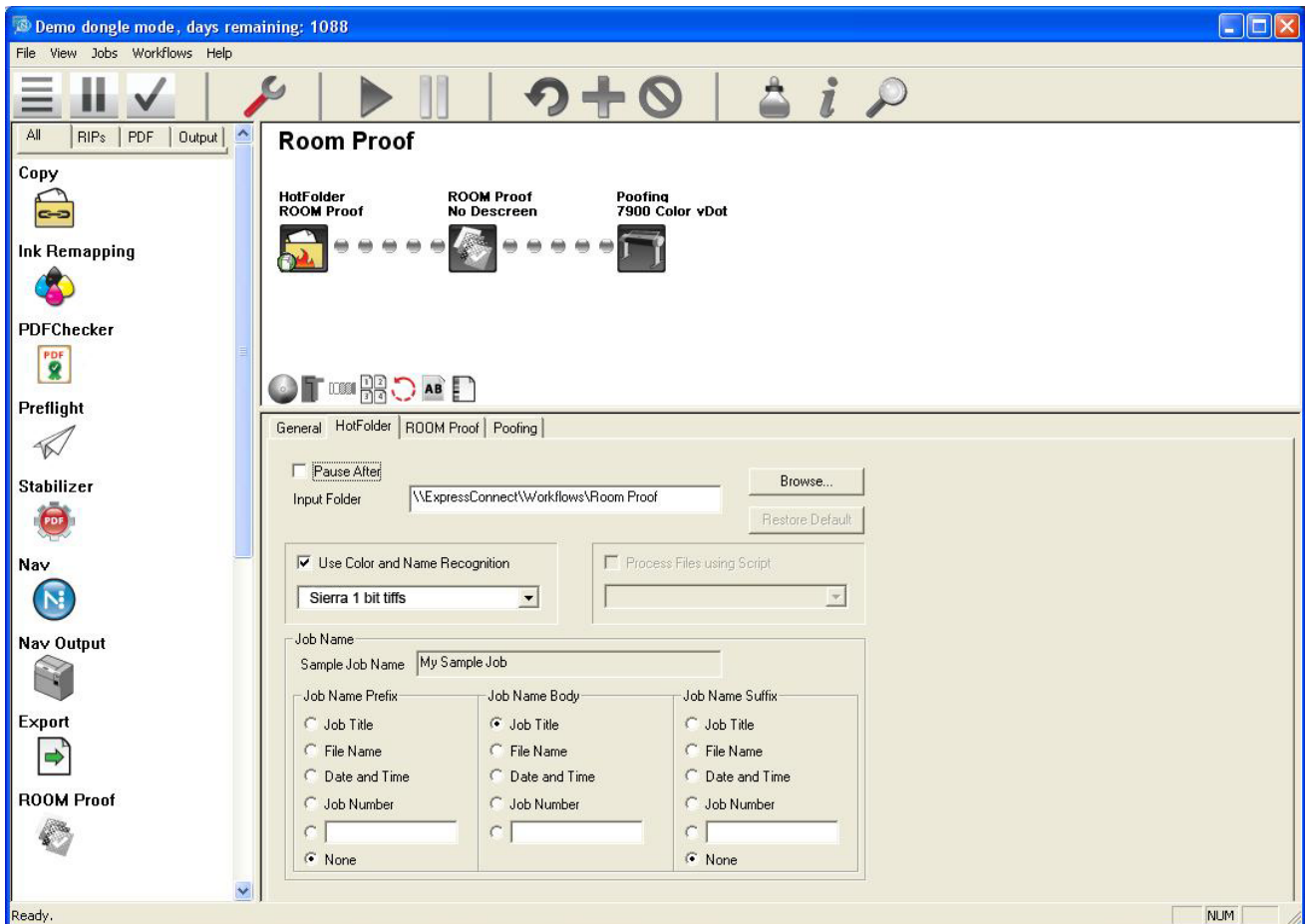
Configuring A Workflow To Collect Tiffs For ROOM Proof Output

The ROOM Proof Action can be used to collect 1bit tiffs from other RIPs. This example shows how to set up a

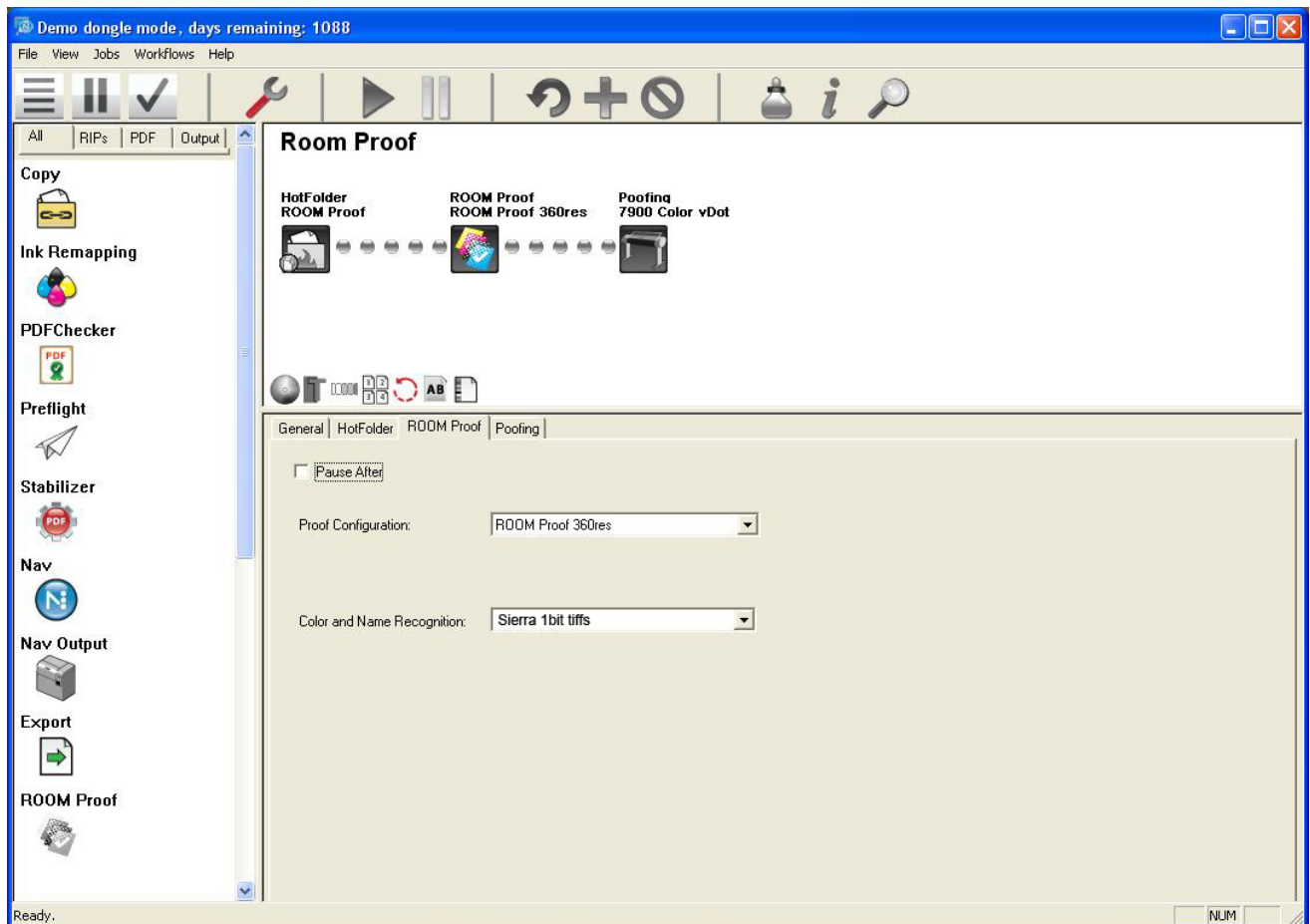
workflow to collect and combine 1bit tiffs and recombine them for ROOM Proof output.

Build a Workflow Named ROOM Proof. Place the ROOM Proof Action and Direct Output Action as shown below. In order for the workflow to group the appropriate tiffs together a *Color and Name Recognition* template must be used at the Hot Folder level. Check the box *Use Color and Name Recognition* and select an appropriate name template. In this case we are selecting a name template configured to detect tiffs from a Xitron Sierra Workflow (Sierra 1bit tiffs).

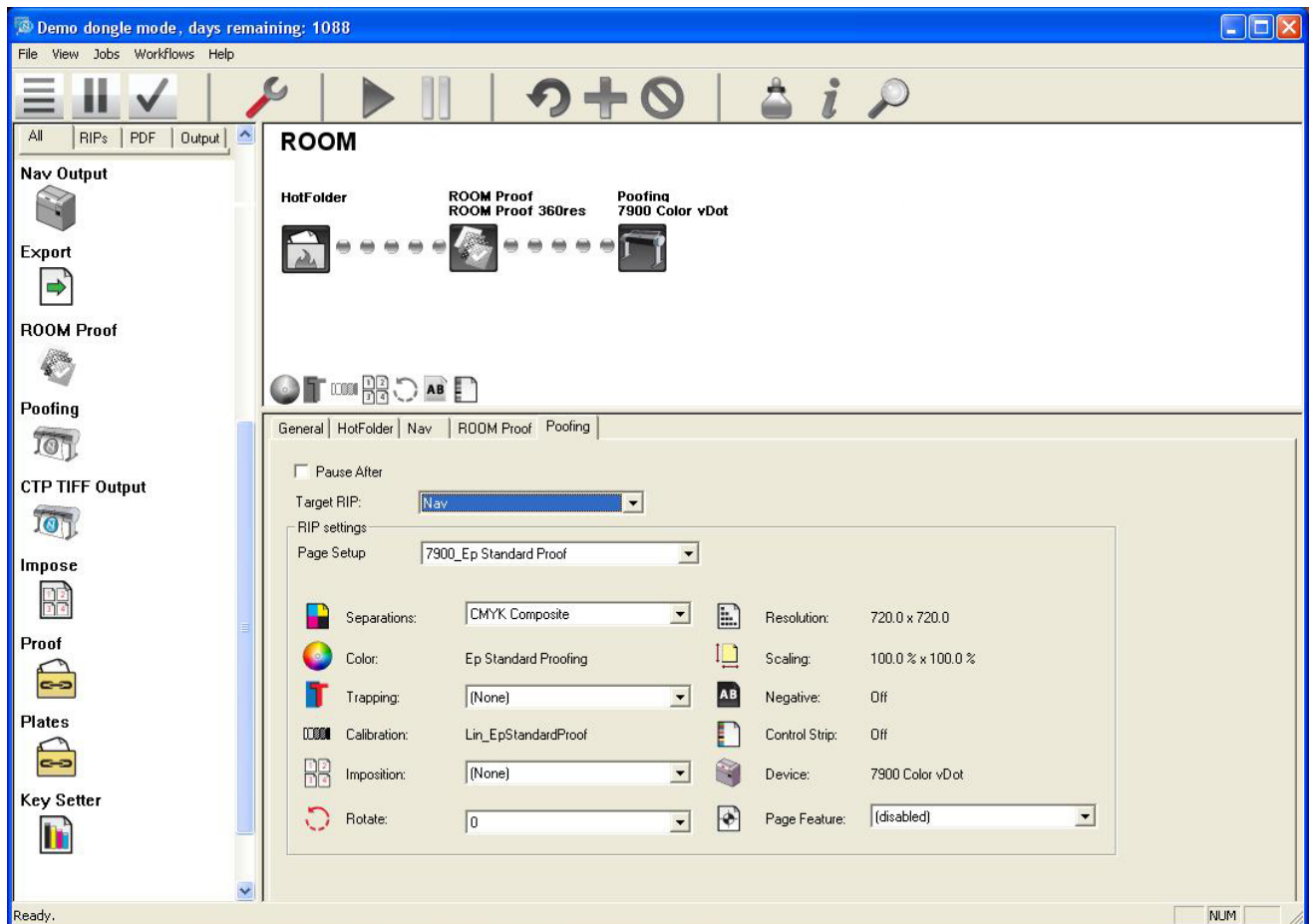
(Note: The system ships with a number of name recognition templates to work with Xitron workflows. The file name system can be configured to work with any workflow or RIP you prefer. For more information on that see our document entitled “File Name Analysis”).



Within the ROOM Proofing Action Select the Proof Configuration created (ROOM Proof 360res). Then select the same Color and Name Recognition Template as the hot folder so that the ROOM Proof module can identify the individual tiffs for compositing (Sierra 1bit tiffs).



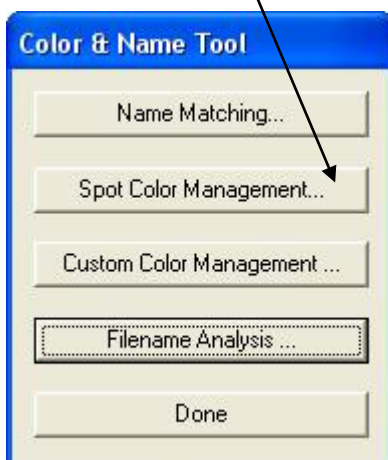
The ROOM Proof Action creates a contone tiff of the combined 1bit tiffs. Select a Page Setup that will process the composite ROOM Proof tiff from the Direct Output Action. In this example we are using an Epson 7900 to color manage and output the ROOM Proof.



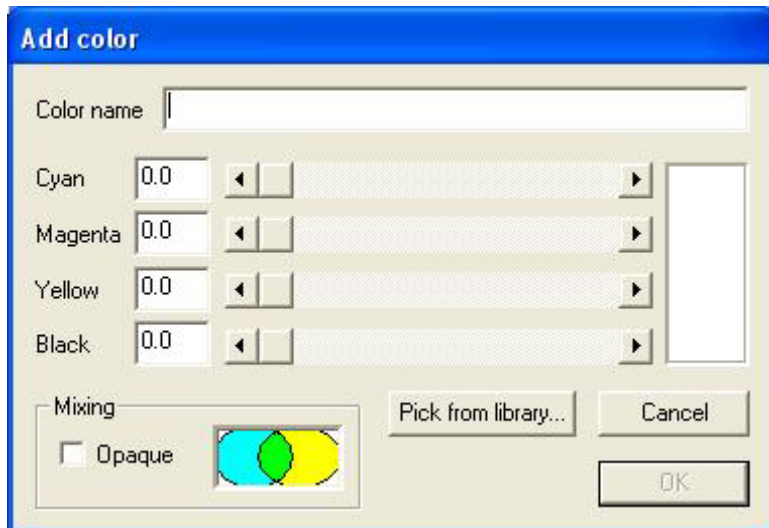
Adding spot colors to the system

In the event that you would like to add a spot color to the system so it may be recognized and colored properly, you may do so at the Server in the Color & Name Tool.

Choose Spot Color Management.



Choose “Add Color” from the library window and the following window appears. Here you may add any color with any mix you like. If you wish to base it on an existing color, choose “Pick from Library”. If you do not wish to base the new color on an existing color, simply pick a name and begin.



Add color

Color name


Cyan

Magenta

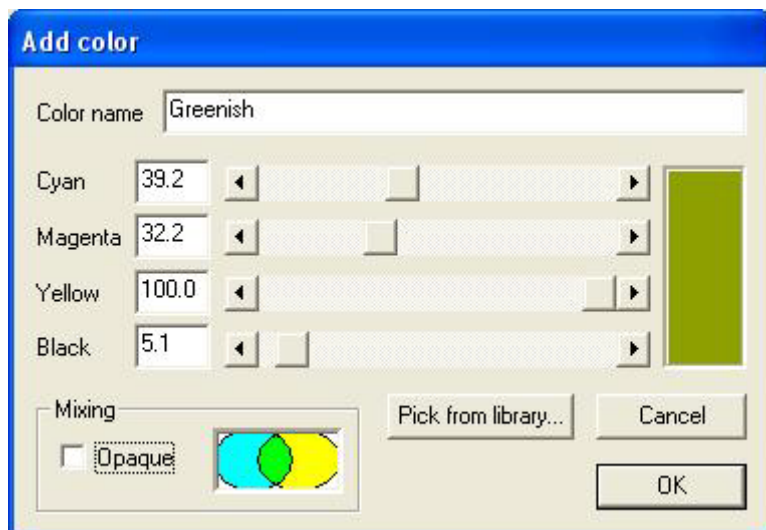
Yellow

Black

Mixing

☐ Opaque 

Enter the name and the CMYK equivalent color mixture.



Add color

Color name


Cyan

Magenta

Yellow

Black

Mixing

☐ Opaque 

For most colors, leave the opacity setting off. To cause knock out of the color beneath your new color, you may choose to check “Opaque”.



Mixing

☒ Opaque 

Once you have saved your color it will appear in the User defined color list and the ROOM Proof system will recognize separations with that name and colorize them accordingly.

