

I can't connect to a remote RIP on a multi-Aspen system

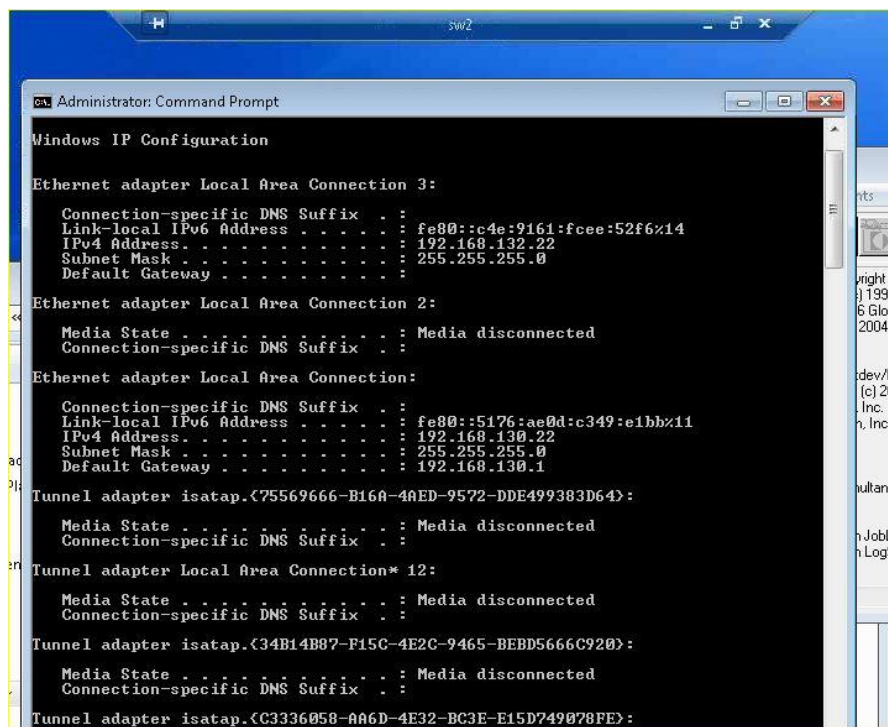
The order of the nics needs to be adjusted.

This is detailed here:

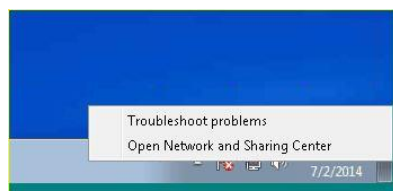
[The short answer from Microsoft.](#)

A more windbaggish answer

If the 1 Gb network that the RIP boxes and the Borregos talk on is not first in the order of nics, then the RIP Manager server will not be able to contact the remote SOAR RIP. This shows the 10Gb Gynea/Moby network first and the 1Gb Borrego network second:

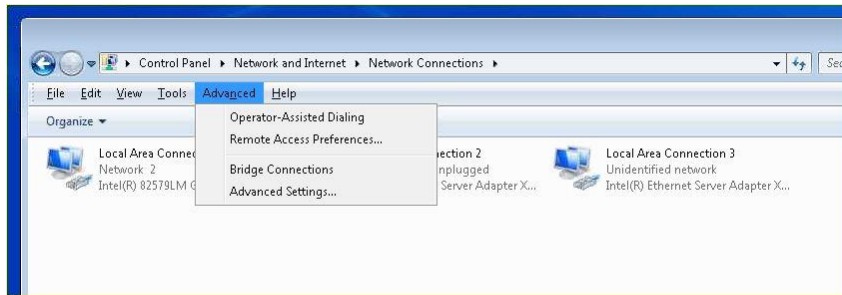


This can be fixed through advanced network settings. Click on the tray icon:

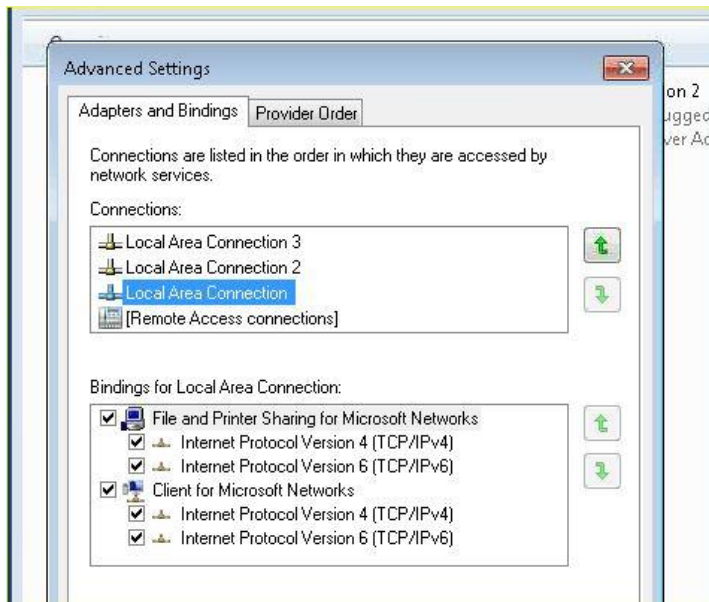


I can't connect to a remote RIP on a multi-Aspen system

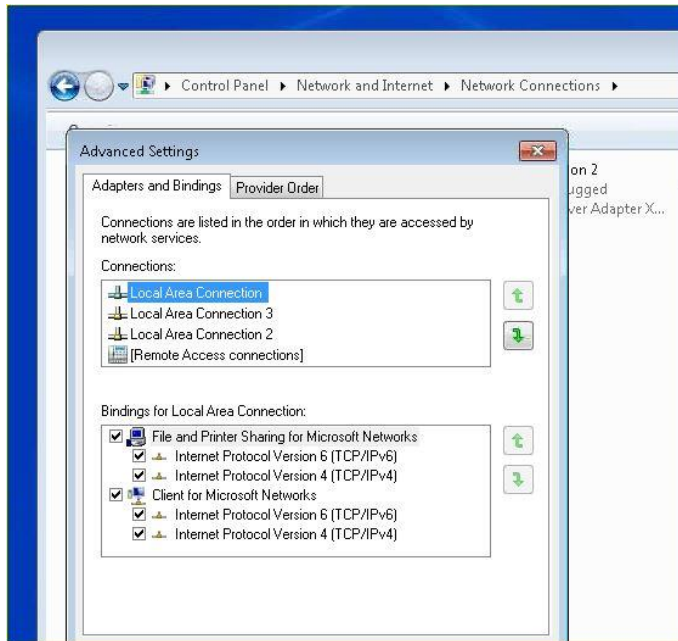
Hold down the magic Alt key to get the Advanced menu item:



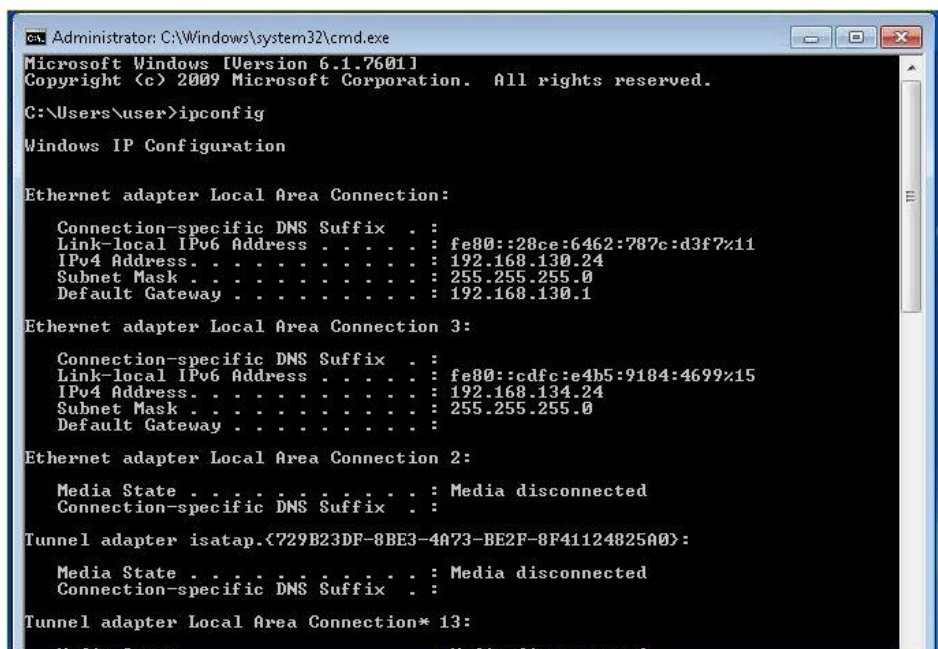
Shift the 1 Gb nic to the top:



I can't connect to a remote RIP on a multi-Aspen system



Now execute ipconfig to check the order:



Note: you need to stop and restart SOAR on the server and the remote RIP boxes. You will also have to restart license manager since it's using SOAR to talk to the RIPs, or the other way around.