

Aspen v2 Quick Start

Version 1.1 NPD 8th February 2016. [Master is in SVN.](#)

Overview

These instructions cover installation of an Aspen workflow system comprising two RIPs to drive a single-head Aspen unit using the Aspen v2 device.

They cover:

- Installation of a single-RIP and workflow system on the first PC.
- Duplicating to two RIPs using Multi-RIP Utility.
- Configuring the Navigator workflows.

Steps you need to take are preceded by a checkbox, to allow you to print out this document and check them off as you proceed.

The procedure should take one to two hours.

Preparation

These instructions assume that there is no existing Xitron Workflow installation.

Either for LDK security you will need:

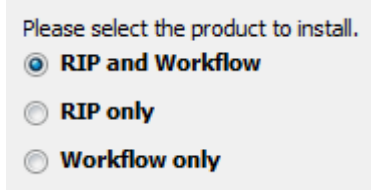
- An LDK Product Key to enable Navigator with Aspen, HDS, HVD and Color Pro.
- A Xitron Navigator Workflow dongle.

Or for HLS security you will need:

- A Xitron Navigator RIP dongle.
- Passwords for HDS, HVD and Color Pro.
- A Xitron Navigator Workflow dongle.
- A password to enable the Aspen v2 in the printer plugin against the Workflow dongle.

1. Installation

- ☐ Start the installer (NavigatorInstaller.exe).
- ☐ Accept the License Agreement.
- ☐ Select RIP and Workflow.






- ☐ Enter the Aspen v2 Printer, HDS, ColorPro and HVD passwords when prompted.
- ☐ Enter the LDK key when prompted. (As a result the RIP will be set to use LDK security).
- ☐ On the Destination Folder dialog, select the installation location. It is recommended that you use a unique folder name.

☐ On the Select Program Folder dialog, enter the name for the folder which the installer will make in the Start menu.


☐ Wait for the installation to finish.

2. Configuration

2.1 Start the workflow software

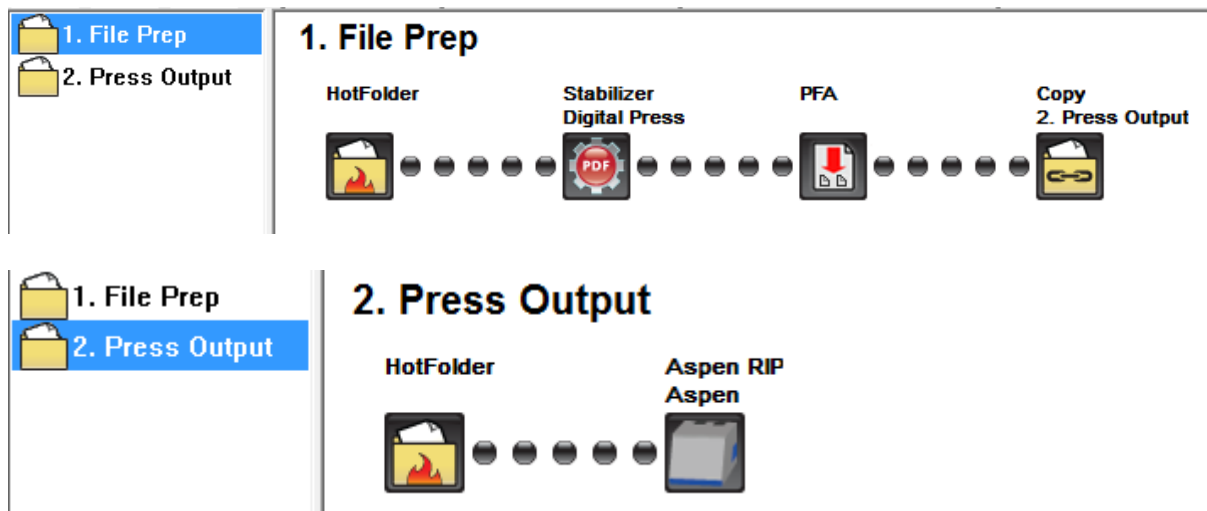
☐ Start the Navigator Server: Start→Navigator→Navigator Server, . The Navigator RIP,  will also run, and this in turn will launch Durango Spooler, .

☐ Allow ten seconds for the Server to settle; then start the Navigator Client:

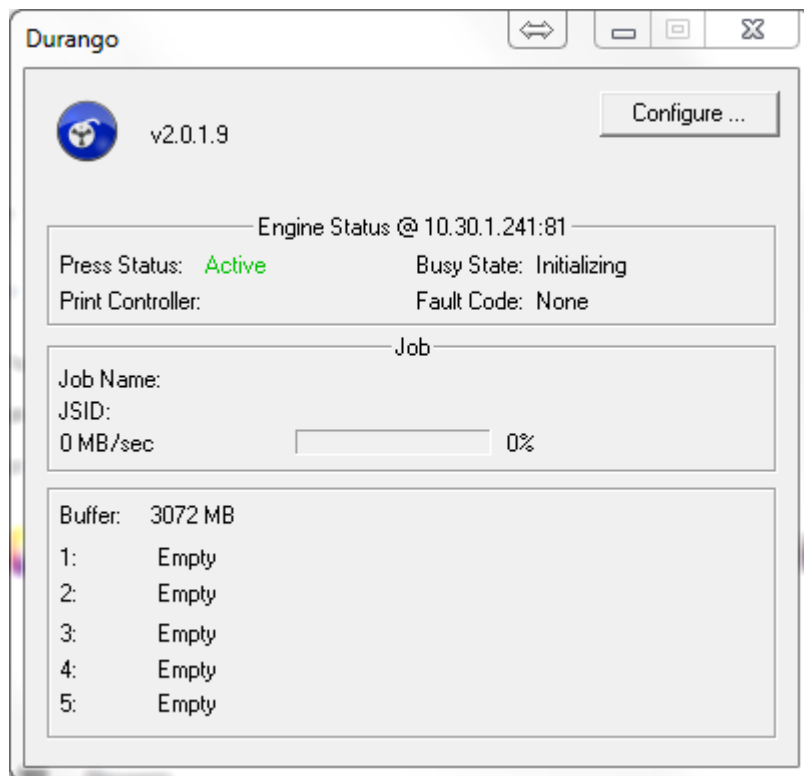
Start→Navigator→Navigator, .

☐ In the Navigator Client, log into the Server as user 'Administrator', with no password. (You can assign one if needed).

The Navigator Client window will show two pre-configured workflows, File Prep and Press Output.



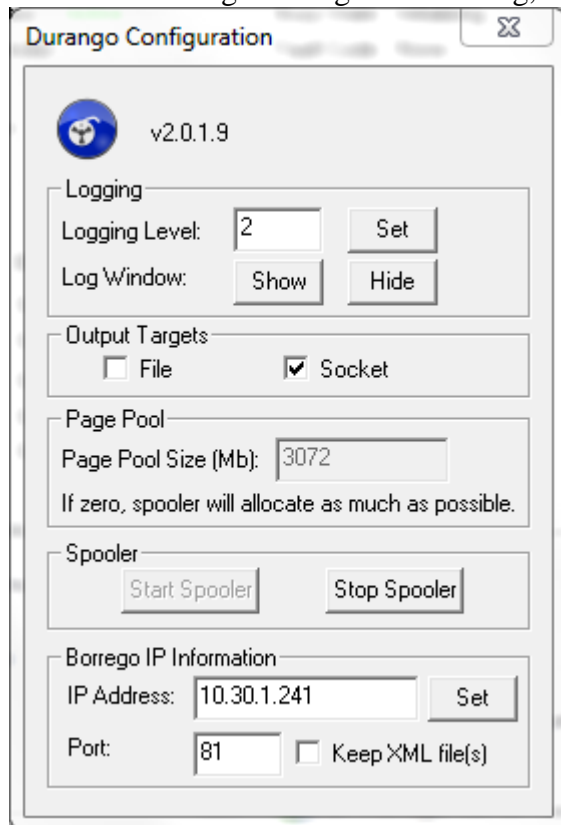
☐ Open the Durango Spooler dialog (click its icon on the Taskbar):



- ☐ Choose Configure... and select 'Yes' on the confirmation dialog.

2.2 Configure the printer network address

- ☐ On the Durango Configuration dialog, ensure that 'Socket' is the selected Output Target.

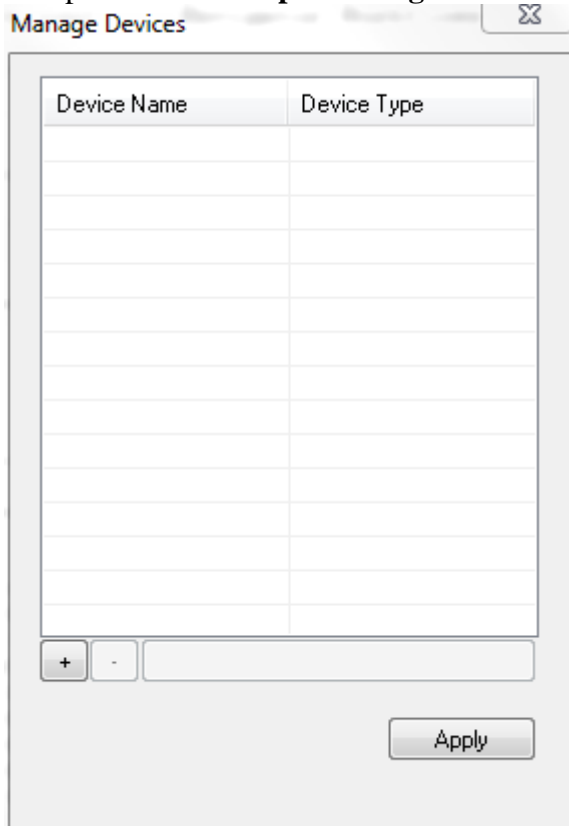


Aspen v2 Quick Start

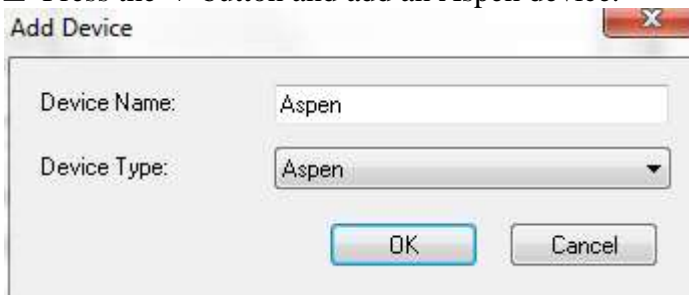
☐ Press the 'Stop Spooler' button if it is available. Enter the IP address and port number of the Borrego, and press 'Set'. Then 'Start Spooler'. Close the Durango Configuration window, and leave Durango running (if you minimize it, it will not be shown in the Taskbar and can be found in the System Tray).

☐ **Log into Navigator Server**, Server Setup→Administrator Login... User Name 'Administrator' with no password (you can configure one).

☐ Open **Server Setup→Manage Devices...**,

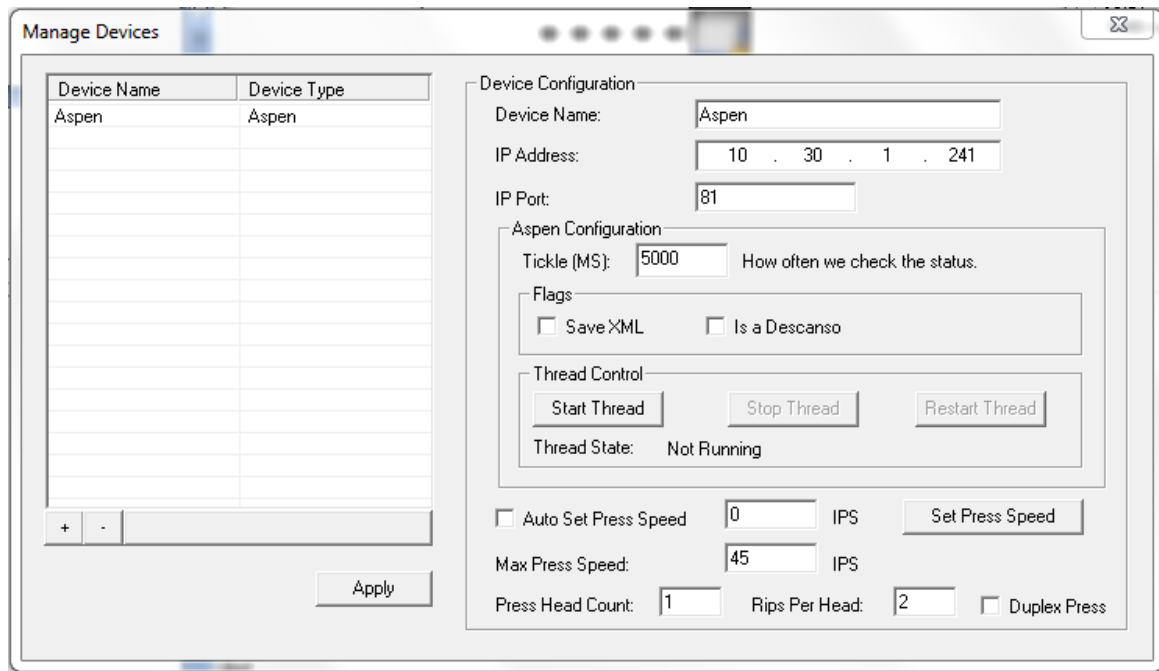


☐ Press the '+' button and add an Aspen device.



- ☐ Configure for Press Head Count=1, RIPs per head=2 (so a total of two RIPs).
- ☐ (If the Press Head Count is more than one, check 'Is a Descanso'.)
- ☐ Set the IP Address and Port number to the same values as the Durango configuration above.

Aspen v2 Quick Start



☐ Make sure to press 'Start Thread' and then 'Apply' or the changes will be lost; then close the Manage Devices dialog.

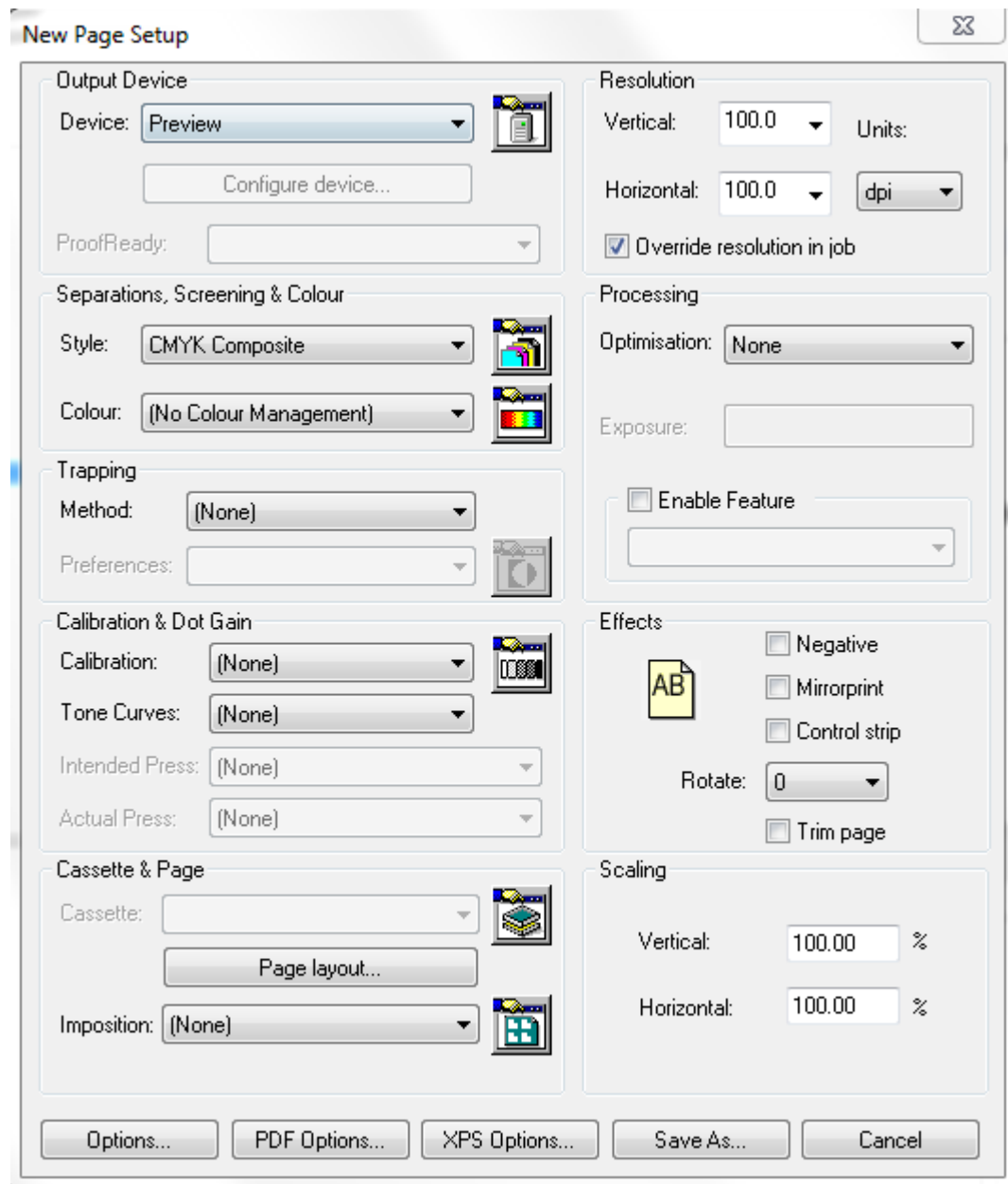
There is no need to configure the Aspen device in the Navigator RIP, Navigator->Device Manger... as an Aspen device will already be present. Although this has an Address field, this may be left empty.

☐ In the RIP's Preview menu, choose 'Select Device...'.


☐ Select Aspen v2. The menu previously named 'Preview' will now be named 'Aspen v2' and can be used to access settings for the Aspen v2 device. The defaults will be fine for this setup.

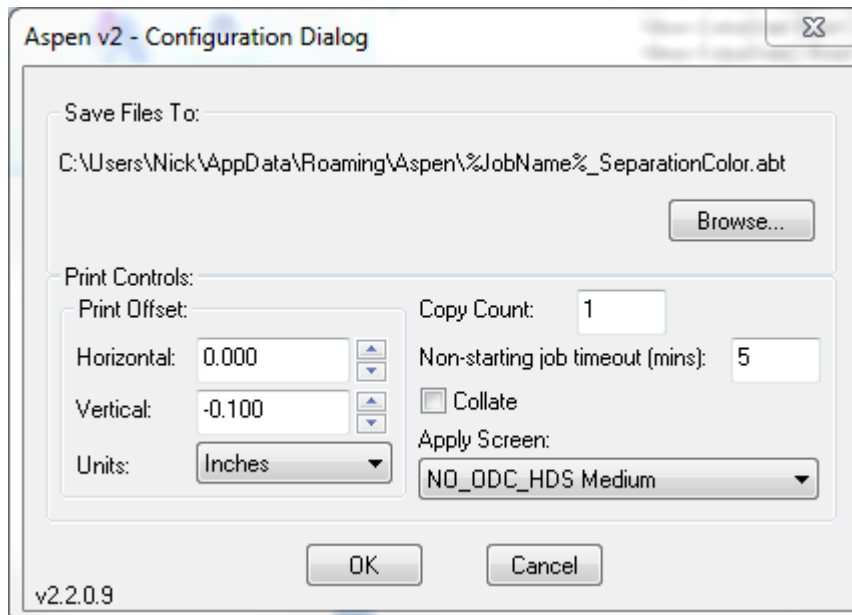
☐ Select Navigator→Page Setup Manager...

☐ Press New... to make a new Page Setup.

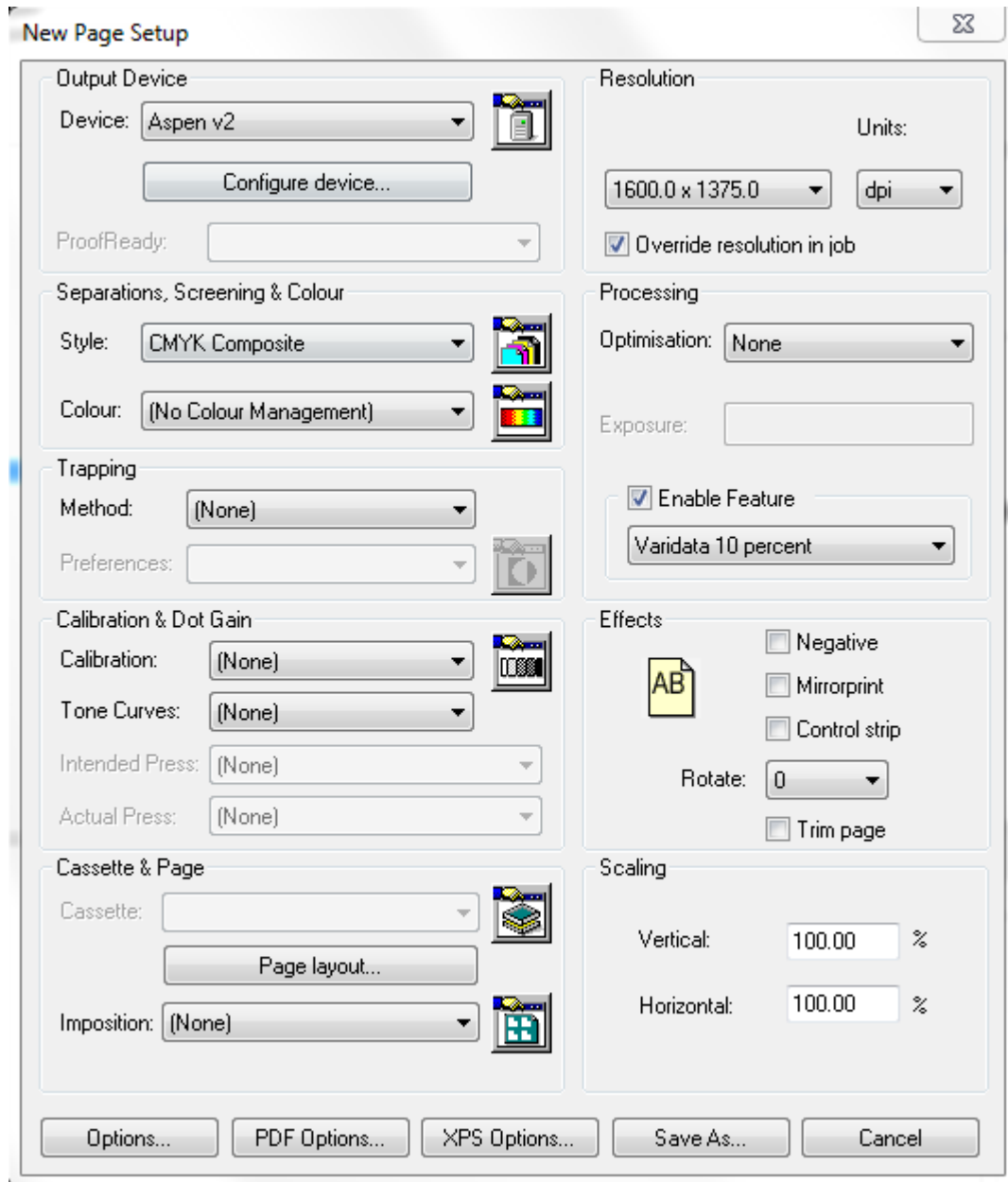


□ In the Device field select Aspen v2. Press Configure device... and check that a Vertical Print Offset of -0.1 Inches is specified. In the Apply Screen menu select NO_ODC_HDS Medium and press OK.

Aspen v2 Quick Start



- ☐ In the New Page Setup select Style CMYK Composite.
- ☐ Select Enable Feature and select Varidata 10 percent.



- ☐ Press Save As..., and save this Page Setup as Aspen v2.

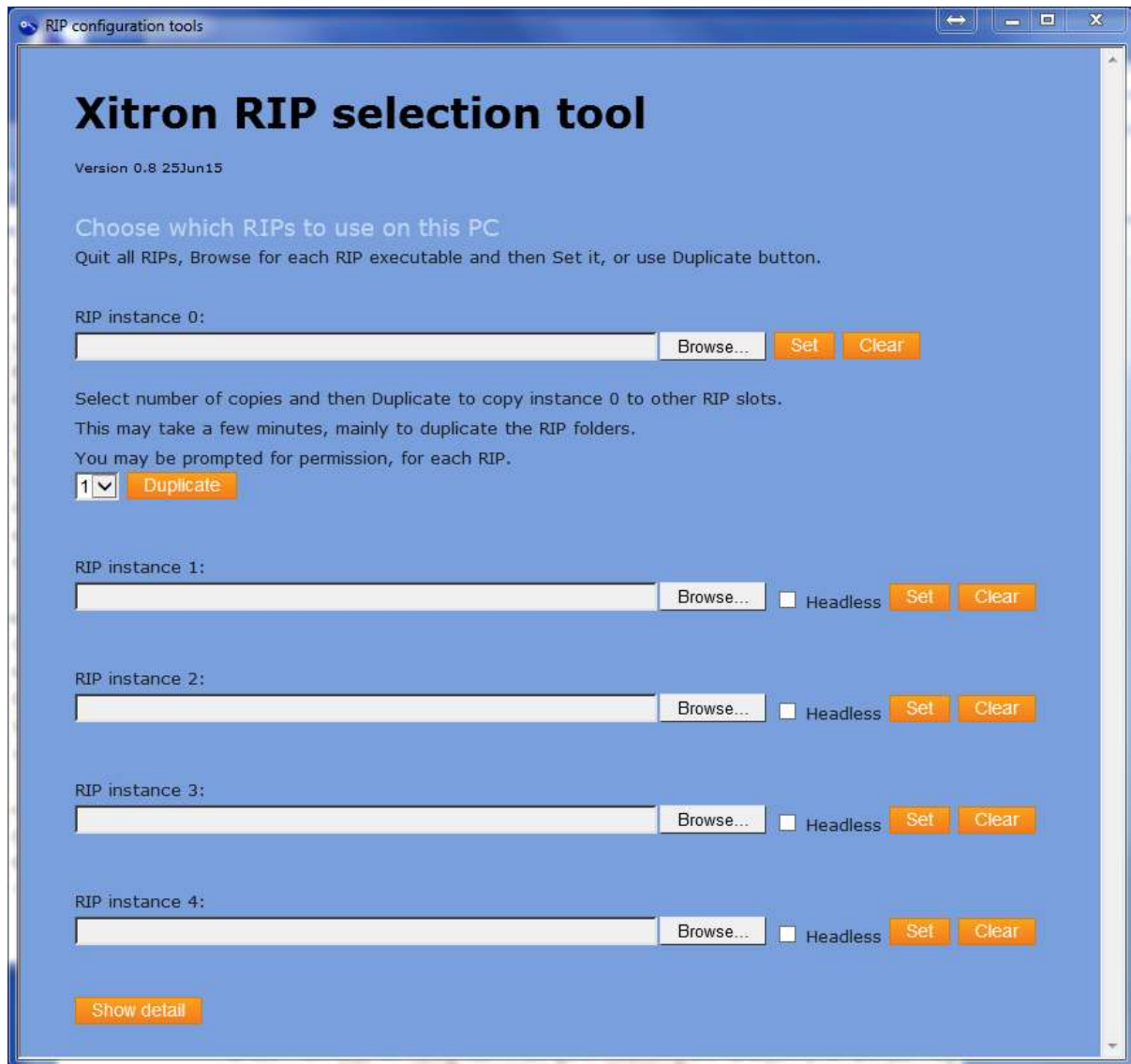
2.3 Duplicate the one RIP to two

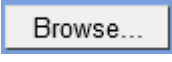

Multiple RIPs on the same PC have unique instance numbers to identify them.

At the moment we have one RIP, set to instance 0. We need to duplicate this to four RIPs, instances 1,2.

- ☐ Exit Navigator Server and Client. The Navigator RIP and Durango Spooler should also exit.
- ☐ Run the **Multi-RIP Utility** from Start→Navigator→Multi-RIP Utility.






- ☐ Press the top  button for RIP instance 0.
- ☐ Browse to your RIP folder, e.g. C:\Navigator\Navigator 10.1r2
- ☐ Select Xitron.exe.
- ☐ Press  for RIP instance 0.
- ☐ Select 2 for two RIPs and press Duplicate.

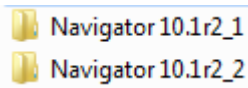


- ☐ Dismiss the warning about existing RIPs being overwritten. Your RIP instance 0 will be duplicated to instances 1,2; this will take a few minutes.

You might see a 'Stop running this script?' warning; if so, select 'No'.

- ☐ Finally, we need to  RIP instance 0, otherwise it will be started when Navigator Server starts. The RIP itself is not deleted, so you can duplicate from it in future if necessary.
- ☐ When the Clear operation has finished, close the Multi-RIP Utility.

In the Navigator folder we now have two new RIP folders named like this:

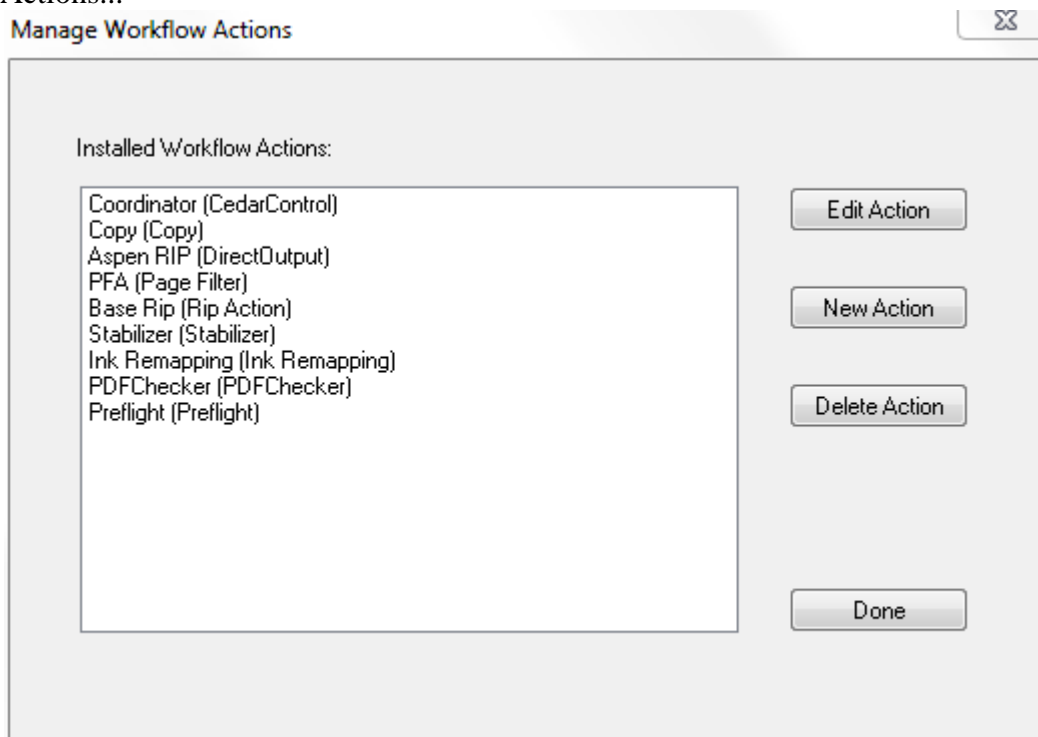


There will now be two new shares, 'xipgb1' and 'xipgb2', one each for the RIPs' PGBDIRs (pagebuffer directories).

- ☐ Start Navigator Server again. Two Navigator RIPs and one Durango Spooler will start.
- ☐ Start Navigator Client and log into the Server as Administrator.

2.4 Add RIP Actions to Navigator Server

- ☐ Log into **Navigator Server** as Administrator, select Server Setup→Manage Workflow Actions...

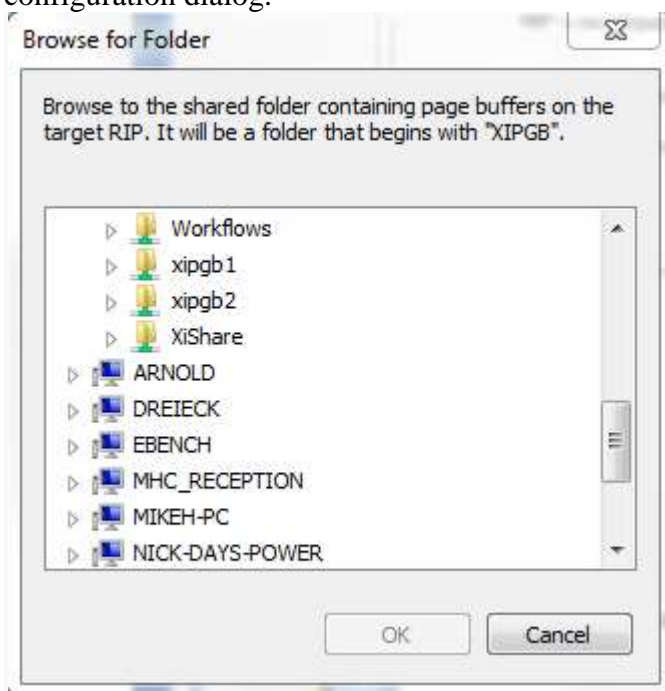


The naming convention is to have the SOAR RIP Actions and Direct Output Actions' names end with _<platform number><RIP instance number>, for instance _21.

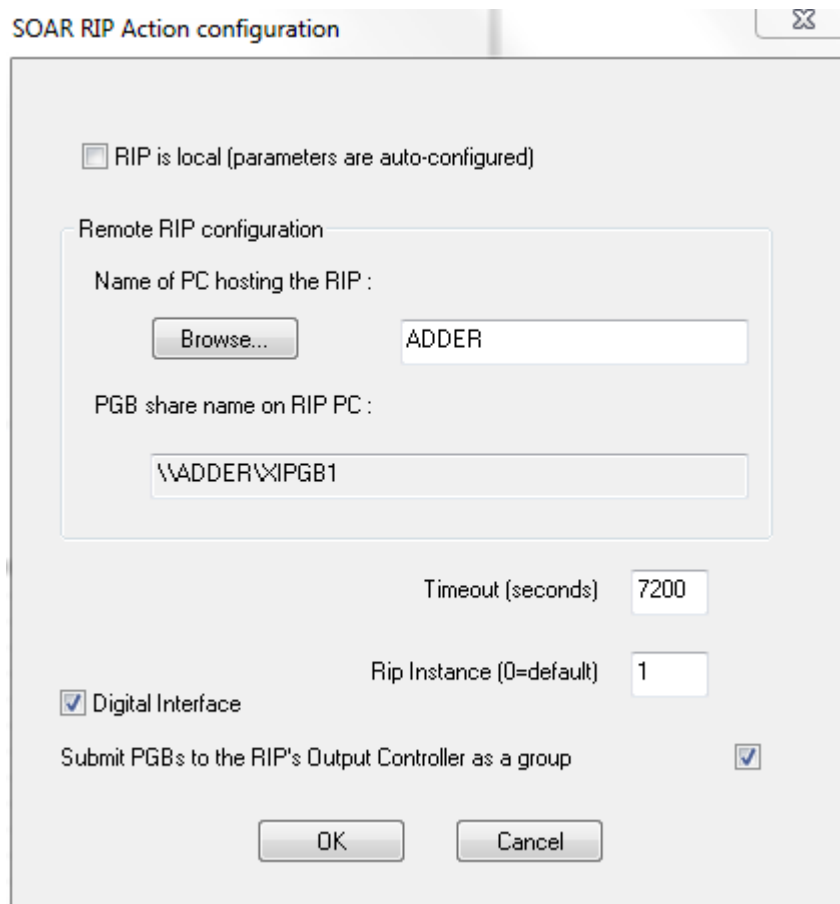
- ☐ Create two RIP Actions named RIP_11, RIP_12.



☐ For each, uncheck the 'RIP is local' flag and point the RIP Action at the respective pagebuffer share for the RIP (xipgb1 or xipgb2) and set the instance number in the RIP configuration dialog.



☐ Check the 'Digital Interface' checkbox.

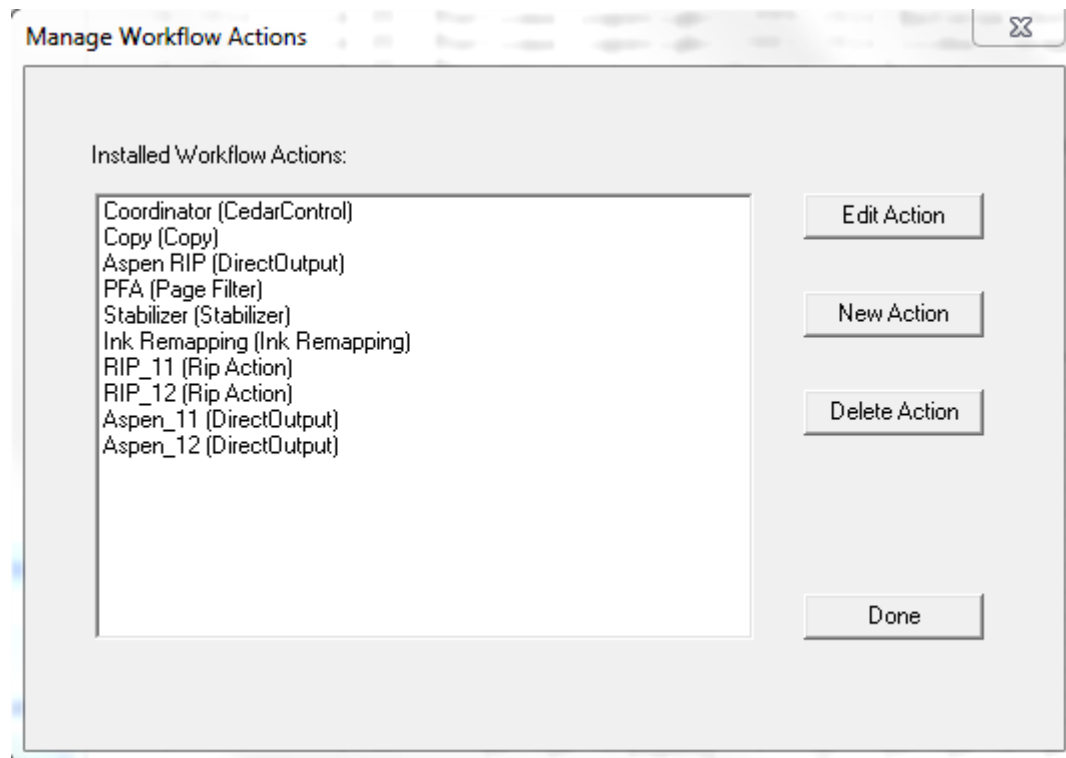


- ☐ Highlight the existing Base Rip (Rip Action) and select Delete Action.

2.5 Add Direct Output Actions to Navigator Server

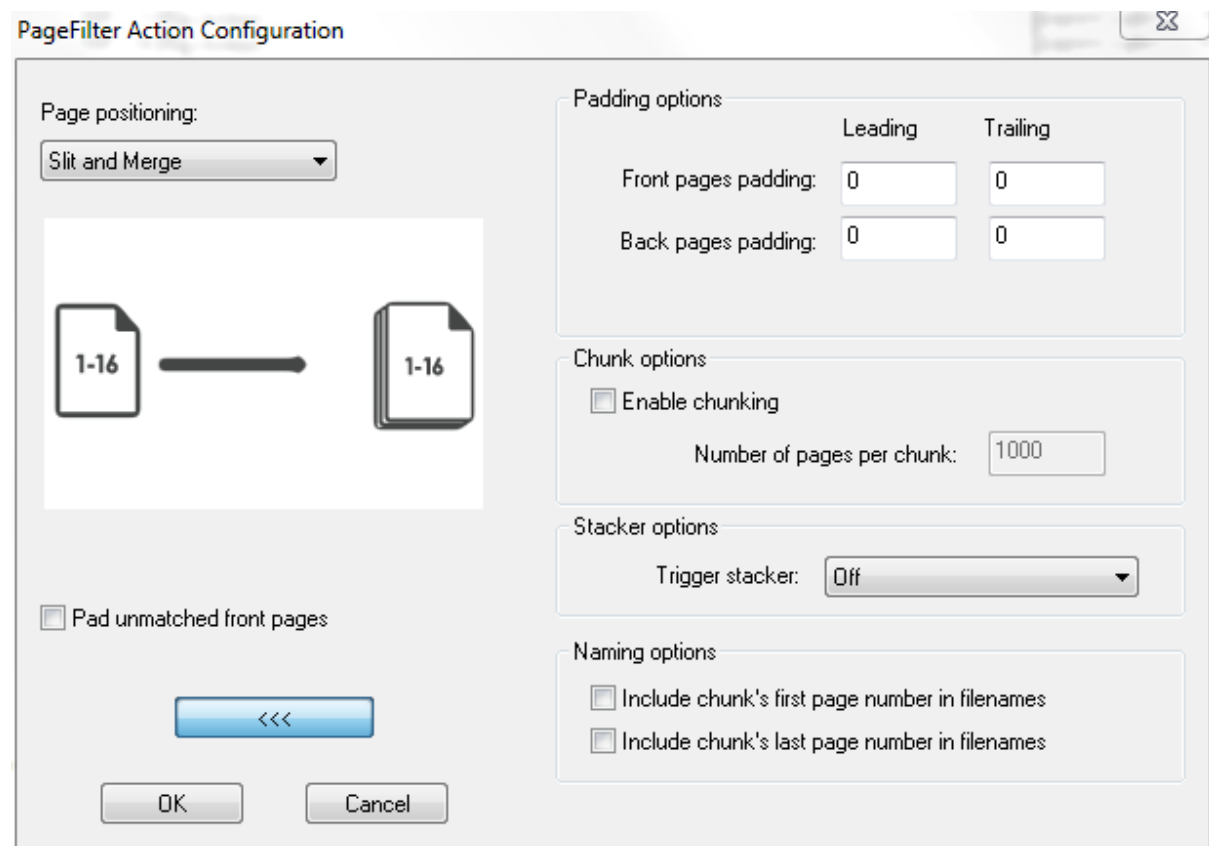
- ☐ In **Navigator Server**, create two Direct Output Actions. Name them Aspen_11 ... Aspen_12.

The final result is like this:



2.6 Configure the Page Filter Action

- ☐ In **Manage Workflow Actions** dialog, edit the PFA (Page Filter) Action; press Configure.
- ☐ Press the '>>>' button and uncheck the Enable chunking checkbox.



- ☐ Click 'OK', 'OK', 'Done'.


2.7 File Prep workflow in Navigator RIP Manager

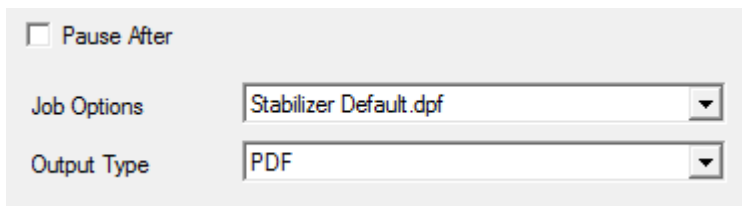
There should already be a **File Prep** workflow containing

Hot Folder → Stabilizer Action → Page Filter Action → Copy Action.

This is the workflow to which PDF jobs will be submitted.

The Copy Action will have "Expand Group File to Multiple Jobs" checked.

- ☐ Use the Wrench button,  to edit the File Prep workflow.
- ☐ In the Stabilizer tab, Job Options, **select** Stabilizer Default.dpf.



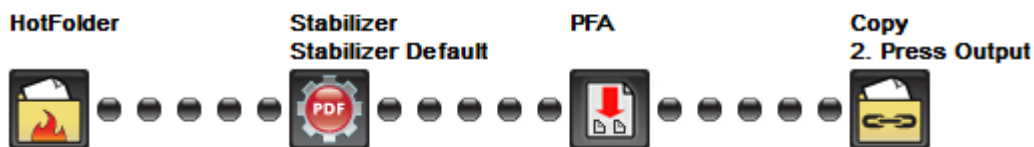
☐ Pause After

Job Options: Stabilizer Default.dpf

Output Type: PDF

- ☐ Press the Wrench again to exit workflow edit mode.

1. File Prep




2.8 Press Output workflow in Navigator RIP Manager

There should already be a **Press Output** workflow containing

Hot Folder → Direct Output Action.

RIP Page Buffering will already be set to to 'Single if required'.

- ☐ In **Navigator Client**, edit the Press Output workflow via the Wrench button, , delete the existing Aspen RIP Direct Output Action (right click it; Delete Step)
- ☐ Add two Direct Output Actions, Aspen_11 and Aspen_21 the second beneath the first, in a branched workflow.

These should look like this



Aspen v2 Quick Start

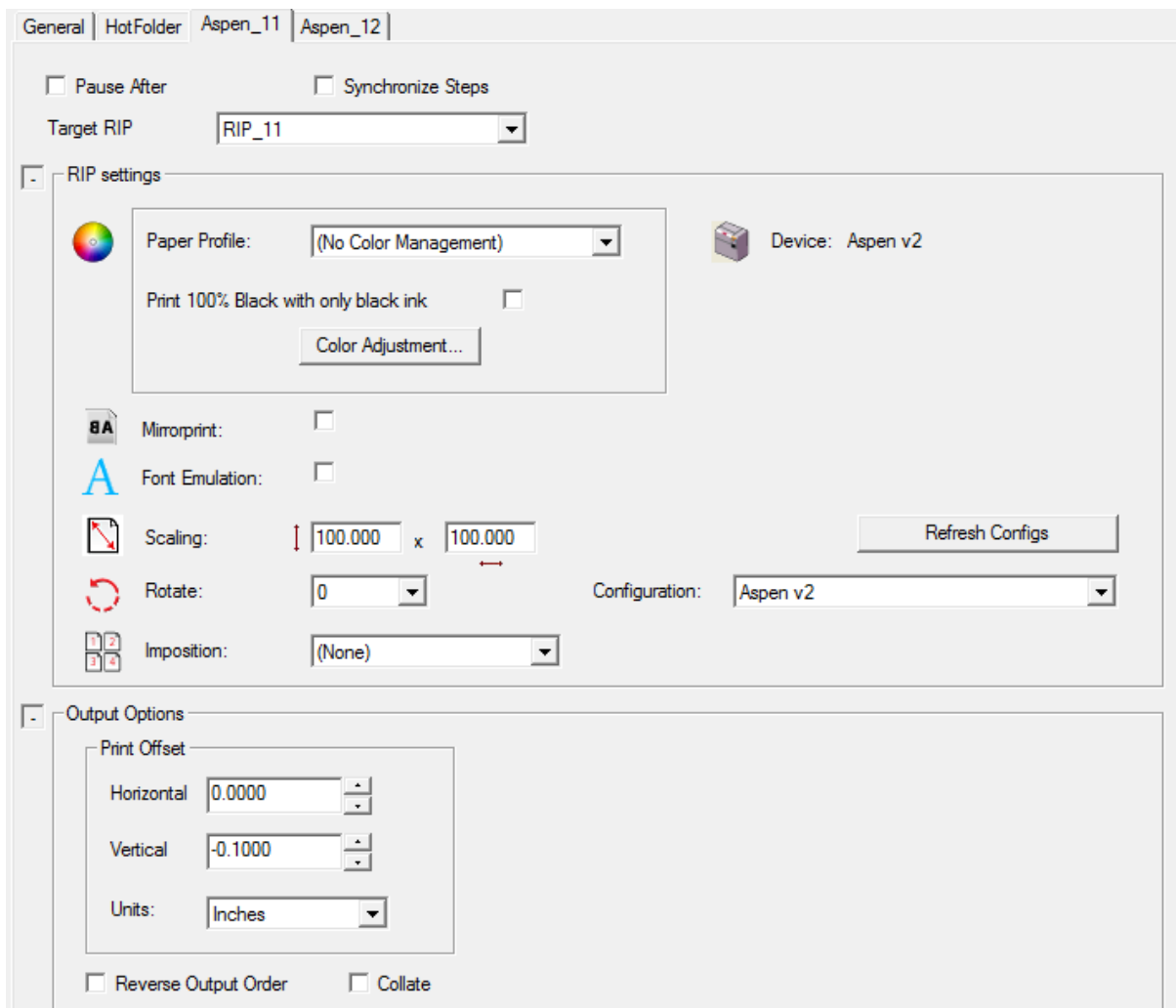
not like this



which indicates that the Durango Spooler cannot see the printer. (If you are setting up without a printer present, a Fake Borrego must be running at this point for the device to be ready.)

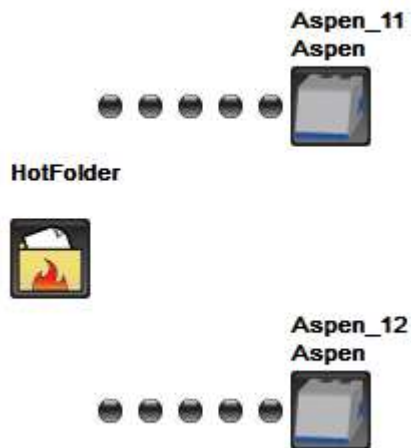
- ☐ In the tab for each Direct Output Action, select the target RIP, as RIP_11 and RIP_12.
- ☐ In each Aspen tab, select Refresh Configs. Select Aspen v2 as the configuration.

The Direct Output Actions should now look like this:

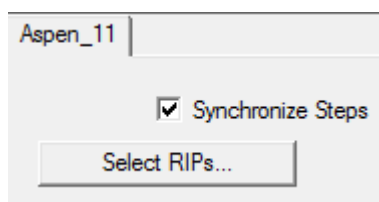
A screenshot of the Aspen v2 configuration window. The window has tabs for "General", "HotFolder", "Aspen_11", and "Aspen_12". The "Aspen_11" tab is selected. Inside the tab, there are checkboxes for "Pause After" and "Synchronize Steps". Below these is a "Target RIP" dropdown menu set to "RIP_11". A section titled "RIP settings" contains a "Paper Profile" dropdown set to "(No Color Management)", a checkbox for "Print 100% Black with only black ink", and a "Color Adjustment..." button. To the right of this section is a "Device" label with a printer icon and the text "Aspen v2". Below the RIP settings are checkboxes for "Mirrorprint" and "Font Emulation". A "Scaling" section has two input fields, both set to "100.000", with a "x" between them. A "Rotate" dropdown is set to "0". An "Imposition" dropdown is set to "(None)". A "Refresh Configs" button is located to the right of the scaling and rotation settings. A "Configuration" dropdown is set to "Aspen v2". Below the RIP settings is a section titled "Output Options" containing a "Print Offset" section with "Horizontal" and "Vertical" input fields (set to "0.0000" and "-0.1000" respectively) and a "Units" dropdown set to "Inches". At the bottom are checkboxes for "Reverse Output Order" and "Collate".

The Press Output workflow should look like this:

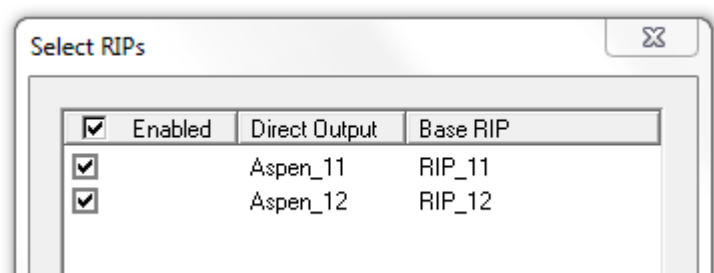
2. Press Output



- ☐ Check the Synchronize Steps checkbox on the Aspen_11 tab. It should now look like this, with the second Direct RIP Output Action tab hidden.



- ☐ Press the 'Select RIPs' button:



- ☐ Press OK. This will merge the two RIPs and show them as one in the workflow, labelled 'x2', like this:



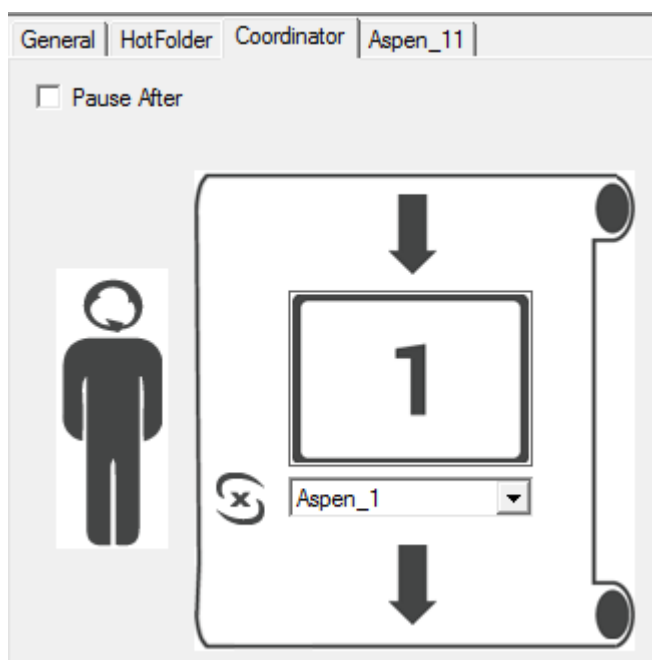
Alternatively, add both Direct Output Actions manually and select the corresponding RIP for each; then check Synchronize Steps to merge them into one.

- ☐ Add a **Coordinator Action** after the Hot Folder Action of the Press Output workflow:

2. Press Output



- ☐ In the **Coordinator Action tab** of the Workflow Editor, set it to use RIP 1 and Aspen 1.



- ☐ Press the Wrench button to exit workflow editing mode.

3. Usage

- ☐ Submit jobs to the **File Prep** workflow by selecting File→New Job... in the Navigator Client, and on the **Press Output** workflow check that they are correctly processed and printed.