



**NAVIGATOR**

---

**Imposition**



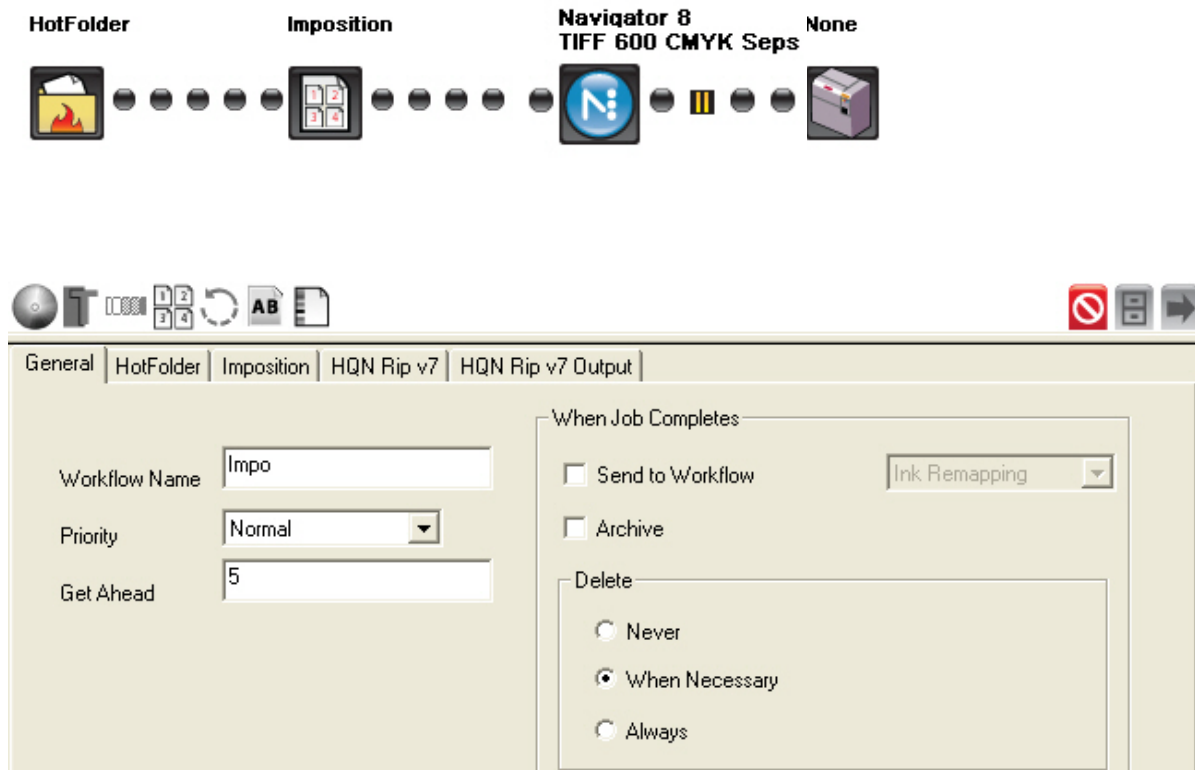
**YOUR BUSINESS. OUR DRIVE.**

---

## INTRODUCTION

The imposition module serves to integrate imposition files into a job's flow. While it was initially designed to work with Dynagram's InPO2, it also can be made to work with a variety of PDF imposition applications. The module works in any workflow, in front of the RIP, as shown below. You can have optional workflow actions in front of the imposition module as well. (e.g. Preflight or Ink Remapping)

### Impo



The imposition module functions to incorporate imposition files with the rest of the job so that all aspects of the job are stored, accessed, processed, and archived together. When used with InPO2, it integrates imposition as a workflow step occurring from within the Navigator client. When used with other PDF imposition applications it integrates imposition files from external applications so that the imposition is stored with the customer-supplied single-page files within the job's workflow.

## INTEGRATION WITH INPO2

Some configurations of Navigator GPS will come with InPO2 version 3 or later. InPO2 requires Adobe Acrobat.

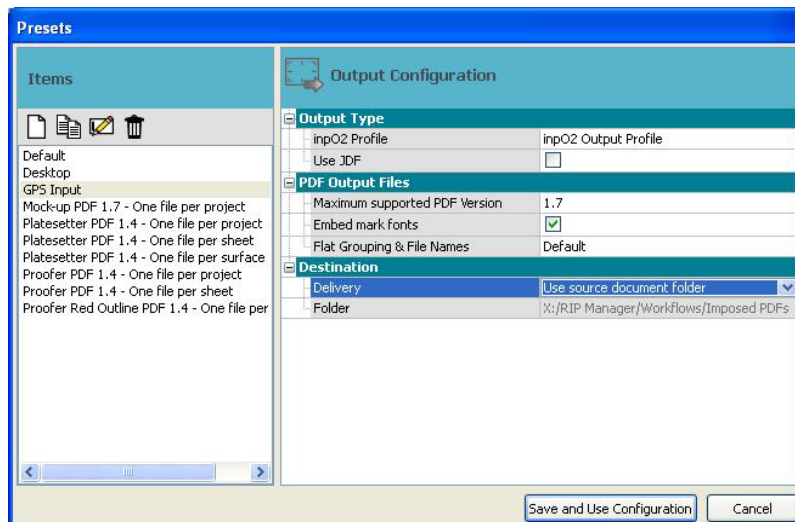
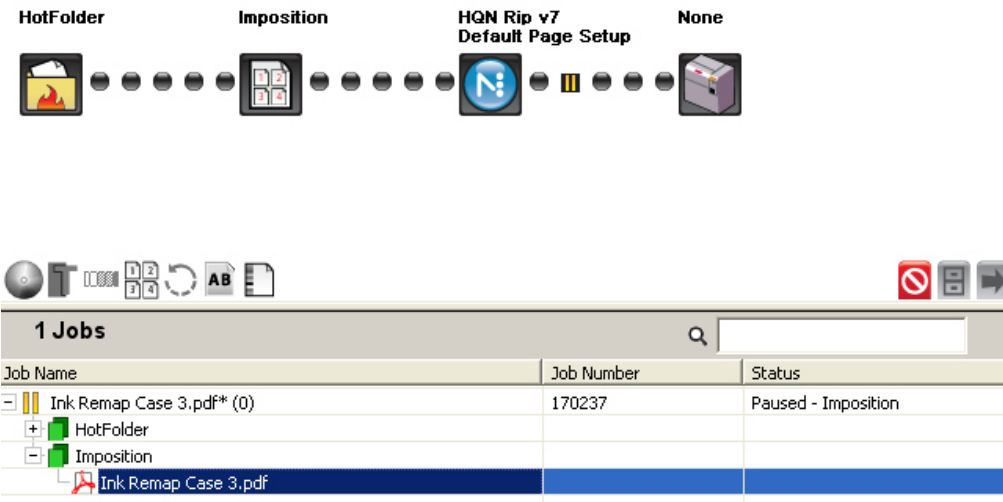
InPO2 and Navigator are designed to work together. Integration is simple and, once configured, becomes quite fluid and automatic.

This document will show how to get running with the InPO2 Wizard. See the InPO2 documentation for more detail or for help with the InPO2 Layout Editor. This document should get you started.

To set them up initially, install InPO2 on your desired client computers. (Computers with Navigator Client installed on them) License them appropriately.

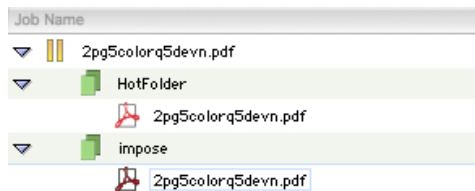
Build a workflow such as the one seen below.

### Impo

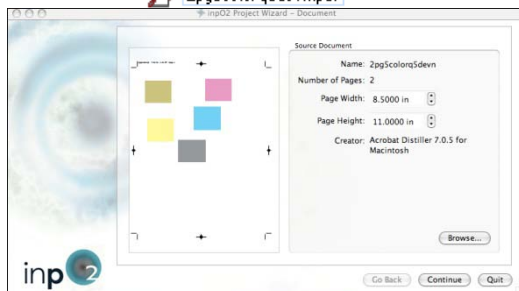


InPO2 has “Output Configuration” presets. In Acrobat there is a menu item called “InPO2”. Under that choose “Add/Edit Presets” and then “Output Configurations”. In order to integrate with Navigator GPS you must set each InPO2 on your network to “Use source document folder”, as shown to the left. Create a new output configuration and name it something memorable.

## A QUICK RUN THROUGH A JOB WITH INPO2

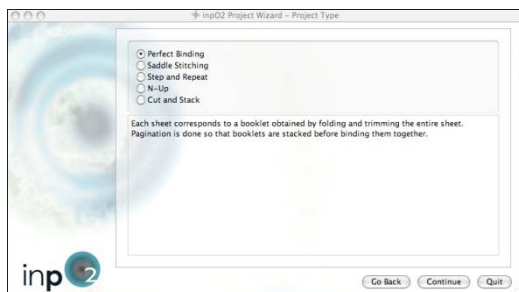


A sample job to be imposed. Double-click the imposition file to open the job for imposition.

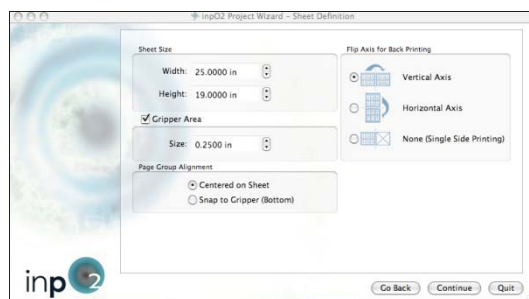


Start the Wizard by going to the “File” menu and choose “Create InPO2/Use the Wizard”

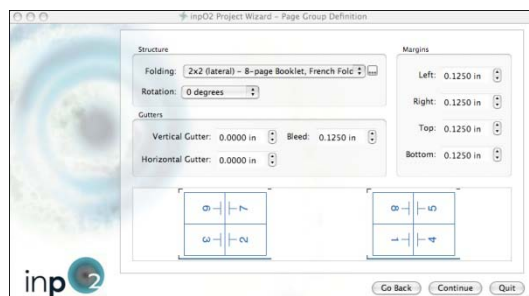
InPO2 Wizard step one.  
Page trim size.



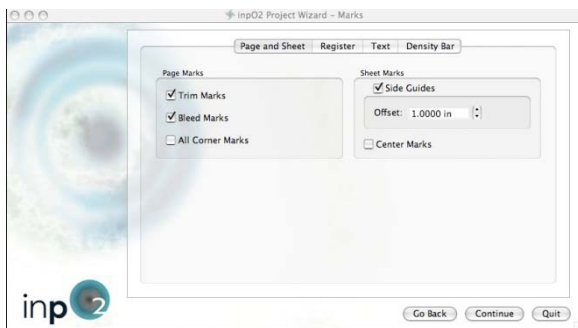
Step two. Choose a binding type.



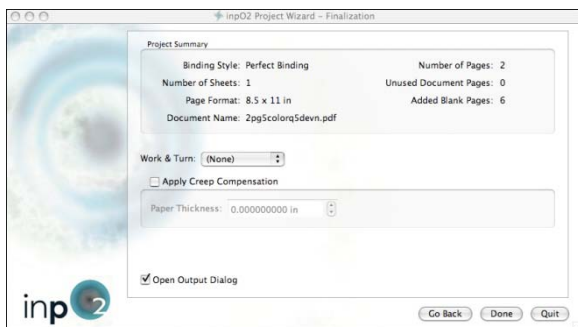
Step three. Sheet definition.



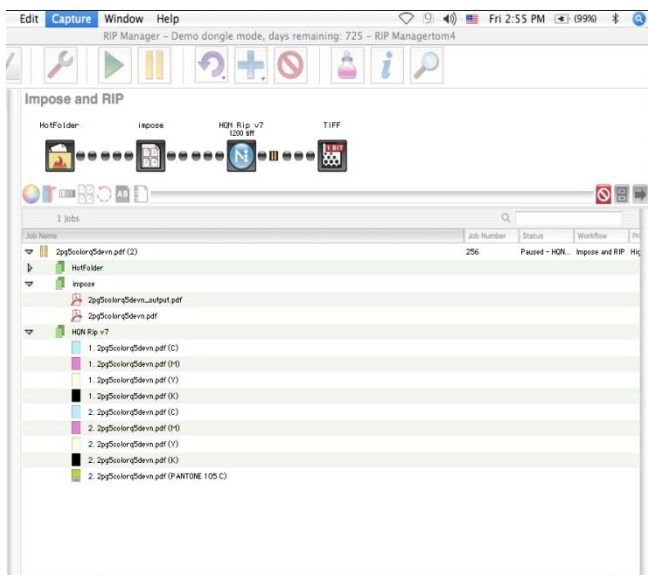
Step four. Page group definition.



Step five. Marks.



Step six. Finalize the imposition.



The imposed job in the workflow view.

Because of your properly configured output preset the impositions will automatically flow back to the job in Navigator. Release it to the next step to RIP and preview or output the imposed job.

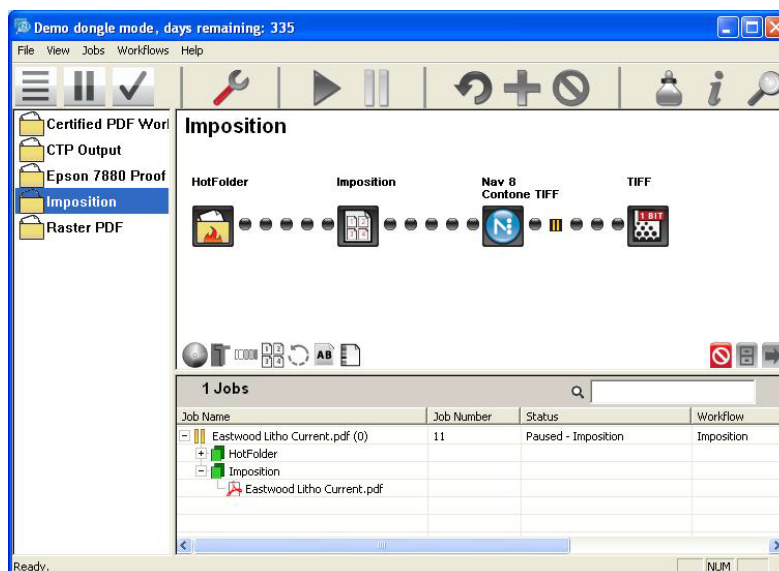
## INTEGRATING WITH PREPS

If you use Preps for imposition, you may still incorporate imposition files into your workflow with our Imposition workflow action.

Do not double click our imposition file from the client to impose.

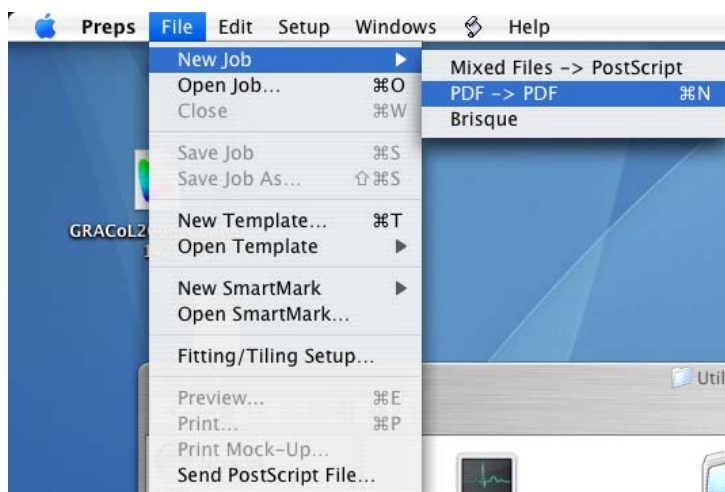
Instead, add it to your Preps imposition in the normal way. You need to be able to navigate to this file within Preps.

To begin, send a job to the workflow to prepare it for imposition. You may perform other actions prior to the imposition step (ink remapping, postscript to PDF file conversion, preflight).

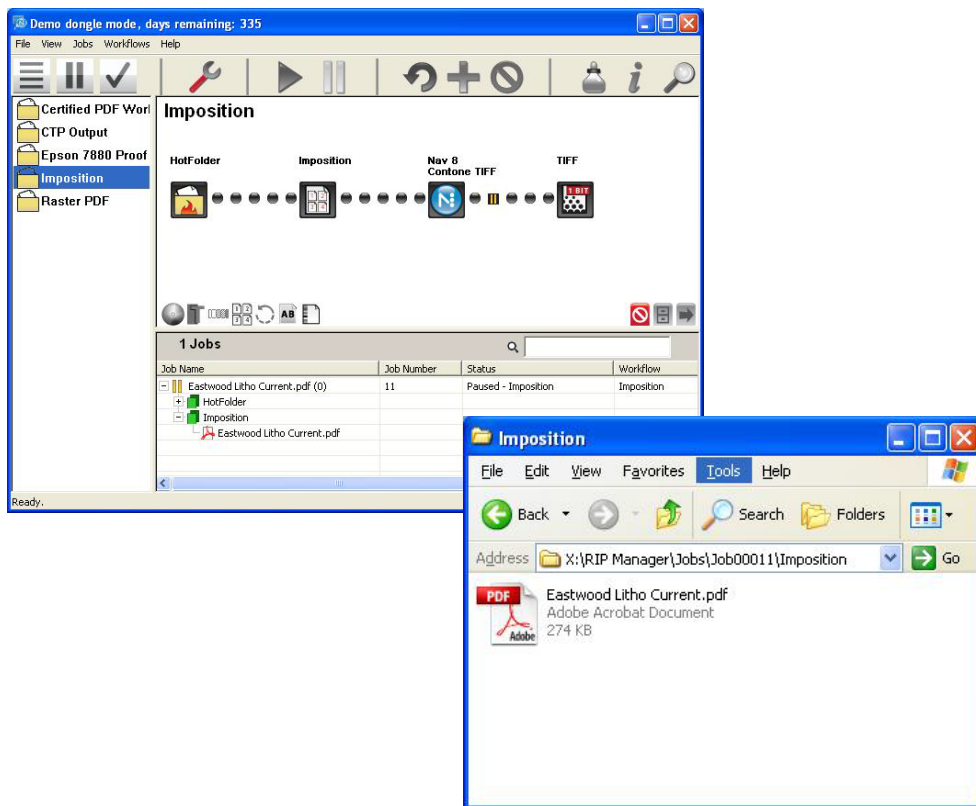


When the job reaches the imposition stage, it creates an imposition file and exports it to a folder in the "Jobs" share. This share will be mounted on any client computer.

In Preps, create a new PDF-> PDF job.

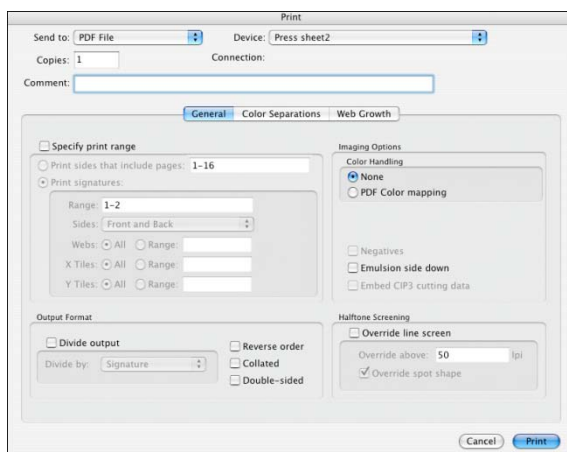


The job structure on disk is important to understand. The two windows below are views of the same job. The client window shows the imposition file for job number 11. The Operating System window shows the same file. It is this file that must be imported to your imposition software.



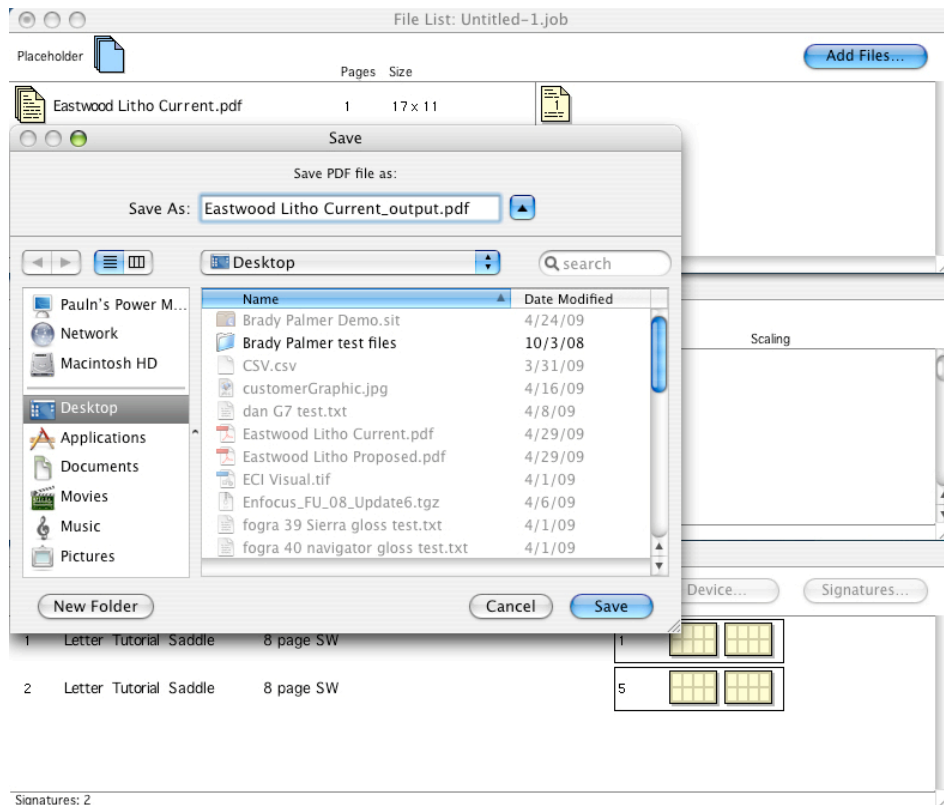
Do the imposition in the manner that you desire. To export the imposition back to the workflow three things are important: file format, file name, and location.

File format: The Preps print output page should look similar to the screen capture below:

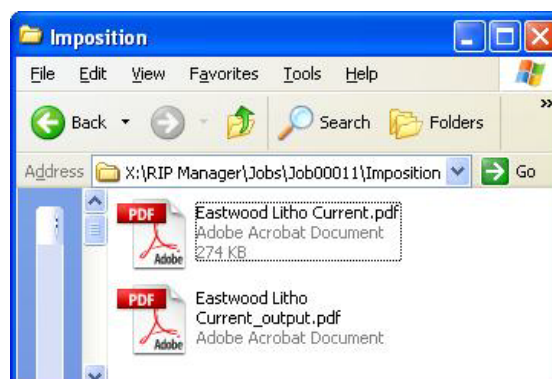


Choose "Send to PDF File". Multiple PDF files for one job is currently not supported. You may not "specify print range" as this results in multiple PDF files. Neither may you "divide output" for the same reason. Other selections on this page are optional and will not affect integration.

The file name must be equivalent to the name of the file imposed with one addition to signify that it is an imposition file. e.g. A file called “Eastwood Litho Current.pdf” may be imposed and the imposition file should be called “Eastwood Litho Current\_output.pdf”. It is the “\_output” addition that will signify an imposition job to the workflow.

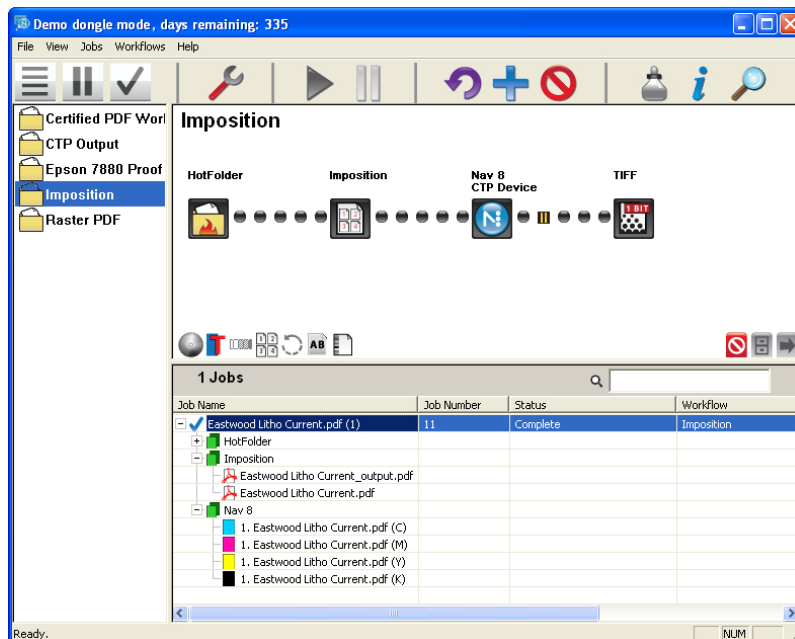


The file must be imported back into the imposition folder for that job. In the case of our example, the Preps imposition file “Eastwood Litho Current\_output.pdf” must be output to the Jobs share in the imposition folder inside the “Job00011” folder.



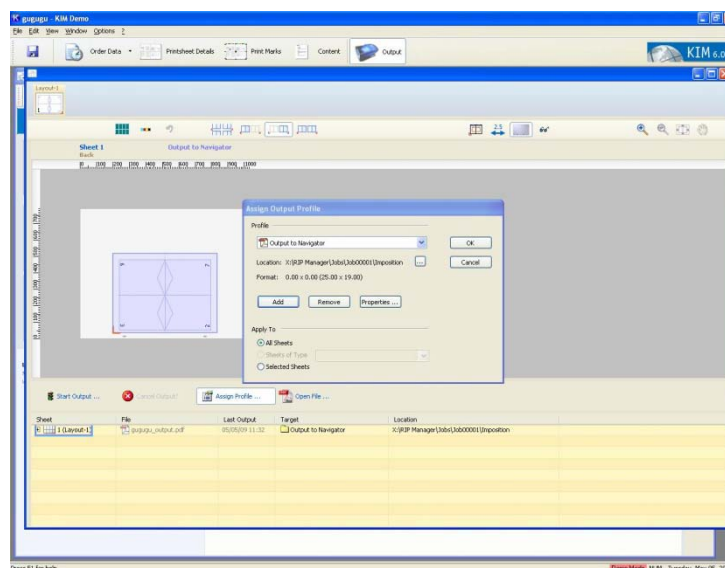


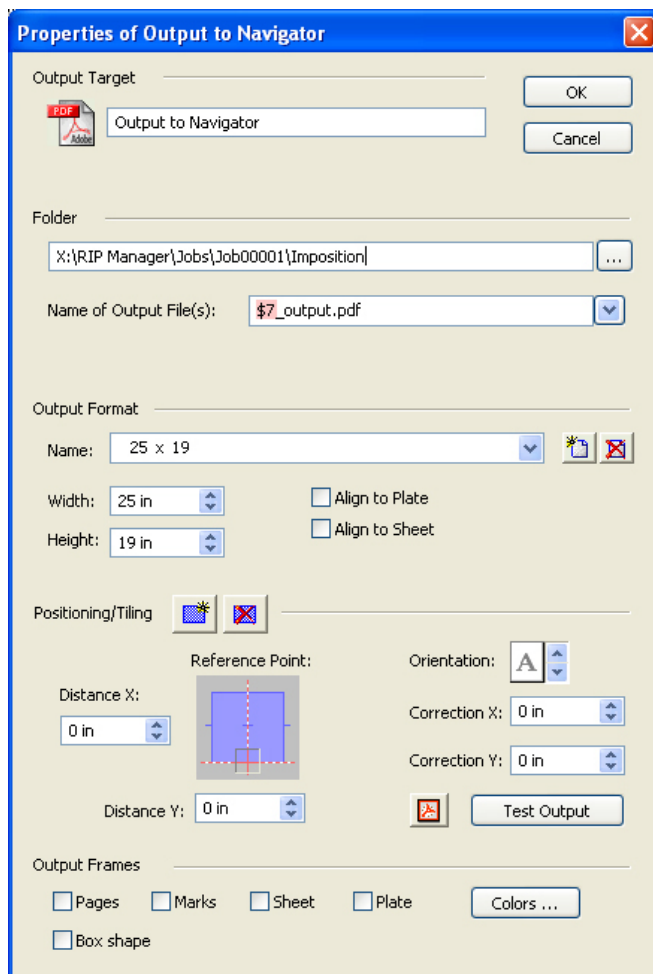
Immediately upon completion of the Preps export you may release the job to the next stage in the workflow. In the example we have released it to the RIP and created Ripped data for the imposed job. This may be previewed or sent to plate, as desired.



## INTEGRATING WITH KRAUSE IMPOSITION MANAGER

The instructions for Preps may be adapted for Krause Imposition Manager. KIM uses output profiles to govern file format, file location, and file name.





The KIM Output Profile can be saved and used each time you output a job. The file name template shown in the screen capture to the right will produce the correct file for Navigator. “\$7” is the KIM notation for “original job name”. So “\$7\_output.pdf” will take a job called “Eastwood Litho Current.pdf” and create an imposition job called “Eastwood Litho Current\_output.pdf”.

The folder entry will need to be changed for each job so that the imposition goes back to the correct job number.

## INTEGRATING WITH OTHER PDF BASED IMPOSITION APPLICATIONS

The instructions for using Preps can be adapted for any application that exports PDF imposition files. The current requirement is for the entire imposition job to be exported as one PDF file. Follow the instructions in the section on Preps regarding file naming and export location.