



NAVIGATOR



SIERRA



XITRON, LLC
4880 VENTURE DRIVE
SUITE 500
ANN ARBOR, MI 48108
WWW.XITRON.COM

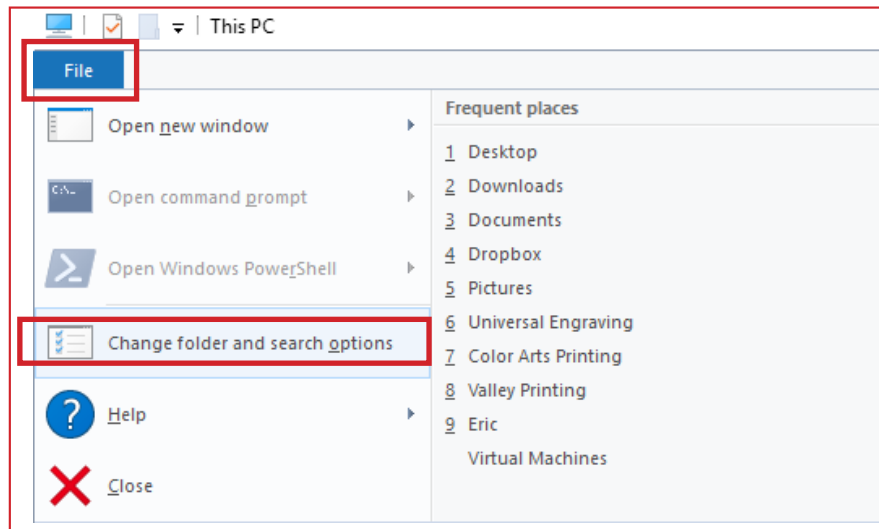
**NAVIGATOR & SIERRA
PRE-INSTALLATION
PLATFORM PREPARATION**

Prior to installing the Navigator or Sierra software, it is important to follow these steps to insure proper functionality. This is an outline that should be followed exactly in Windows 10.

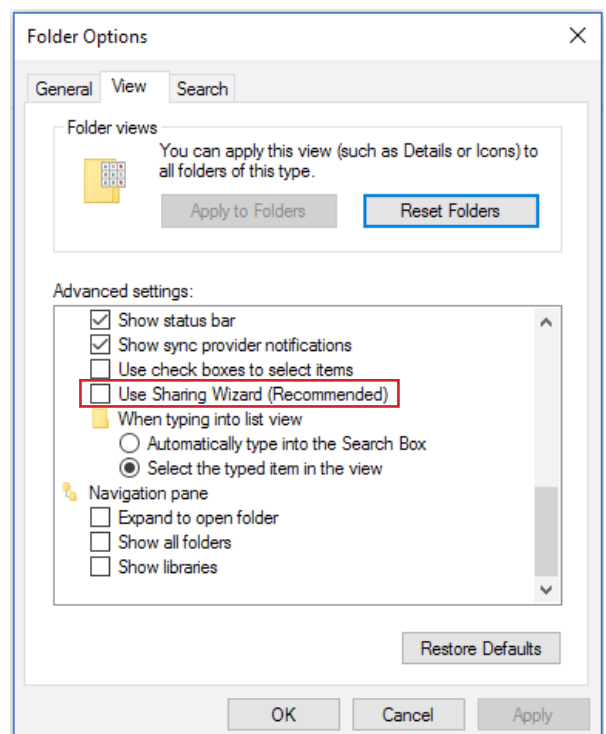
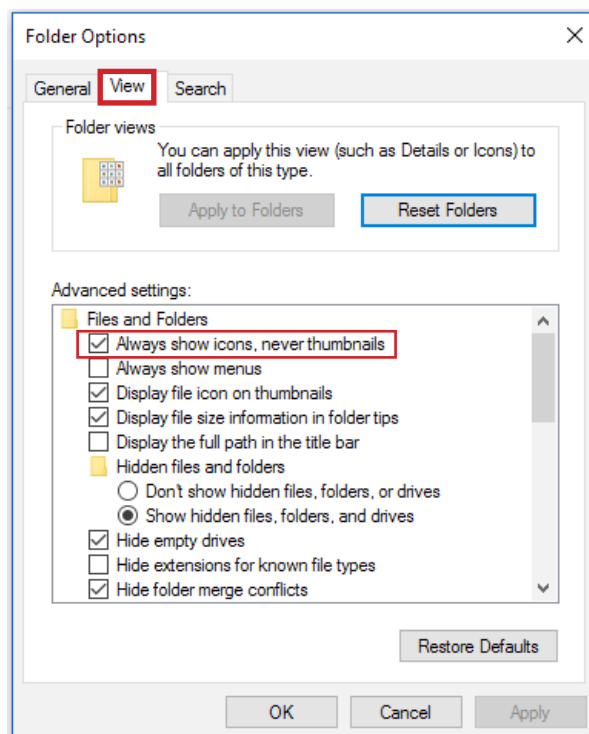
First, we'll configure Folder Options.

In Windows 10, you'll begin by opening a window in File Explorer. This can be done by clicking on your computer, or just pulling open the Documents tab from the Start menu.

Once here, click on the top left-hand 'File' menu, and select 'Change folder and search options'.



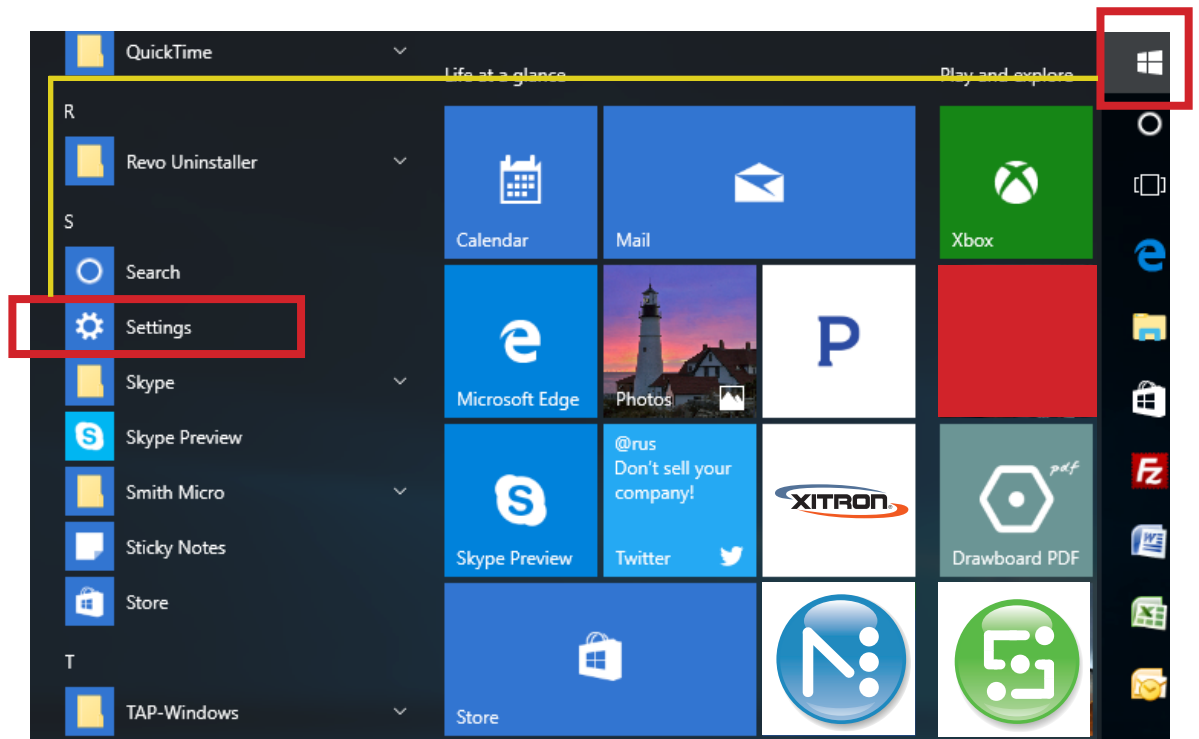
In the View tab, match these selections:



XITRON, LLC
4880 VENTURE DRIVE
SUITE 500
ANN ARBOR, MI 48108
WWW.XITRON.COM

Next, we want to prohibit the computer platform from going to sleep.

Go to Windows > Settings



From here, Click 'System'

Windows Settings

Find a setting



System

Display, notifications, apps,
power



Devices

Bluetooth, printers, mouse



Network & Internet

Wi-Fi, airplane mode, VPN



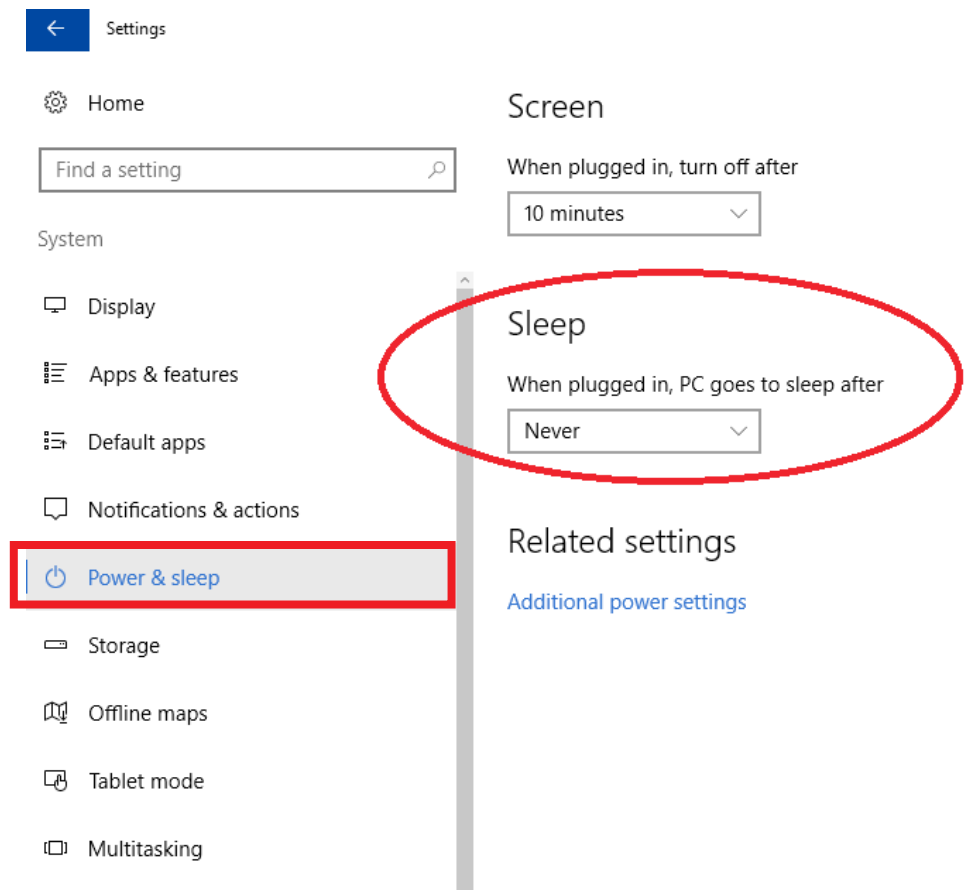
Personalization

Background, lock screen
colors



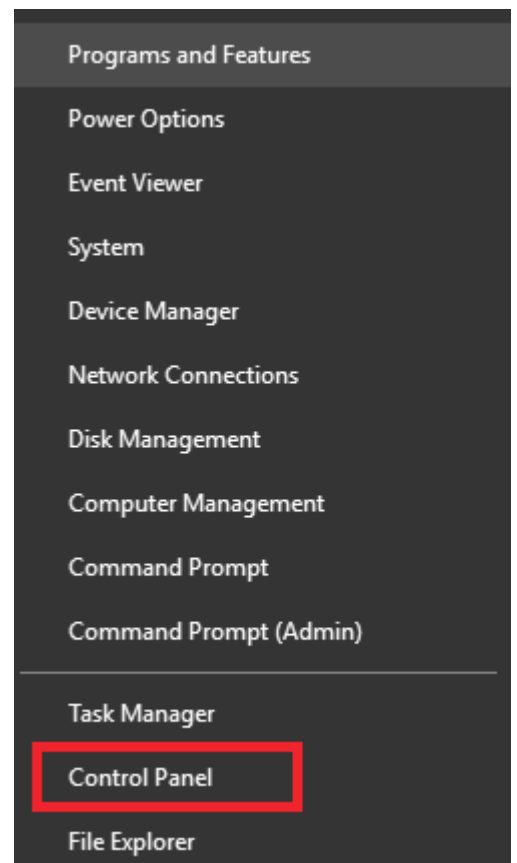
XITRON, LLC
4880 VENTURE DRIVE
SUITE 500
ANN ARBOR, MI 48108
WWW.XITRON.COM

Click to highlight 'Power and Sleep' - change to 'Never'



Open the Control Panel

Right-Click on the Windows Icon
and select 'Control Panel' from
the extended menu



XITRON, LLC
4880 VENTURE DRIVE
SUITE 500
ANN ARBOR, MI 48108
WWW.XITRON.COM

Click on 'Administrative Tools'

All Control Panel Items

Control Panel > All Control Panel Items >

Adjust your computer's settings

Administrative Tools

BitLocker Drive Encryption

Date and Time

Devices and Printers

File Explorer Options

Fonts

Infrared

Keyboard

Mouse

Phone and Modem

QuickTime (32-bit)

RemoteApp and Desktop Connections

Speech Recognition

System

User Accounts

Windows Live Language Setting

AutoPlay

Color Management

Default Programs

Display

File History

HomeGroup

Internet Options

Language

Network and Sharing Center

Power Options

Recovery

Security and Maintenance

Storage Spaces

Taskbar and Navigation

Windows Defender

Windows To Go

Backup and Restore (Windows 7)

Credential Manager

Device Manager

Ease of Access Center

Flash Player (32-bit)

Indexing Options

Java

Mail (32-bit)

Personalization

Programs and Features

Region

Sound

Sync Center

Troubleshooting

Windows Firewall

Work Folders

In the list of tools, find and double-click on the 'Local Security Policy' shortcut

Administrative Tools

File Home Share View Manage

Control Panel > All Control Panel Items > Administrative Tools

Quick access

Desktop

Downloads

Documents

Dropbox

Pictures

Component Services

Disk Cleanup

Local Security Policy

Performance Monitor

Services

Task Scheduler

Computer Management

Event Viewer

ODBC Data Sources (32-bit)

Print Management

System Configuration

Windows Firewall with Advanced Security



XITRON, LLC

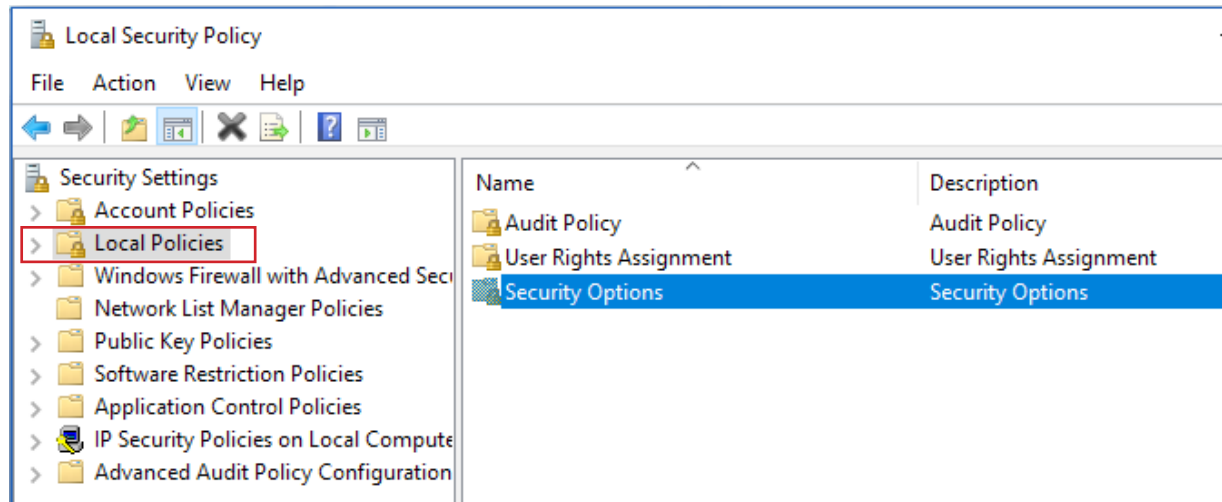
4880 VENTURE DRIVE

SUITE 500

ANN ARBOR, MI 48108

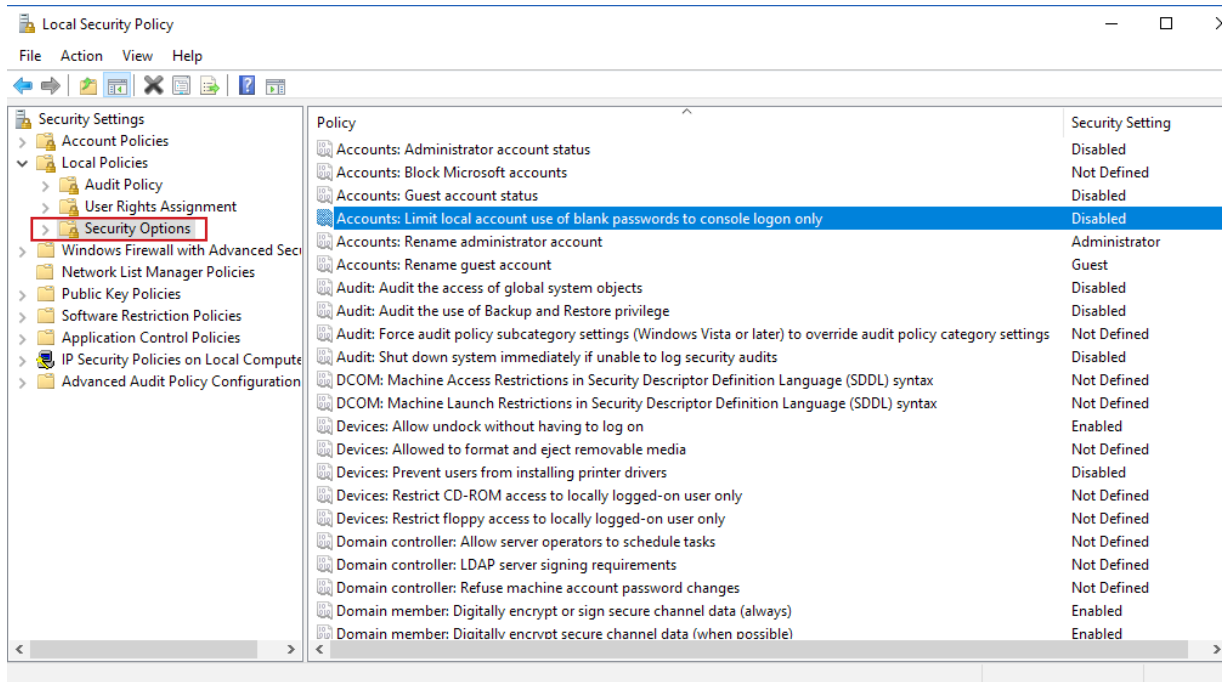
WWW.XITRON.COM

Click 'Local Policies, then double-click Security Options'



Locate 'Accounts: Limit local account use of blank passwords to console logon only'

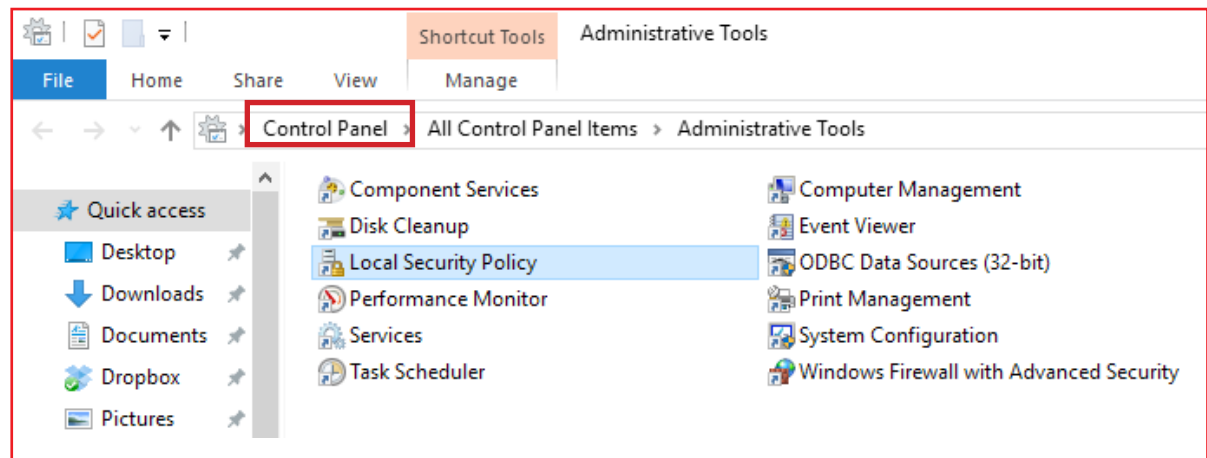
Double-Click to change to 'Disabled'



Close this window

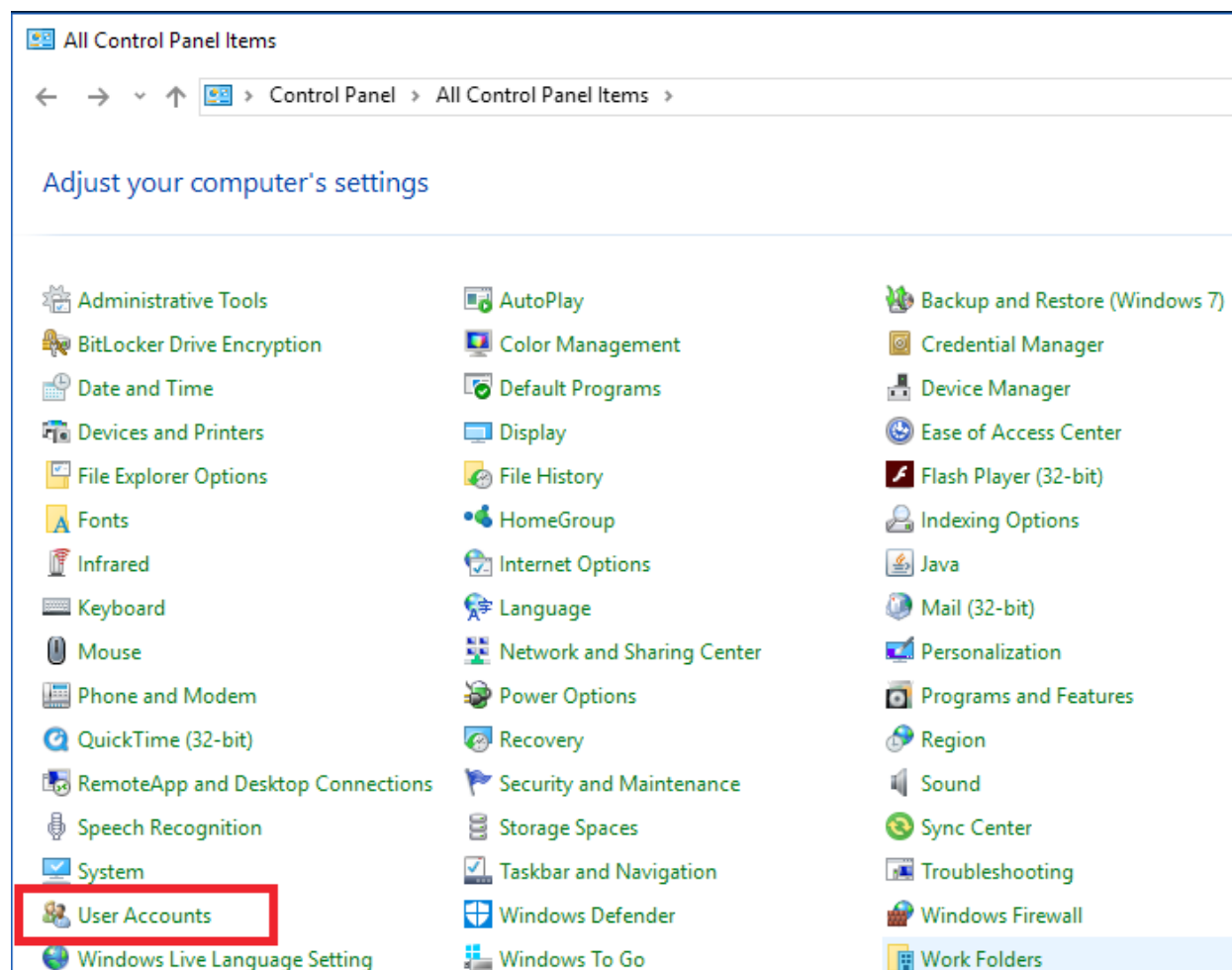


Back to Control Panel



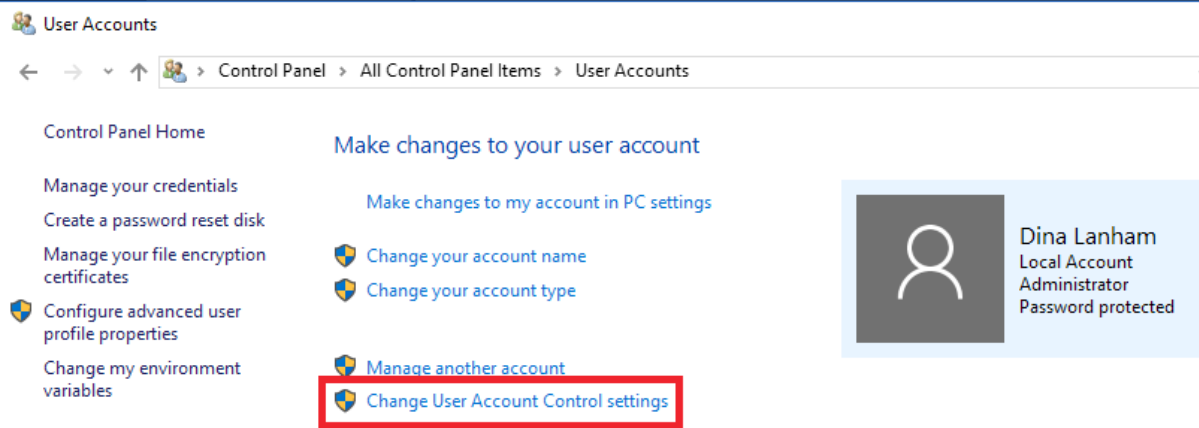
Select 'User Accounts'

View by: **Small icons** ▼

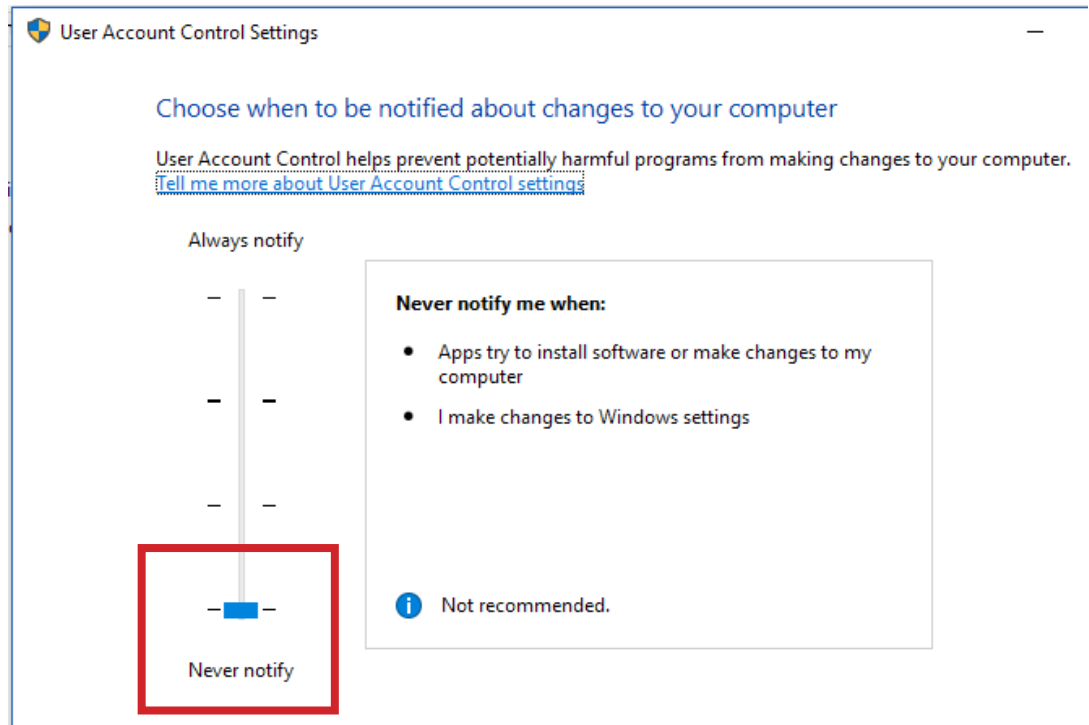


XITRON, LLC
4880 VENTURE DRIVE
SUITE 500
ANN ARBOR, MI 48108
WWW.XITRON.COM

Click 'Change User Account Control settings'



Slide the bar down to 'Never notify'



Click 'OK' and close the window



XITRON, LLC
4880 VENTURE DRIVE
SUITE 500
ANN ARBOR, MI 48108
WWW.XITRON.COM