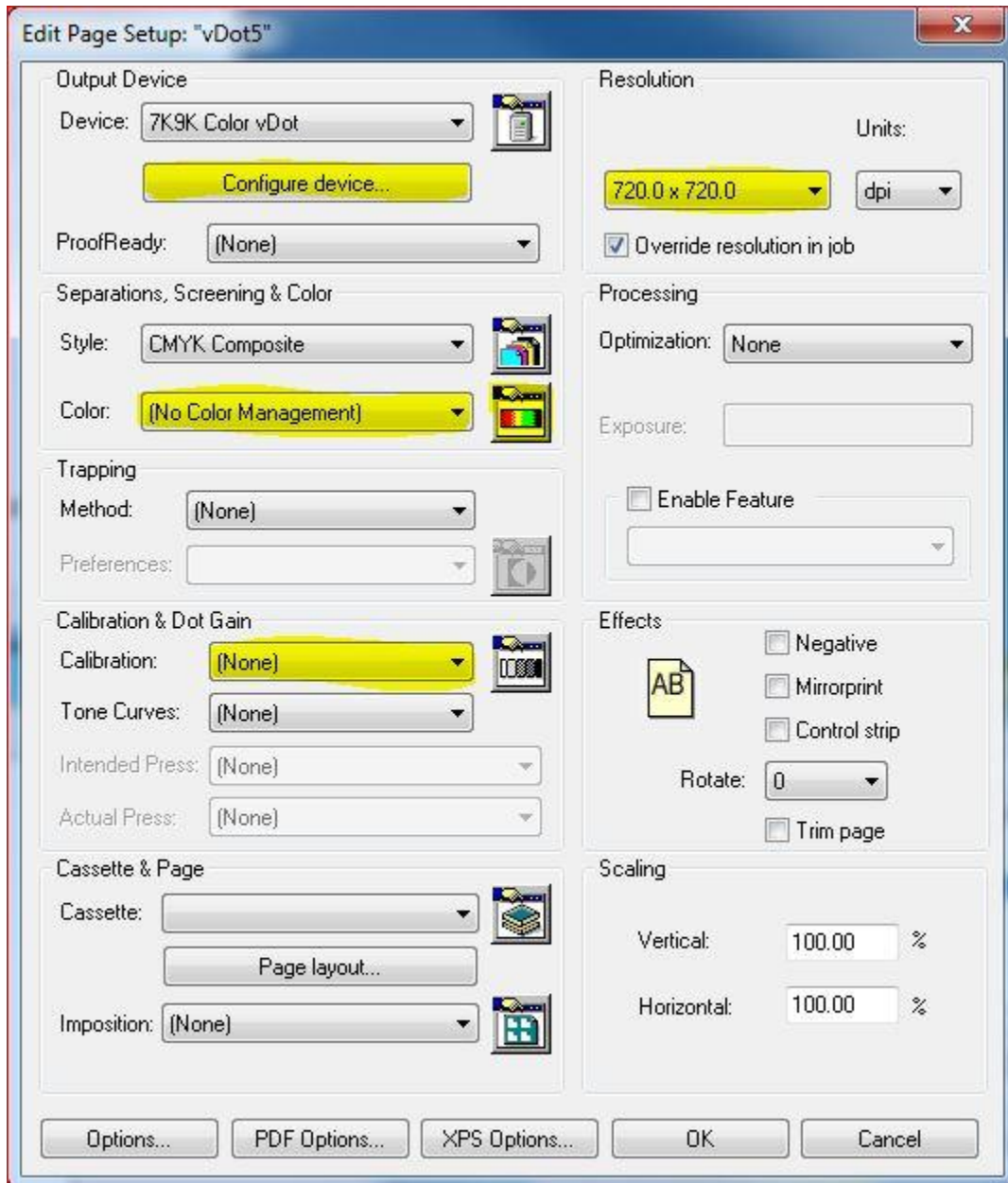


March 16, 2017.

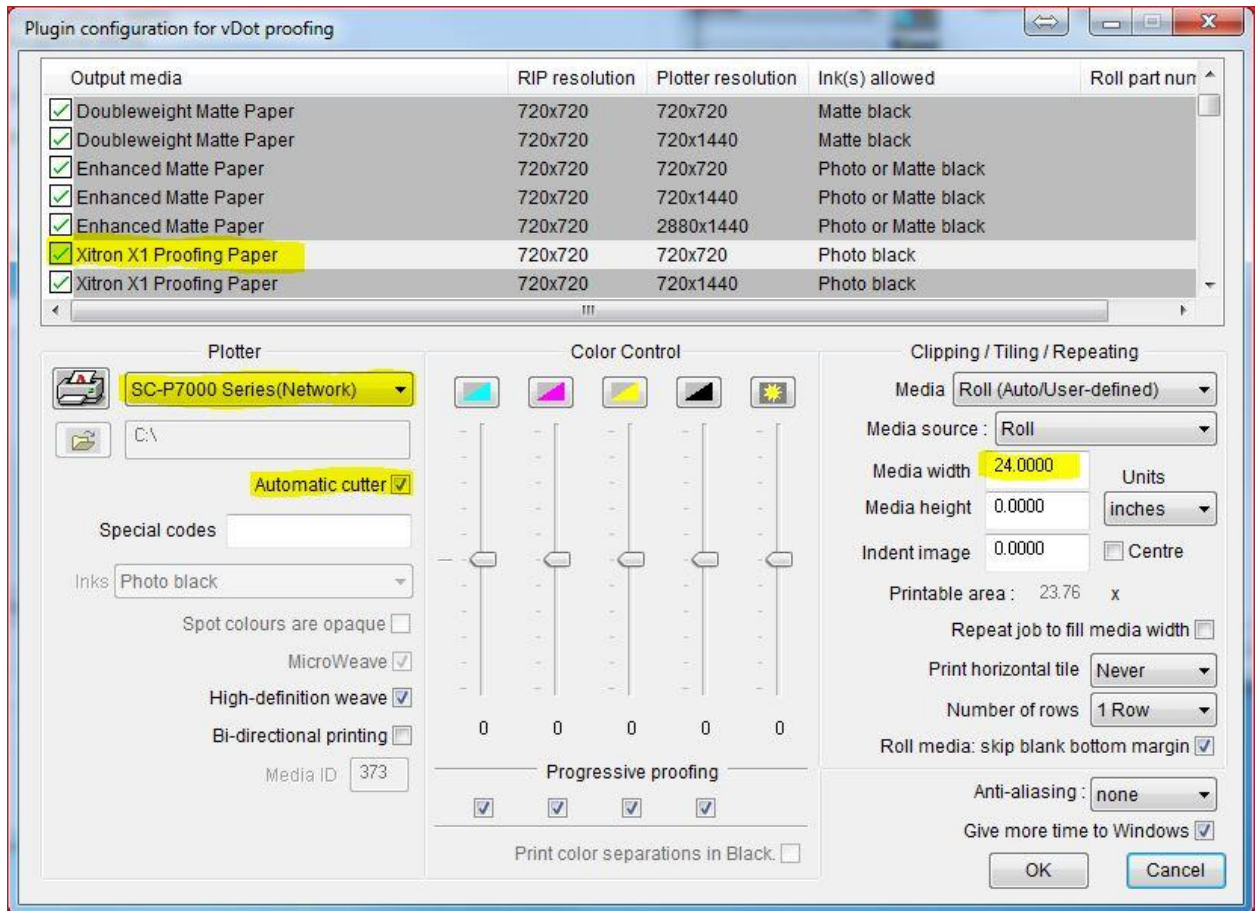
Xitron.

Proper ColorPro Settings for Epson vDot 5:

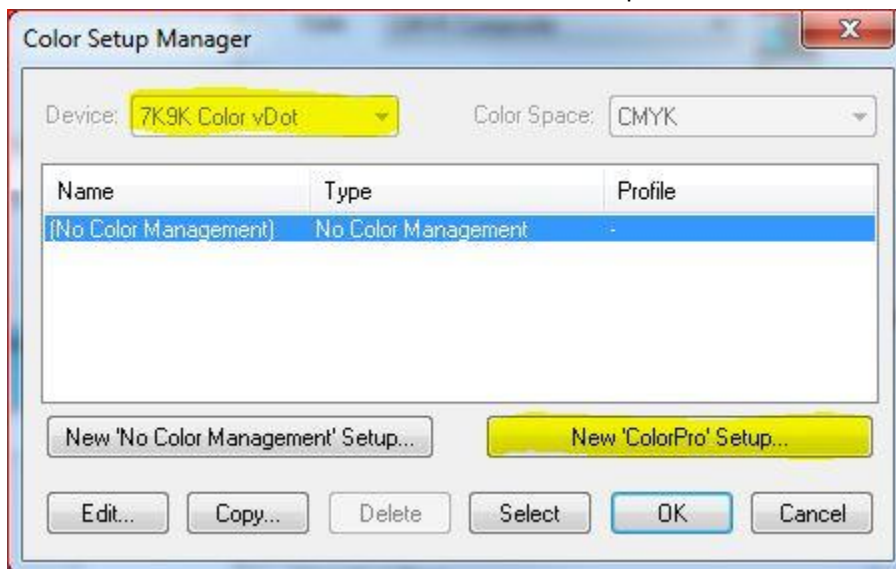
1. Open the Navigator RIP and create a Page Setup as follows.



2. In the Configure Device button, select the Stock, Plotter, Automatic Cutter, and Media Width.



3. Now click on the Icon next to Color (Separations, Screening & Color), to create a new ColorPro. Select the Device and then click New 'ColorPro' Setup...



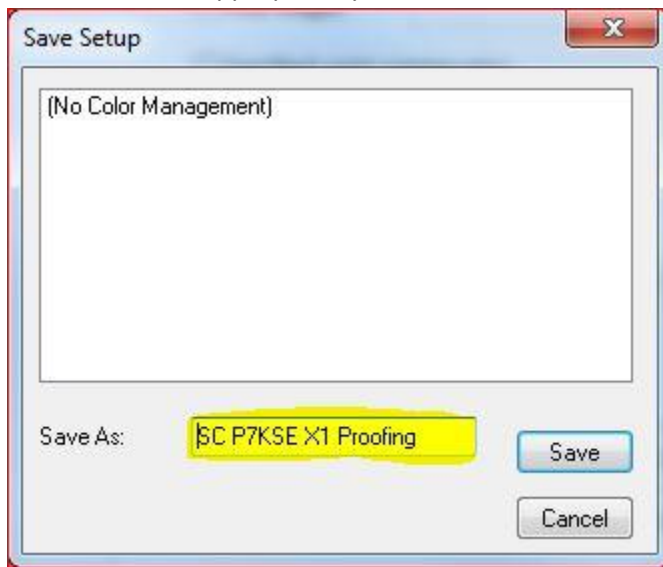
4. Configure as below.

The screenshot shows the 'New Color Setup: ColorPro' dialog box. At the top is a color bar. The settings are organized into several sections:

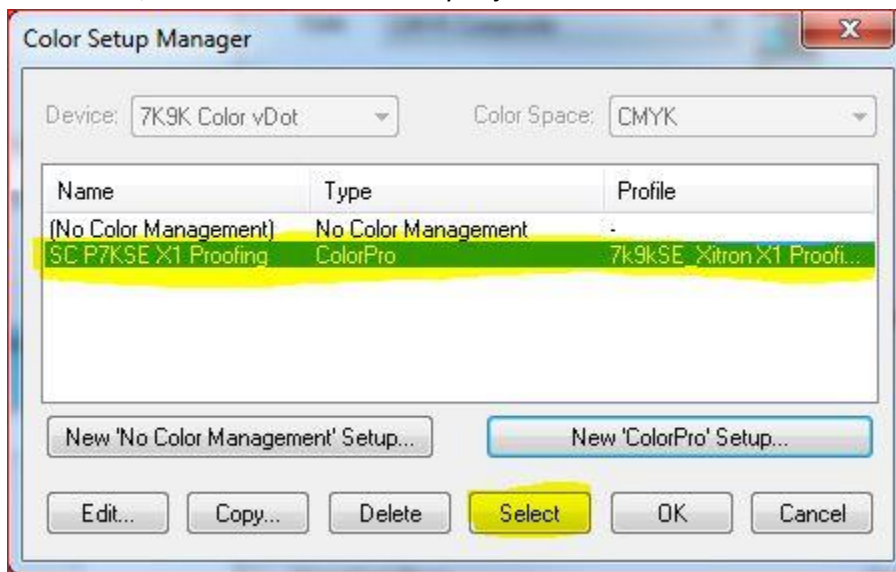
- Input Profiles:**
 - CMYK data: GRACol (CGATS TR006)
 - RGB data: sRGB
 - ☒ Color manage gray as CMYK
 - Gray data: (None)
 - ☐ Treat spot colors as CMYK
- Input Document Controls:**
 - ☒ Override color management in job
 - ☐ Simulate paper color of job
 - ☐ Preserve 100% process black
 - ☐ Override overprint mode in job
 - ☒ Overprint process colors
 - ☐ Drop white objects
 - ☐ Overprint grays
 - ☒ Overprint gray images
 - ☐ Overprint 100% black
 - ☒ Overprint preview
- Input Separation Detection Angles in Job:**
 - ☐ Detect input separations by screen angle
 - Cyan: []
 - Magenta: []
 - Yellow: []
 - Black: []
- Output Profile:**
 - 7k9kSE_Xitron X1 Proofing_720.icm
 - Info...
- Output Emulation:**
 - (None)
 - Info...
- Output Rendering Intents:**
 - Main intent: (->ICC colorimetric)
 - ☐ CMYK images:
 - ☐ RGB images:
 - ☐ Use black point compensation
- Output Controls for RGB:**
 - Black generation: None
 - ☐ Override black generation in job
 - Max ink: 300 % Max black: 100 %
 - ☐ Convert RGB black to true black
- Output Controls:**
 - Lighting: Graphic Arts D50
 - Color adjustments: Accurate

Buttons at the bottom: Save As..., Cancel.

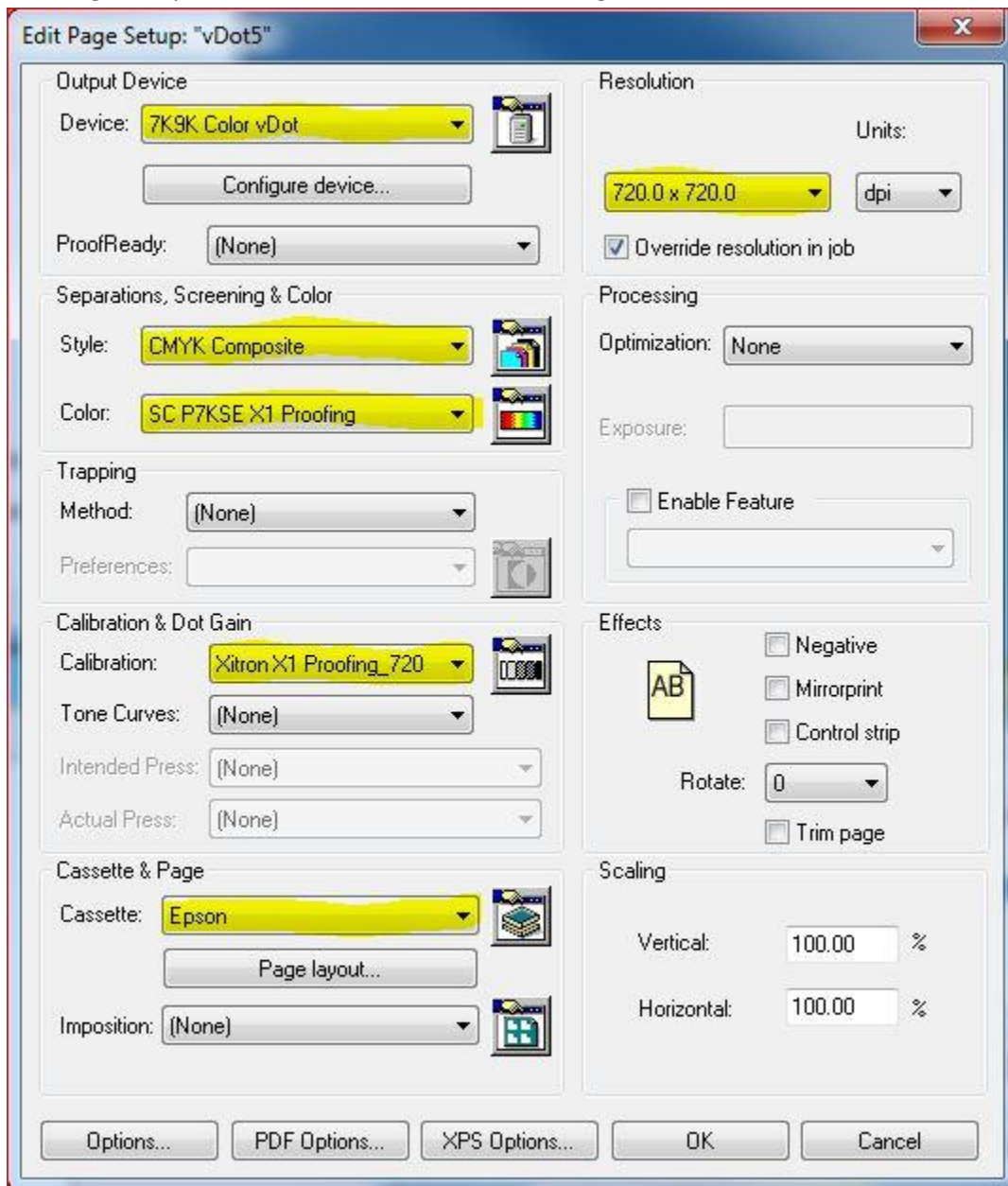
5. Save as... Name appropriately.



6. Once saved, select the ColorPro that you just created and click on the Select button.

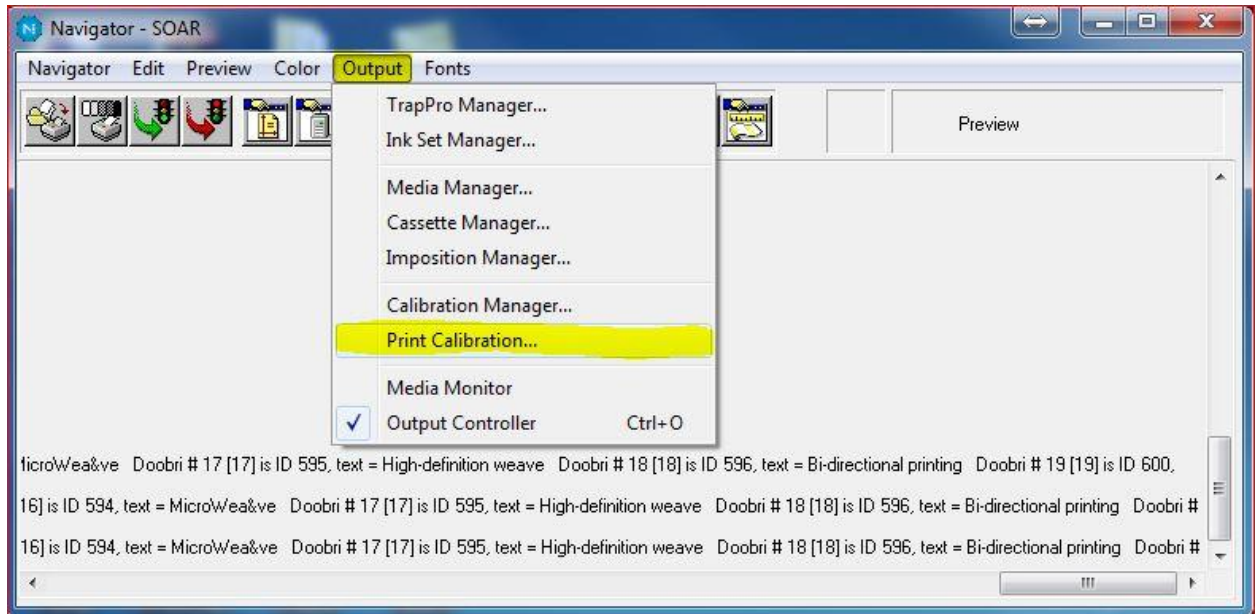


7. Your Page Setup will now look similar to the following Screen shot.

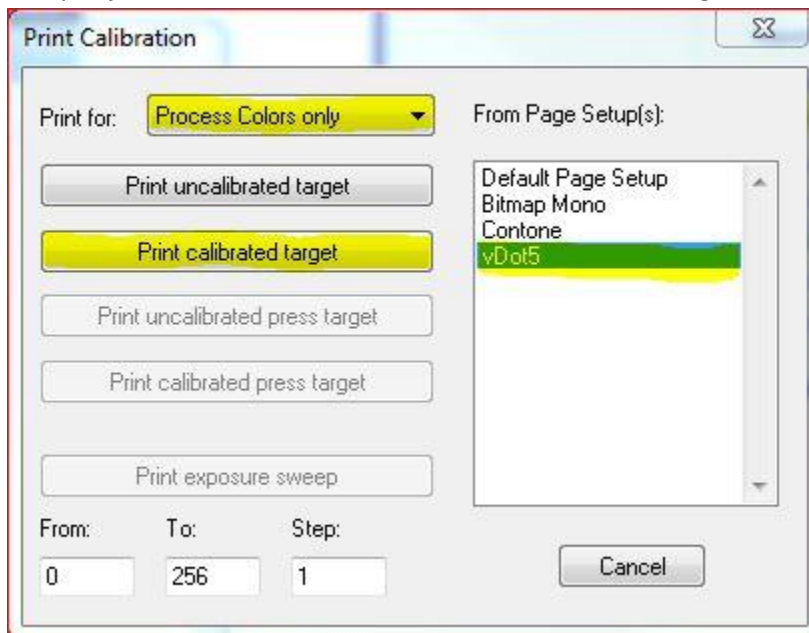


You now have a correctly configured RIP. If you wish to calibrate your Epson so that it prints like the reference printer with which the color profiles in our RIP was created, carry on to step 8. If you are working with Xitron Support on a calibration/verification by mail and simply wanted to verify that your RIP was configured correctly, you can stop here and continue with the [verification/calibration procedure](#) detailed online.

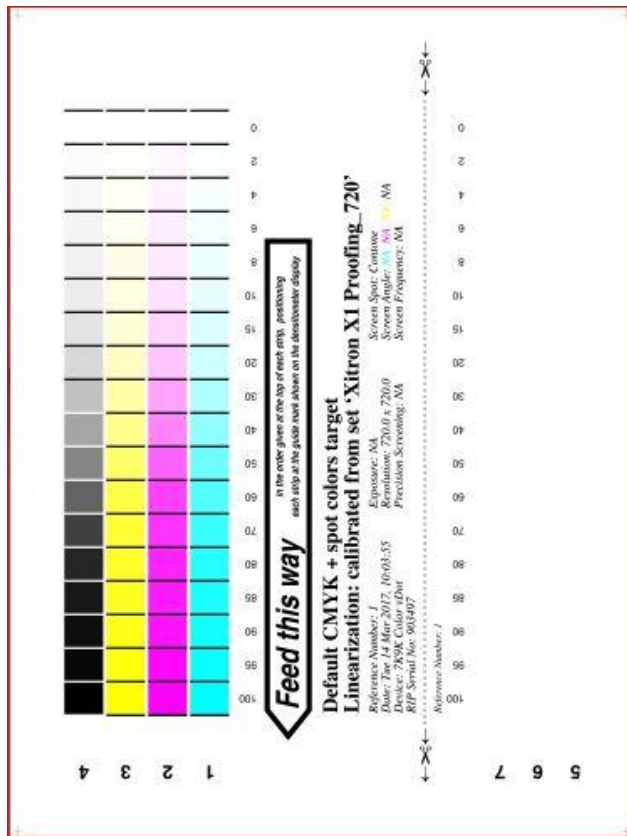
8. Now that you have the Page Setup created, you will now Print the Calibration. From the Output menu Select Print Calibration.



9. The Print calibration window will open. Select Process Colors Only, select the vDot 5 Page Setup that you just created, and then click on Print calibrated target.

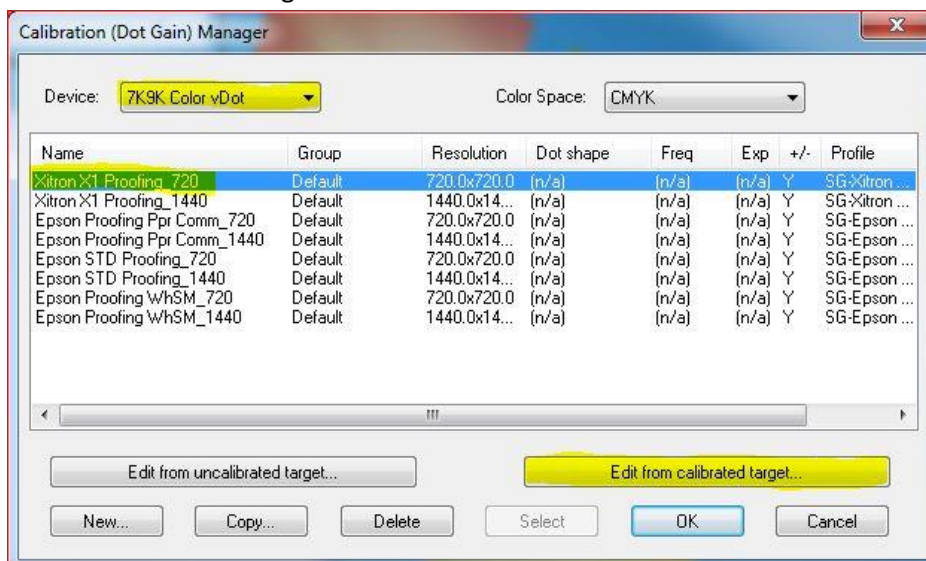


10. The Epson will output the following chart.



11. Once the Chart is finished printing on the Epson, use the Spectrophotometer to read the Status-T each swatch. Either use the GenLin utility or simply write down the results.

12. You will now edit the Calibration file you used in the Page Setup. Open the Page Setup and Select then Icon next to Calibration (Calibration & Dot Gain). Select the Calibration and click on Edit from calibrated target...



13. The Calibration will open. Make sure that it has the correct Profile, Resolution, and Name. Make sure 'Measurements as' is set to Status-T (X-Rite). Now either input the measurements from the chart for each color or (if you used the GenLin utility) click "Import" and choose your readings. When done click 'OK.'

Warning / Selection Criteria

Profile: SG-XitronX1 Proofing_720

☒ Resolution: 720.0 x 720.0 dpi

☐ Dot shape: [dropdown]

☐ Screen freq: [dropdown] [dropdown]

☐ Exposure: [dropdown] ☒ Use for Pos & Neg

Name: XitronX1 Proofing_720

Group: Default

Measurements as: Status T (X-Rite)

Channel: Cyan (dropdown menu open showing Cyan, Magenta, Yellow, Black)

☐ Negative

☐ Force solid colors

C100	C95	C90	C85	C80	C70	C60	C50	C40	C30	C20	C15
2.148	2.023	1.843	1.654	1.446	1.117	0.841	0.633	0.454	0.319	0.206	0.163
C10	C8	C6	C4	C2	C0						
0.122	0.104	0.086	0.071	0.058	0.043						

Smooth Extrapolate Clear Reset Import

Bump-up Curve

☐ Apply bump-up curve

Zero output below: [input] %

Minimum non-zero output: [input] %

No bump-up above: [input] %

OK Cancel

14. This will take you back to the Page Setup window. Now Click 'OK' to save and close the Page Setup.