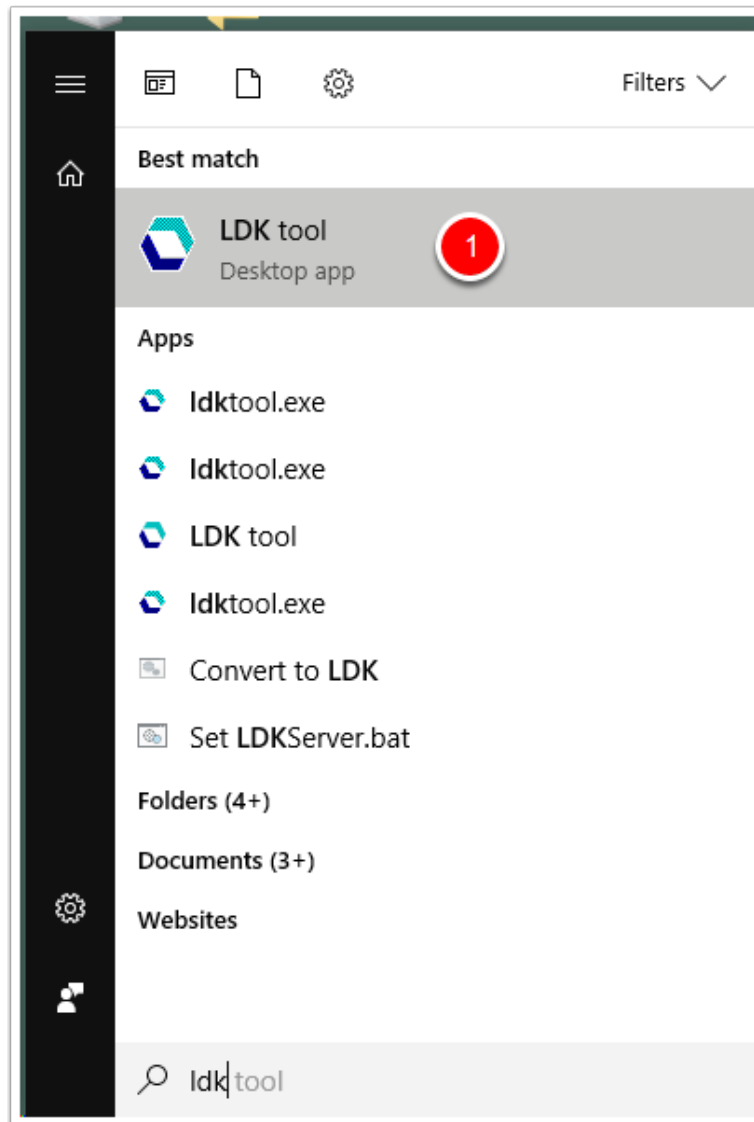


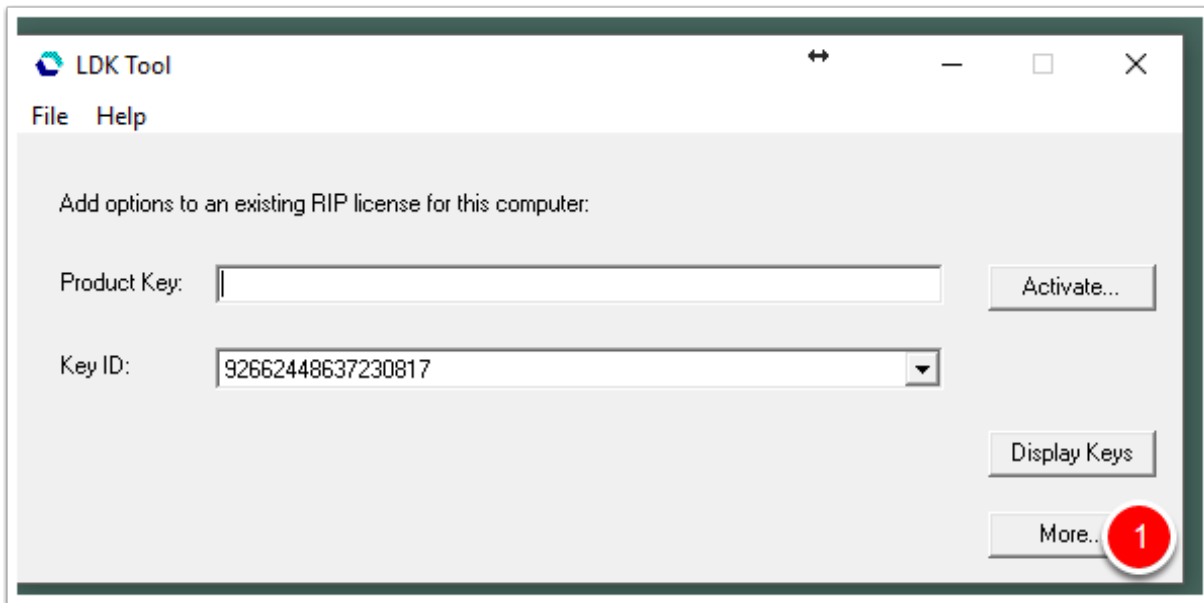
Insert the USB Key and start the LDK tool

1. Insert the USB Key (Dongle) into a USB port on the PC. Make sure no other keys are connected before attempting programming.
2. Launch the LDK Tool by searching "LDK tool" from the start menu.



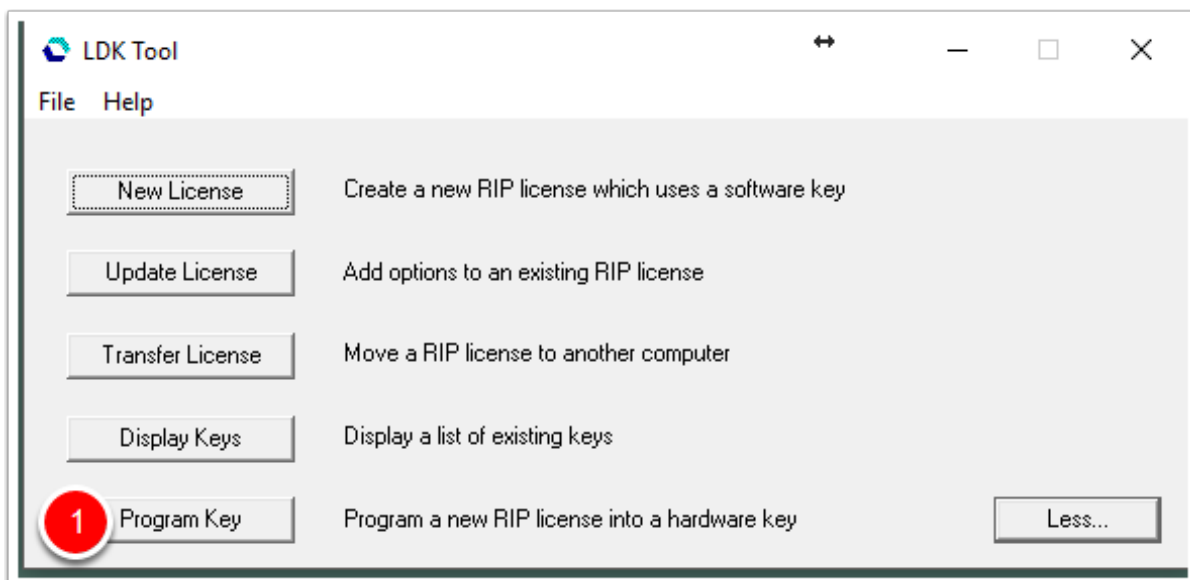
Access additional functions

1. Click the "More" button to access additional functions.



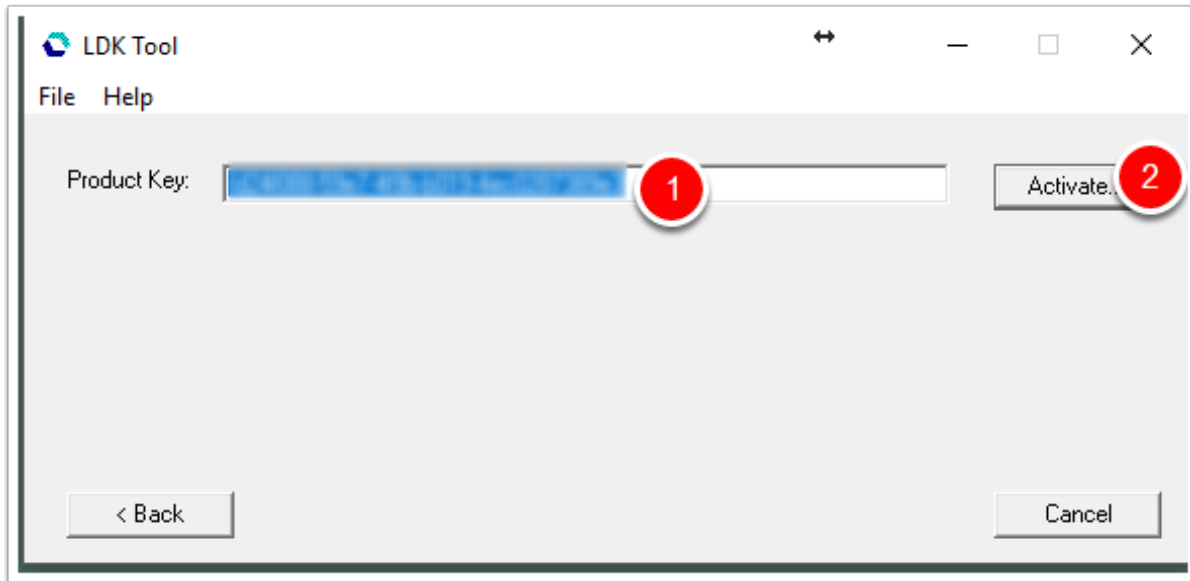
Program a Key

1. Click "Program Key"



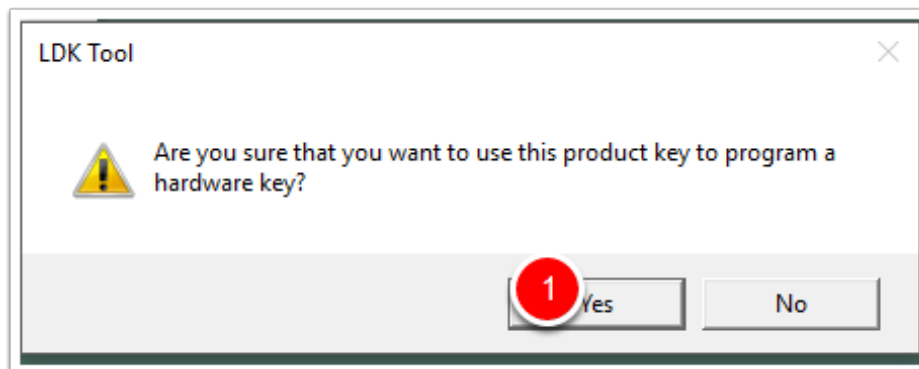
Enter product key

1. Enter the product key in the "Product Key" text field.
2. Click Activate



Confirm activation

1. Click "Yes"



Activation Complete

If the activation was successful, you will receive a confirmation as shown.

