

# XiSCSI KMDF SPTI Installation

March 6, 2017

## Overview

XiSCSI is a Windows kernel mode driver that supports the Windows SCSI pass through interface (SPTI). This driver is supported on Windows 7 SP1+ and Windows 10, 64-bit versions only. There are two driver installs, one for Windows 7 and one for Windows 10. The only difference is in how they are signed.

## Quick Start

1. In the folder that reflects the Windows version you are installing on, run 'Install.bat'.
2. Plug in the Xitron USB Blue Box.
3. Weep for joy.

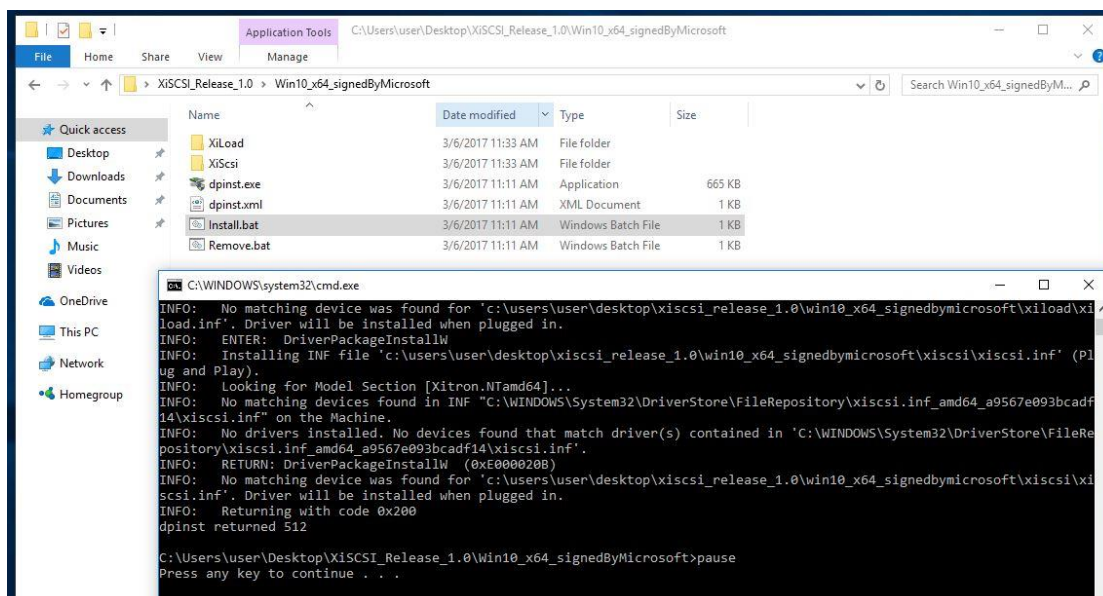
## More Details

### Installation

#### Running install.bat

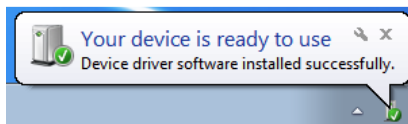
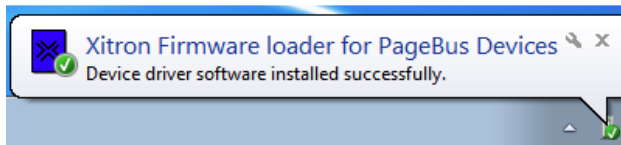
Run Install.bat. This script copies the driver, its files and its supporting files into what's known as the Driver Store in Windows. When the Xitron USB Blue Box cable is plugged into a USB port on the computer, Windows completed the installation of the actual driver and starts it. *Every time you attach the Xitron USB Blue Box to a different USB port this second step, the installation of the drivers (from the Driver Store), takes place.*

On Windows 7 you will get a prompt confirming that you are willing to allow drivers from Vanguard Graphics LLC (Xitron's parent company) to be installed. On Windows 10 you will not see this prompt. The results will look like the Dos window below.

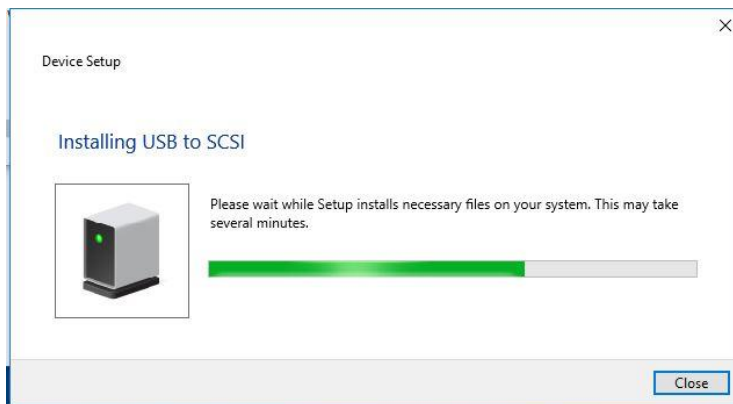


### Plug in the USB Blue Box

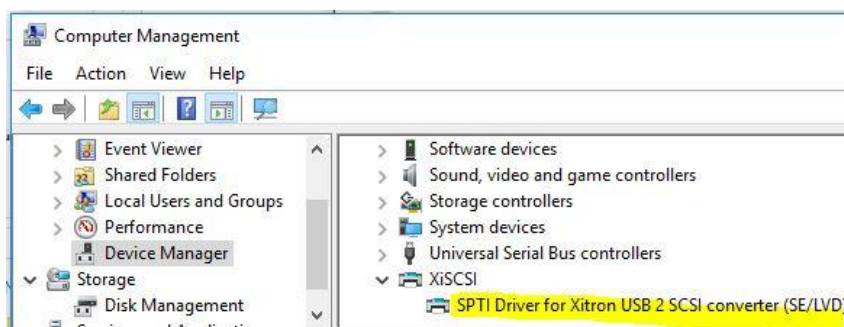
Attach the USB Blue Box. On Windows 7 you'll see the notifications (similar to those below) in the tray area that the device has been discovered and the drivers installed.



On Windows 10 the messages are quieter. If you are quick you will notice a dialog popup for a few seconds explaining that the driver is being installed.

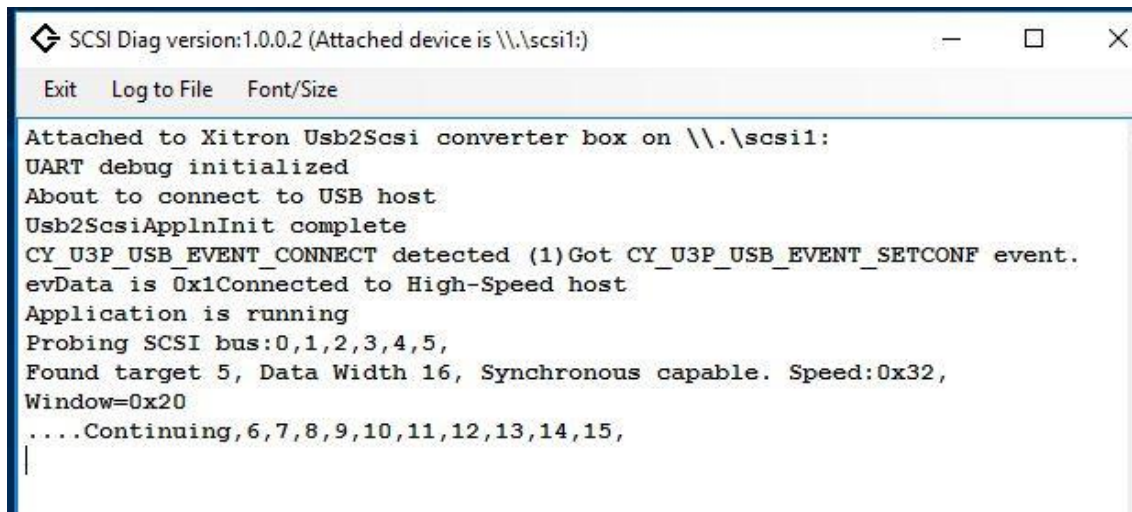


You can check Device Manager for confirmation that the drivers are installed correctly once the box is plugged in.



### Double check with SCSIdiag

Start SCSIdiag.exe and confirm that it can talk, through the new drivers, to USB Blue Box. If there is a SCSI device connected, it should detect it.



The screenshot shows a window titled "SCSI Diag version:1.0.0.2 (Attached device is \\.\scsi1:)" with a menu bar containing "Exit", "Log to File", and "Font/Size". The main text area displays the following log output:

```
Attached to Xitron Usb2Scsi converter box on \\.\scsi1:
UART debug initialized
About to connect to USB host
Usb2ScsiApplnInit complete
CY_U3P_USB_EVENT_CONNECT detected (1)Got CY_U3P_USB_EVENT_SETCONF event.
evData is 0x1Connected to High-Speed host
Application is running
Probing SCSI bus:0,1,2,3,4,5,
Found target 5, Data Width 16, Synchronous capable. Speed:0x32,
Window=0x20
....Continuing,6,7,8,9,10,11,12,13,14,15,
|
```

## And More Details

The firmware is delivered in files known as 'scripts' (.spt). Their names have the form XiUsb\_<device\_name>.spt.

This installation package is digitally signed using a signing certificate from VeriSign. This means that Windows can confirm that the contents have not been altered. This is a requirement in the 64-bit versions of Windows. You should not get the red box that says "Windows can't verify the publisher of this driver software".

This set of drivers works on both 64-bit Windows (x64) and 32-bit Windows (x86). Supported operating systems are Windows Server 2008 R2 (x64) and above, and Windows 7 Professional both 32 and 64-bit, and Windows 10 64-bit. **Window 8 and 8.1 are not supported, and Windows 10 32-bit is not supported.**

The file versions of importance, or that may change, are:

File	Version
Xdll (non-SCSI)	10.0.0.1
Xdll (Usb2Scsi)	10.2.0.0
PB2Diag.exe	10.2.0.0
XiUsb.inf	3.0
XiLoad.sys	3.4.4.0
XiUsb.dll	1.0.3.6
XiUsbClassInst.dll	1.0.1.1