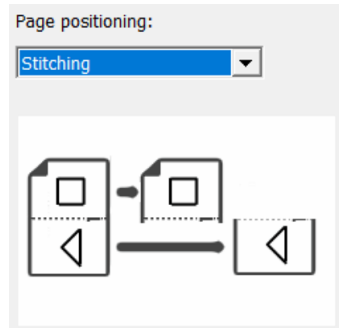


DuraLink R3.1 Cheat Sheet

v2.0 3rd November 2021

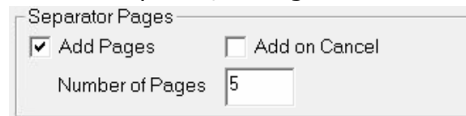
Swap between stitching and transactional systems

Server, Manage Workflow Actions..., Page Filter Action, Configure
Select Stitching, Slit and Merge, or Multi Stream.



Add blank separator pages between jobs

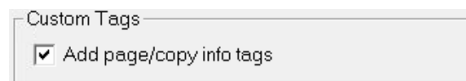
DuraLink Spooler, Configure...



Add custom tags with copy and page numbers

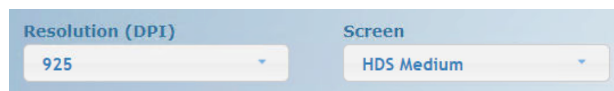
DuraLink Spooler, Configure...

These will be displayed by the PCS as the job is printed.



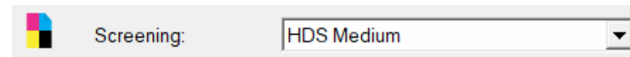
Set base screen pattern and resolution

Launch Navigator Configurations Editor via 'NCE' shortcut
in User Resources\Xitron Shortcuts
Select on DuraLink tab:



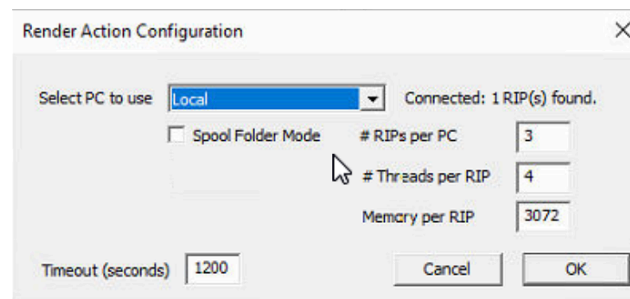
Override screen pattern

Navigator Client, Enter Workflow Editor, Render Action



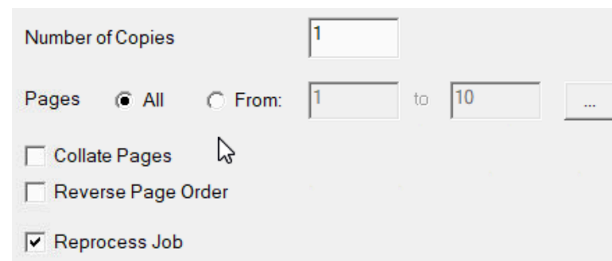
Configure RIP farm

Navigator Server, Server Setup → Manage Workflow Actions...
Render Action, Configure...



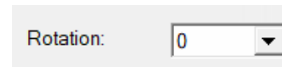
Set job options: page range, multiple copies, collate

Navigator Client, right-click job. Output Options...



Set job rotation before splitting

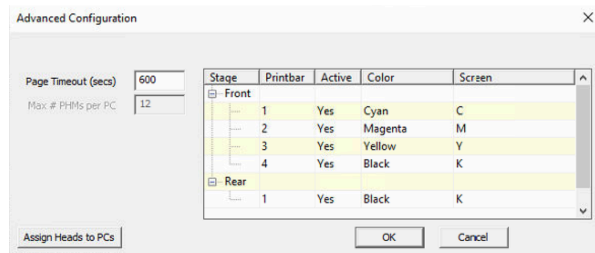
Navigator Client, Enter Workflow Editor, Page Filter Action



Assign screen patterns to printbars

Server, Server Setup→Manage Devices...

Double-click DuraLnk v2 device name, Advanced...



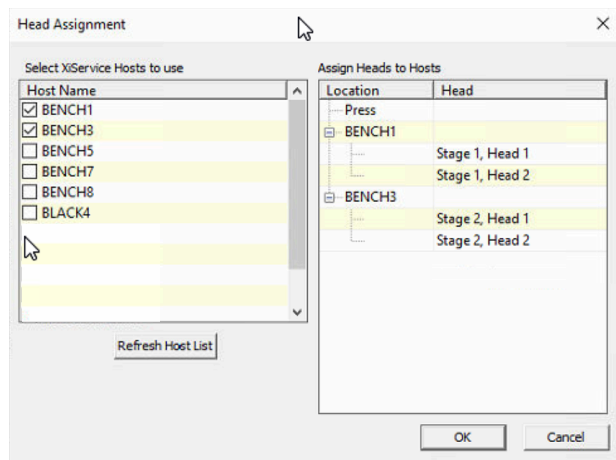
Double-click in Screen column to show screen selector.

Head Assignment Tool

Server, Server Setup→Manage Devices...

Double-click DuraLink v2 device name, Advanced...

Assign Heads to PCs



Check the RIP Host PCs to use in the left column.

Drag Heads from the Press section to the PC you wish to RIP for that head.

The order of heads within a PC list does not matter.